

Good News

Parish Magazine

High Downs Parish

Serving the villages of Eastling, Otterden,
Stalisfield and Throwley

www.goodnews.rf.gd



The harvest produce was taken to the old
people's bungalows

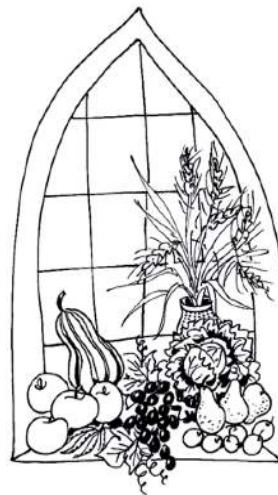


OCTOBER 2022

- 2nd HARVEST FESTIVAL
Eastling Church 10.30am
- 2nd THROWLEY HARVEST LUNCH
Badlesmere Village Hall 12.30pm
- 5th Otterden & Stalisfield W.I.
Stalisfield Village Hall 7.30pm
- 8th Social Event
Throwley Church 5 - 7pm
- 8th HARVEST SUPPER
Stalisfield Village Hall 7pm
- 9th HARVEST FESTIVAL
Stalisfield Church 10.30am
- 12th Arts Society lecture, Egerton
Millennium Hall, Egerton 2.30pm
- 12th Stalisfield Youth
Stalisfield Village Hall 7 - 8.30pm
- 13th Happy Times Singing
Newnham Village Hall 2 - 3pm
- 13th Local History Society
Charing Parish Hall 8pm
- 14th Eat, Pray, Walk
Doddington Church 1.30pm
- 20th Copy Deadline for November G.News
goodnewsmagazine@me.com
- 27th Arts Society lecture
Alexander Centre, Faversham 11am

NOVEMBER

- 2nd Otterden & Stalisfield W.I.
Stalisfield Village Hall 7.30pm
- 9th Stalisfield Youth - *Glo Night Neon Disco*
Stalisfield Village Hall 7 - 8.30pm
- 13th Remembrance Service
Throwley Church 10.30am



HARVEST FESTIVALS

in our Churches

Eastling 2nd October 10.30am

Stalisfield 9th October 10.30am

Harvest Supper Stalisfield Village Hall

Saturday 8th October at 7pm

Adults £8 Children £5

Please book your place either
ring or message

Shirley 0788 5827 444



COME & JOIN US ON OCTOBER 2ND AT 12.30 PM

THROWLEY HARVEST LUNCH

& RAFFLE AT

BADLESMERE VILLAGE HALL

TICKETS £12 EACH (FREE TO UNDER 10s) & ALLOCATED ON
A FIRST COME FIRST SERVED BASIS. PLEASE BOOK IN ADVANCE
BY CONTACTING sarahjanetormey1@gmail.com INDICATING
YOUR MAIN COURSE CHOICE: COLD ROAST GAMMON,
CHICKEN CASSEROLE OR VEGETARIAN QUICHE

Message for October

The last piece that I wrote was for the June newsletter when the country was celebrating the Queen's platinum jubilee, and now I find myself sitting down to write in the aftermath of her death. I'm so glad to have been able to celebrate those 70 years of service and have the joyful memories of the Queen taking tea with Paddington!

I wonder what you are feeling and what have been your reactions over the last little while? The evening that the announcement of the Queen's death came through I was heading to a celebration of the 10th birthday of one of my choirs. Too late to cancel, those of us who gathered did so with a whole mixture of feelings, many taken by surprise by the strength of their reactions. We concluded that whatever we were feeling was okay – feelings are there to be taken notice of, and to give us cause to reflect on where they might stem from. A friend at that event remarked that in the current climate of underlying anxiety about the rising cost of living, the war in Ukraine, the

environmental crisis, and the long shadow of covid; the Queen's steady presence has brought a comforting reassurance of stability whose absence may now only add to the anxieties.

The Queen had a profound Christian faith which she expressed quietly but increasingly overtly over the years, and I too have found that the gift of faith is a real life-line when anxieties insidiously creep in. When the stabilities in which we put our trust – our health, our jobs, pension plans, our relationships seem to falter; when the world seems to be changing around us and the certainties we used to have don't seem so certain any more; when the comfortable future that we planned seems to be slipping through our fingers and we find ourselves wrong-footed and bewildered; the gift of faith is a real possession. We may feel lost and abandoned, but God promises never to abandon us. The Quaker Job Scott (1751-1793) wrote *'Our strength or help is only in God; but then it is near us, it*

is in us – a force superior to all possible opposition – a force that never was, nor can be foiled' and from the bible, the apostle Paul wrote *'I'd say you'll do best by filling your minds and meditating on things true, noble, reputable, authentic, compelling, gracious—the best, not the worst; the beautiful, not the ugly; things to praise, not things to curse. Put into practice what you learned from me, what you heard and saw and realized. Do that, and God, who makes everything work together, will work you into his most excellent harmonies.'*

With love, light and the blessings of Christ
Lissie Bayford

Dorothy Murray

Sadly Dorothy died on 14th October 2022. For those of us who knew her, Dorothy was an amazingly caring and sociable person and the Good News is grateful for her contributions in previous years for the old photos and stories of local villages. May she rest in peace.

Prayer Pointers

October 2022

- Mondays** - Give thanks for King Charles and pray for God's blessing to be upon him and members of the royal family, in their new roles.
- Tuesdays** - Give thanks for our emergency services and pray for all working within them.
- Wednesdays** - Pray for those living in fear of persecution in this country and abroad.
- Thursdays** - Give thanks for the freedom to join together to worship the one true God.
- Fridays** - Pray for all who mourn, especially those now living on their own.
- Saturdays** - Pray for those living in war torn areas of our world.
- Sundays** - Give thanks for the life and work of our late Queen Elizabeth, may she rest in peace.



Eastling Church Flower Rota October 2022



- 2nd October - HARVEST
- everyone please.
- 9th Harvest flowers
16th & 23rd - Steph
30th & 6th Nov - Di
- If you would like to join the flower arranging rota, please call Bay on 01795 892036.



Help feed local people in crisis

Faversham Foodbank

The local Foodbank has helped so many people through the years and is needed even more as food and energy prices increase.

Can you help? By giving food, donating money or by helping at the centre in Tanners Street.

Go to <https://faversham.foodbank.org.uk> for more information.

Donations of food can be left on the back pew in Eastling Church.



News from Citizens Advice Swale Sept 2022

citizens advice

Since returning to face to face work in our Faversham office, at 43 Stone Street, we've been able to offer increased support to the most vulnerable clients in our community.

This has been not only beneficial to clients but extremely rewarding for volunteers, and something we really missed during lockdown.

Our Friday sessions are becoming increasingly busy and we envisage an increase in demand for debt advice due to the cost of living crisis.

Until recently we offered booked appointments for debt on either Mondays or Tuesdays, and booked appointments for general advice on a Friday. We're delighted to announce that a drop-in service is now open on Fridays 10am-12pm in addition to the appointments.

Follow us on social media for more information on opening times and additional services:

www.facebook.com/CitizensAdviceSwale

www.twitter.com/cabinswale

Prayer for October 2022

By Daphne Kitching

Loving, Creator God,
Thank you for your wonderful creation. In these days of concern about climate change and the damage caused by modern lifestyles and choices, help us to be more aware. Help us to make good choices. Help us to be good stewards of Your creation.

You are so generous Lord. You provide for us – more than enough to meet the needs of all people. Help us to play our part in making sure there is fair distribution of all Your provision. Help us to reflect Your generosity, Your compassion, Your justice. Help us to care for Your world and Your precious children.

In Jesus name, Amen



www.roots.uk

We specialise in the **design, supply and installation** of complete **kitchens, bedrooms and bathrooms**. Our **fully managed service** includes all skilled trades right through to final decorating. Discover more at www.roots.uk and visit our showroom. Roots. For your forever home.

Showroom open Mon-Sat 9am-5pm 01227 751130
Vine Farm, Boughton-under-Blean, Faversham, ME13 9AB

Wild Thyme Catering Services

Organising a Christmas party?
Need catered canapes for a crowd?
Want help stocking the freezer for weekend guests?
Arranging a children's birthday party?

Delicious home cooked food to order
For all your catering needs: Phone Anna Blunt 07817 872497
Email: annabluntathome@gmail.com



Bespoke Later Life Support

Website: www.nplh.uk

Email: info@nplh.uk

01795 597983

Exceptional quality
companionship
and care at home



Local area service
Personalised approach
Dementia expertise
Professionally trained

RELIABLE & PROFESSIONAL SERVICE AT REALISTIC PRICES BY CERTIFIED ENGINEERS
WE COME TO YOU!

JKF Computer Services, Est 2000

- PC Repairs, Upgrades & Rebuilds
- Virus Detection and Removal
- PC's Built To Your Specification
- On- Site or Workshop Repairs
- Hardware & Software Troubleshooting
- Computer Installation & Maintenance
- Spyware Detection & Removal
- Collect and Return Service as needed
- Data Recovery and Backup
- Small Business or Home Networks

CALL US ON 01795 531623 or 01227 290131 / Mobile 07880 602823



Eastling Christmas Choir

In preparation for our Christmas Eve Carol Service, choir practices will be on Sunday evenings, 5 - 6pm on 20th November. All voice parts welcome.

Andrew Baxter 01795 890598

'Happy times with old songs, tea & chatter'



Come and join us in singing for fun on Thursday afternoons: 13th October, 10th November, 8th December from 2pm - 3pm at Newnham Village Hall £5 per person pay-as-you-go

Enquiries to Lissie on 07790 287878 or email lissiebayford@gmail.com

These are particularly aimed at our elderly folk and suitable for people with early-stage dementia.

A SOCIAL EVENT ON 8TH OCTOBER 5-7 PM

INVITATION

TO THE

FRIENDS OF THROWLEY CHURCH

& ALSO TO ALL THOSE CURIOUS IN THE HISTORY OF THROWLEY CHURCH

TO SHOW WORK RECENTLY COMPLETED TO THE SONDES CARTOUCHE & HARRIS WINDOWS ACCOMPANIED BY TALKS FROM JOHN OWEN & JOHN SELL

WINE & NIBBLES



Throwley Church Choir: looking for additional singers

The Choir of St Michael and All Angels, Throwley, has been singing Church services every second and fourth Sundays for about 4 years and we are proud of the fact that a small

group of us managed to sing services during most of lockdown once we were allowed to reopen the Church.

We are happy to accommodate all voices, though some additional male voices would be most welcome. The ability to read music whilst useful is not absolutely essential. We always aim to enjoy singing together.

We sing the hymns (usually with one or two verses unaccompanied in harmony), with an anthem (covering a wide variety of music, modern and old) as well as leading the singing of other items of liturgy for communion and morning prayers. We sing at the annual Remembrance Service and will be taking part in this year's Carol Service in Throwley on 21st December.

Please get in touch if you are interested in joining us: email David Elvin at davidjelvin@gmail.com

Buddies is our Parent and Toddler group

that runs in Doddington Village Hall. We're open every Friday during term time from 9.00 - 11.00am. We'd love to share this wonderful meeting place with more families across the Benefice, but need your help. If you feel you could give some time to baking a cake, being there to serve teas and coffees, supplying snacks for the little ones, reading a story or singing songs, we'd love to hear from you. This is a great

opportunity to show who we are as 'church' and share God's love in our community.

Please contact caroline.turvey@kc-hd.org.uk if you'd like to join our team, either regularly, or on an ad hoc basis. The more the merrier!

EASTLING VILLAGE HALL

To book ring Annie on 07754 114670

Email: Jacksonandadams@btopenworld.com

www.eastlingvillagehall.co.uk

A beautiful hall in a lovely village location for your wedding, club, sports or meetings.

The large hall has pretty grounds, car parking, meeting rooms and fully equipped facilities for professional or self-catering occasions.



Stalisfield Highlife

Stalisfield Village Hall

2022

9th & 10th Dec Pantomime: 7pm

17th Dec Children's Christmas Party

18th Dec Seniors' Christmas Party

Buddies

For pre-school children and their adults



Doddington Village Hall 9.00am-11.00am during term time only

Now on Fridays

Sunday Services

2nd October Trinity 16

Philippians 4. 4 - 9. John 6. 25 - 35

Eastling 10.30am HARVEST FESTIVAL

9th October Trinity 17

2 Timothy 2. 8 - 15, Luke 17. 11 - 19

Eastling 9am Holy Communion BCP
Stalisfield 10.30am HARVEST FESTIVAL
Throwley 10.30am Morning Prayer
Lynsted 10.30am All Together Now

16th October Trinity 18

2 Timothy 3. 14 - 4. 5, Luke 18. 1 - 8

Newnham 9am Holy Communion BCP
Eastling 10.30am Morning Worship

23rd October Bible Sunday

2 Timothy 4. 6 - 8, 16 - 18, Luke 18. 9 - 14

Throwley 10.30am Holy Communion
Norton 10.30am Morning Worship

30th October All Saints Day

Ephesians 1. 11 - 23, Luke 6. 20 - 31

Newnham 10.30am Benefice Communion

6th November Third before Advent

2 Thessalonians 2. 1 - 5, 13 - 17, Luke 20. 27 - 38

Eastling 10.30am Holy Communion
Norton 10.30am Morning Worship

Online Daily Worship Continues

As well as the services in our churches, the daily 9am Morning Prayer at Lynsted and Sunday Breakthrough at 6pm, will continue and be live online on <https://kc-hd.org.uk>.

More information is updated weekly on St Mary's Eastling 'A Church Near You':

<https://www.achurchnearyou.com/church/11982/>

Starting at Doddington Church Car Park
Time spent with others in the fresh air, over
a cuppa and in prayer
ALL WELCOME

Friday 12th August
9th September
14th October
1.30 to 3.00pm

Eat Pray Walk

Celebrating God in creation

High Downs Parish

Rector Reverend Canon Dr. Steve Lillicrap
01795 522510 steve.lillicrap@kc-hd.org.uk

Associate Priest Reverend James (Jim) Pye
01795 890726 jim.pye@kc-hd.org.uk

Curate Reverend Caroline Turvey
01795 886351 caroline.turvey@kc-hd.org.uk

Reader Caroline Ramshaw (07799 538809)

Anna Chaplain Caroline Ramshaw
AnnaChaplaincy@outlook.com

Reader Pim Baxter (07710 116269)

Churchwardens

Eastling Andrew Baxter (01795 890598)

Administrator Janet Payne
E mail: eastlingchurch@gmail.com

Stalisfield with Otterden
Jenny King (01795 890366)

Administrator Shirley Pritchard
Email: Stmarystalisfield@gmail.com

Throwley

Contact Alison Young (01795 890213)

Parish Office Email: eastlingchurch@gmail.com

facebook.com/highdownsbenefice

From The Registers

Wedding

Clare Mangan and Timothy Chapman
3rd September 2022 at Eastling

CONTACT THE *GOOD NEWS* EDITOR

Hilary Harlow 01795 890338

If you would like to submit articles, or to advertise in the November 2022 magazine, send your submission by 20th October to: goodnewsmagazine@me.com.

Past and current issues of the Good News may be viewed on www.goodnews.rf.gd

Anna Chaplaincy

Please contact our Anna Chaplain, Caroline Ramshaw, if you know of someone who is isolated, alone, or unable to attend church.

An Anna Chaplain can offer a listening ear and company.

Communion can be brought to you in your own home.



Contact your local Anna Chaplain on:
annachaplaincy@outlook.com

07799538809



Screen Printing Workshop - Monday 3rd October

A one-day workshop, held in the Orangery, introducing you to the art of silk screen printing. The morning session begins with a tour of the gardens to gather inspiration for your prints. Back in the Orangery you'll learn about the basic principles of screen printing and set up a screen using a blocking fluid technique to produce a beautiful, detailed print. £60.00pp all materials and printing equipment supplied.

Winter Health Workshop - Wednesday 5th October

During this workshop, you will learn about a number of culinary, medicinal, easy to grow herbs and plants and how they can support your body and mind through winter. You will get the opportunity to make a delicious winter tonic to help you get through the cold season as well as learn how to make your own remedies for coughs and colds. £50.00 per person, online booking required.

Adult Cooking with Fire Workshop - Tuesday 11th October

Spend time in the woods learning how to cook delicious food over fire. You will use a variety of cooking equipment and styles, including learning how to bake using Dutch ovens. You will also learn how to build a fire, manage it and control the heat. £80.00 per person, booking online required.

Wild Classroom Family Cooking Workshop - Tuesday 25th October

Step outside this autumn with Wild Classroom, where you and your family will be able to cook over fire using fresh ingredients from our Kitchen Garden. Once the session is complete you will have the opportunity to explore the beautiful setting at Belmont. £65.00 includes the registration of 2 adults and 2 children aged 4 - 15 years.

Rosemary Distilling Workshop - Wednesday 2nd November

During this workshop, you will experience every stage of the process from picking the herbs, through to the distillation using a traditional copper still and take away your own bottle of rosemary hydrosol to see you through the cooler months. £50.00 per person. Light refreshment provided.

Belmont House & Gardens, Throwley, Faversham, Kent ME13 0HH
www.belmont-house.org

Otterden and Stalisfield W.I.

Our September Speaker, Mandy Oliver, was like the plants she promotes - a breath of fresh air. Mandy spoke with great knowledge on her subject of Herbs and Wild Flowers. She did not use any notes so the evening was very informal and enjoyable, with the audience able to participate along the way and went on longer than anticipated! Her Workshops at Belmont House must be well worth attending.

The Meeting on Wednesday 5th October will have a fellow WI Member from Hollingbourne coming to speak to us. Edna and her daughter Anna set up their business Sugar and Spice, working from home producing jams and preserves to their own recipes. They attend various local Farmers Markets as well as our own Fete in August, proving to be a very popular stall. They also produce Christmas puddings from this time of year. We will be able to sample and purchase their produce at the Meeting.

Our group is gradually increasing in numbers, so if you would like to join us, please come along as a Guest to try us out. We generally meet the first Wednesday of each month at Stalisfield Village Hall, at 7.30 p.m. Please contact our President Helen Brooks on 07477580727 or Secretary Ellie Cameron on 01795 892016.

Before Windrush: the presence of black people in Britain

Since Roman times people of African origin and descent have lived in Britain. This is a rich and developing story of human resilience and protest by black men and women, adults and children, who lived in Britain, including Kent, as workers, students, political activists, writers, Christian clergy and evangelists, through the years before 'Windrush'.



Speaker: David Killingray

When: 13th October 2022

Where: Parish Hall, Station Road

Time: 7.30pm doors open

Talk starts promptly at 8pm



CHARING & DISTRICT LOCAL HISTORY SOCIETY

www.charinghistory.co.uk



Christmas Trees

2022



With your great support, last year we raised £9,165. These donations are given to over 40 local parish churches and 20 charities.

We have a very good selection of Christmas trees available of many varieties, shapes, colours and aromas, between 5 and 12ft in height. We also have some up to 16ft - ideal for schools, churches, village halls and outside spaces.

Since we started this fundraising scheme 30 years ago, the procedure is the same: you can visit to choose your tree from late September, and return to collect it in December nearer Christmas. As before, the arrangement is for you to make a donation for your tree; over half will be returned to your Parish church and the rest goes to the 20 charities. This is a great chance for you to raise funds for your Parish church and some deserving charities at the same time.

Please get in touch with us to book a time and date to come to choose your tree, by emailing, texting or phoning. (Please postpone your visit if you have covid or suspect you have it).

Email nashsfarmhouse@btinternet.com

Landline 01795 532596. Mobile 07910 248 308

Many thanks for your support

Peter and Alison Howard

Nashs Farmhouse, Luddenham, Faversham ME13 0TQ

Plasterer P. Hadley

All aspects of plastering covered
18 years experience

- Ceilings or Walls, Old or New
- Lime Plastering & Heritage Work
- Plaster Boarding
- Over skimming of Artex
- Tiling
- Property maintenance

No job too Large or Small

Friendly Clean and Reliable Service

For a no obligation free estimate or advice call Paul on

Ospringle 07740 530426



always there for you

EaziHealth is a UK registered online pharmacy with a focus on healthcare and customer service

Our services

- Erectile dysfunction, Emergency contraception
- Free delivery service
- NHS repeat prescriptions
- Private prescriptions
- Stop Smoking
- Video Consultations
- Weight Loss Management

Our contact:

Telegram & WhatsApp: 07761313828

Tel: **01227 913 444 / 01795 597801**

**Unit C The Market Place, Brogdale Farm
Brogdale Road Faversham
ME13 8XZ**

www.eazihealth.co.uk

Southern Cesspool Services



Tank Emptying

Treatment Plant Servicing and Jet Washing

Regular Empties

Clean Quick & Efficient

British Water Accredited

01233 646767 / 732407

07773 491356

www.southerncesspoolservices.com

***We Pride Ourselves On First
Class Service***

How can I resist evil?

With Halloween coming up, we shouldn't forget that Satan's existence is assumed throughout the Bible and Jesus prayed 'deliver us from the evil one' (Lord's Prayer). Paul adds: *'For our struggle is not against flesh and blood, but against the rulers, against the authorities, against the powers of this dark world and against the spiritual forces of evil in the heavenly realms'* (Ephesians 6:12).

The spiritual world directly affects the physical, when evil powers oppose God's work. However, God is sovereign and evil can only operate as He permits. We cannot blame Satan for our own wrong choices! *'There are two equal and opposite errors into which our race can fall into about devils. One is to disbelieve in their existence. The other is to believe, and to feel an excessive and unhealthy interest in them.'* (CS Lewis).

How does Satan operate in our lives?

By spoiling God's work in us (John 10:10)

By hindering our spiritual understanding (2 Corinthians 4:4)

By sowing doubts into our minds (Matthew 4:3,6)

By tempting us to break God's law (Genesis 3:6)

How do we resist evil? On the cross Jesus secured victory over Satan, *'And having disarmed the powers and authorities, He made a public spectacle of them, triumphing over them by the cross'* (Col 2:15). Although Satan is still active today, his power is broken and he will be destroyed when Jesus returns. In the present we should put God first in our lives: *'Submit yourselves, then, to God. Resist the devil, and he will flee from you'* (James 4:7). Making Jesus our Lord, gets Satan on the run!!

'There is no neutral ground in the universe: every square inch, every split second, is claimed by God and counterclaimed by Satan' (CS Lewis).

by Canon Paul Hardingham

DELECTABLE EDIBLES



**CATERER
& CAKE MAKER
FOR ALL OCCASIONS**

Near Faversham, Kent

Contact: Charlotte 07803204614

Email: shattuckcharlotte@gmail.com

Instagram: [delectable_edibles01](https://www.instagram.com/delectable_edibles01)

Facebook: [Delectable Edibles](https://www.facebook.com/DelectableEdibles)



A D Pink Electrical

All types of domestic electrical installations undertaken, from full rewires to single sockets.

Garden and security lighting.

Landlords' Electrical Safety

Certificates. Fully insured

*NICEIC Part P
Domestic Installer*



Local Tradesman

Tel: 01622 884774

07761 559 744

Email: andypink1@aol.com



The Arts Society Faversham

We run regular monthly lectures on the fourth Thursday at the Alexander Centre, Faversham. Come along to a lecture as a guest (£5 fee) or join for a year's lectures.

Our next lecture is on the 27th October 2022 at 11.00am on **"The Evolution of Street Art" by Roger Mendham.**

Coffee and biscuits will be served from 10.20am
Please note this lecture is preceded by the AGM at 10.45am.

Over the past 40 years street art has evolved from its roots in American graffiti to becoming a global art movement. From portraiture to abstract expressionism, many of the major conventional genres are included in street art and the leading artists have "exhibited" their work internationally.

This talk will focus on different styles of street art as well as some leading artists, including Stik, whose collaboration with Ingrid Beazley of the Dulwich Gallery led to the creation of the Dulwich Outdoor Gallery.

Biography

A keen and accomplished photographer Roger has gained Distinctions from the Royal Photographic Society and is currently the President of the Surrey Photographic Association. A scientist by background, his interest in art was sparked by his wife's academic studies into the History of Art and he has a particular interest in 20th century art. With his focus on the visual aspects of art he has studied the evolution of photography from its earliest days in the early 1800s to becoming a major art form in the late 20th and now 21st centuries. An experienced public speaker, his talks are all richly illustrated with both his own and images from some of the leading photographers in history

For further information contact us at info@theartsocietyfaversham.org.uk

The Long and Winding Creek



Geoff Sandiford's latest musical presentation celebrates the history of Faversham Creek from Roman times through to the more recent demise of the famous Raft Race.

The live acoustic band - *Dominic Abrams, Al Clark, Geoff Sandiford, Helen North, Dominic Sandiford* - guides you



through the story with original songs set against a backdrop of exquisite period photographs.

Doddington Village Hall - Saturday 8th October, 7.30pm

Tickets from Doddington Service Station: £8

To reserve tickets tel: 01795 886332 / leslieroberts7@gmail.com

In aid of Doddington Church funds.



Holistic Therapies by Ben Barnett



- 28 years experience providing & teaching Holistic Therapy
- Hydrotherm Massage on a warm water mattress, face up 3D access to back & neck, no face holes or laying on front
- Work with mind & body to effect conditions such as back pain, neck pain, shoulder issues, sports injury, work stress
 - Combines soft tissue massage, stretching and guided visualisation
- Auricular Acupuncture for sciatica, hay-fever, quitting smoking, balancing hormones & detox
 - Qualified & experienced in pregnancy massage & working with clients with cancer
 - Garden Clinic situated in the tranquil village of Eastling
 - Prices start from £50

T: 07740 557 555

E: hello@benbarnett.co.uk

Fb: @HTbyBB



DAY & EVENING VENUE & ONLINE FITNESS CLASSES

in FAVERSHAM with Leigh Miles

0787 343 1952

leigh.fitness@btinternet.com

www.milesdanceandfitness.com

Mathew Winslade Your local village Chimney Sweep



'Keeping real fires safe.'

Fully insured and a member of the Institute of Chimney Sweeps

If you need a chimney sweep or any other chimney service please get in touch

2 Kettle Hill Eastling Kent ME13 0BB

www.yewcottages.com yewcottages@outlook.com

07748 912530

01795 890904



YOUR LOCAL BOILER MAN

Call or email for boiler services and repairs



northdownsgas@outlook.com

07969 084 665





The Fall

by Audrey Keen

The spider busy with her chore
To thread the ride
With webs and lines,
Walks on unnoticed by the wanderer
there.

That is, until the red sun shines,
And where the pigeon's feathers float
And red brown pheasants clear their
throats.

Where the timid fox indicates by scent
That from this path to that he went,
And busy rooks come yet again
To wake the wild wood with their call.
I take deep breaths of heaven
When I inhale the presence of the fall.



THE ARTS SOCIETY EGERTON

The Arts Society brings people
together through a shared curiosity
for the arts

THE ART OF THE TABLE: FEAST AND FANTASY

Presented by Nicole Mezey

WEDNESDAY 12th OCTOBER 2022 at 2.30
p.m.

in THE MILLENNIUM HALL, ELM CLOSE,
EGERTON TN27 9DS

Through the centuries, food and its rituals have provided a vibrant opportunity for artists to celebrate, to analyse their world and even to develop complex ideas of morality.

Nicole Mezey was first Director of the Department of Art History at Queens University, Belfast and Fellow of the R.S.A. and of the Higher Education Academy.

For further details about this and other lectures visit our website at <https://theartssocietyegerton.org.uk>

Visitors are always very welcome at £5, refunded if you join. A year's membership, including 10 lectures and Arts Society magazine, costs just £40 (£70 for couples). For further information please contact Christine Willis, our Membership Secretary via cmwillis75@gmail.com or 01233 756377.

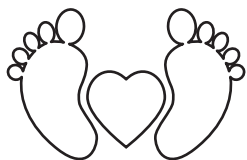
JM WEBSTER

PLUMBING AND HEATING SERVICES
OIL TANK INSTALLATION AND INSPECTIONS
OIL GAS LPG
INSTALLATION SERVICE AND REPAIR
BATHROOMS AND GENERAL PLUMBING
OFTEC AND GAS SAFE REGISTERED



jimwebster5778@btinternet.com

07971 589 019



Treat your Feet FOOTCARE

Nail cutting, corns and callus,
fungal foot and nails, verrucas,
ingrown toenails and care of
the diabetic foot

Rebecca Lapslie
MCFHP MAFHP

Foot health professional

Home visits

01795 486849
07734 698792



Conveyancing
Quality

thorneloe&co

SOLICITORS • SINCE 1989

Now part of Hallett & Co

01622 859 416

lenham@hallettandco.co.uk

www.hallettandco.co.uk

St Mary's House, The Square
Lenham, Kent ME17 2PH

Authorised and regulated by the Solicitors
Regulation Authority Registered No. 50485



Just up in Stalisfield; we are a family run, independent, awarding winning, fine dining pub & restaurant with outstanding bedrooms.

We are currently recruiting for

- Casual waiting & bar team members (evening & weekends) includes holiday pay + tips
- Casual cleaners for our bedrooms (midweek & weekends) includes holiday pay
- Casual pot wash (weekends) includes holiday pay + tips

Some previous experience is ideal, but willingness to work & a good personality is essential we can teach you the rest!

Also great opportunity for full time manager!

(previous experience in the industry required)

Please send your CV to info@theploughinnstalisfield.co.uk



COST OF LIVING SCAM

OFGEM ENERGY REBATE SCAM



SCAM WARNING

Action Fraud is warning of a rise in scam emails pretending to be from Ofgem offering a rebate payment on your gas and electricity bills.

- ⊖ The email is titled "Claim your bill rebate now"
- ⊖ You are told to click on a link
- ⊖ The link will take you to a malicious websites designed to steal personal and financial information

This is a scam! Rebates will be applied automatically - you do not need to register!

- ✓ Remember, your bank or any other official source will never ask you to supply personal information via email.
- ✓ If you have received an email which you're not quite sure about, forward it to report@phishing.gov.uk.

Kent residents are being targeted by a WhatsApp scam. Residents are being contacted by someone **impersonating a family member** who requires help as they claim that their phone has broken.

The scammer claims to be the victim's son/daughter and asks the victim to help them urgently to send a sum of money (£2,600 in one case) to an account number.

Scammers are using this underhand tactic to con unsuspecting parents.



Eastling Neighbourhood Watch

Village Warden 07794 010 394
or 01795 890848



Police 101 Emergency 999

There have been many reports of fly tipping in our area. Please report it if by chance you come across anyone carrying out this despicable act. Try and obtain a vehicle registration or a description of the vehicle and location and contact the police or Swale Borough Council, or let me know and I will pass on the information. Do not approach the persons involved as, you can guess by the act they are carrying out, they would not be very pleasant.

Again, there have been reports of hare coursing and people poaching with the use of air rifles in our area. Both acts are illegal so if seen please report it.

I have seen a male riding through the village without a crash helmet on. This makes me think that the motorbike is also illegal so if any body knows about this please contact me and, as usual, it will be confidential and the culprit caught.

With the dark evenings upon us it is recommended that vehicles are checked over to make sure all their lights are working properly.

There have been a few instances of anti social behaviour locally but as is normal this gets sorted out before it becomes a serious situation.

Have a good month and take care
Alan.

Barnie's Sweeps

Professional Brush & Vacuum Chimney Sweeping Service for Open Fires and Wood Burners

Clean Efficient Service

Institute of Chimney Sweeps Trained and Fully Insured

Certificate Issued after Sweeping

For Further Details please call Berni on 01795 581755 or 07751 109300

Visit me at www.barniessweeps.co.uk



Christina's Mobile Hairdressing

Weddings & special occasions catered for

27 years experience

Mob: 07894 524166

Email: Christinanorcott@gmail.com

A stylist who cares



theLeap Hypnotherapy



Catherine Scarlett BA(Hons), AFHEA, HPD
07887 350613 - cscarlett9@aol.co.uk

Help with -

Anxiety, Depression, Phobias, Sleep,
Smoking, Weight Loss etc.

GARDEN CLEARANCE

No job too small.

Mowing, strimming. Trees topped/removed.

Fences and gates erected.

For a free quote call

Nick Swatland **01795 886814**

mobile 07713 766141

//M & J ELECTRICAL KENT

Domestic & Commercial

Marcus Hammond

Tel: 01795 473959

Mob: 07592511612

Email:

info@mandjelectricalkent.co.uk



Pest Control Services

Rats, Mice, Wasps and
Bee Swarms removed



Discreet & Prompt Service

Local Tradesman

Contact Andy Pink

01622 884774 / 07761 559 744

From our County Councillor

I usually stick to writing about local matters in my updates, but it would be wrong not to acknowledge the national events of the past month.

In the space of just a few days we saw a new Prime Minister and new government, and then on the 8th September came the sad news of the passing of Queen Elizabeth II.

Queen Elizabeth was an incredible public servant, and the news of her passing has left many of us disoriented. Not only because the first week of September was already a time of great change, but mainly because Queen Elizabeth was the only monarch many of us had ever known. She was a constant in our lives (for many, most notably at family Christmases) from childhood right through to the present day and we not only feel her loss, but the loss of our connection to a fading generation. We mourn the past and feel a collective anxiety about what comes next. She

will be greatly missed as a stable presence in our lives.

Coming back to local matters, the ongoing issue of the proposed cuts to bus services across many parts of Swale East still looms over us. KCC's cabinet member made the decision in mid July to push ahead with the cuts, but I successfully

appealed for the decision to be reviewed by KCC's Scrutiny Committee. This meeting took place in mid August and the decision was referred back to full council for further debate. The full council meeting was scheduled for 15th September, but has been postponed in respect of the national period of mourning and has not yet been rescheduled.

Over the coming month I plan to start talking with parish councils to see what plans can be made to help vulnerable residents during the coming winter. Even with the newly announced price cap, energy prices will be soaring and some residents

may find it difficult to keep their homes heated throughout the winter. I will provide an update on this in next month's column.

In the meantime, if you are concerned about energy bills, this Which magazine calculator provides a useful estimate of what you can expect to pay for energy over the next couple of years.

www.tinyurl.com/energycosts22

Swale residents needing extra support can also contact The Fuel and Water Home Adviser Service; contact Steve Pettit on spettitt@children-families.org or telephone 01795 889233.

Rich Lehmann
rich.lehmann@kent.gov.uk
<https://kentgreencouncillorsnews.wordpress.com>

A Tribute to Her Late Majesty from Helen Whately M.P. is available to view on <https://www.eastlingvillage.co.uk>

Wags & Tales



Professional

Home from Home Dog Boarding

also Doggy Day Care

and animal taxi now available, safe and comfortable transport for your pets

Fully Insured, Enhanced DBS Check
Canine first aid course.

Also **Dog Walking** service for the surrounding areas.

For more details please contact:
Trudie on 01795 890114
or 0771 4455 769

Forgive the wasps - and learn to understand them

Chances are that you were irritated by wasps this summer – there were a lot of them about. But did you know what they were really looking for?

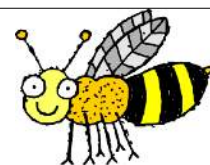
According to Prof Seirian Sumner, a behavioural ecologist and entomologist at University College London, we should try to “understand what wasps want, and what they’re doing at certain times of the year.” In early and mid-summer “they’re not that interested in sugar, they want meat. The adults are vegetarian, but they hunt prey to feed to the larvae, who give them a sugary reward,” she says.

“Then, when the larvae pupate [in late summer and early autumn], there’s fewer that need feeding, and they don’t need to hunt, so wasps are sort of furloughed. And then they go in search of sugar, usually in flowers. But your prosecco, or beer, or jam sandwich is just as appealing.”

Her advice, then, is to distract wasps from yourself by offering them meat in early to mid-summer, and a saucer of cider or some jam on a lid in late summer and early autumn.

Sumner stresses that the world would be much worse off without wasps: they are excellent at pest control and are also fine pollinators.

More on wasps in her book: *Endless Forms: The Secret World of Wasps* (HarperCollins)



Paul TANN Ltd

All aspects of groundwork undertaken
Driveway renovation including Resin
Patios and Paving
Foundations
Drainage
Fencing
Stonework
No obligation free estimates
Marshall's approved contractor

Call t: 01795 890292 m: 07873 965231

paultann.co.uk [paultannltd](https://www.facebook.com/paultannltd)



Tutoring

Kent Test Preparation
Primary Key stage 1 and 2
Booster sessions

Call: Hannah 07989 253555
Email: h.uglow@googlemail.com

Eastling Primary School

The School has had a wonderful start to the new academic year 2022-23. Our new Reception children have settled in quickly to school life in Acorn class. We were delighted to welcome a number of other new children who have joined us across the school. It is lovely to see how they have quickly become part of our school community.

The school has been very fortunate to secure a second term of Beach School with Swale Borough Council. Fifteen children from years 2 to 5 travel once a week to Swalecliffe beach for the term. They learn about native and non-native shells, estuaries and geographical terminology, litter picking, reducing, reusing and recycling. The children also learn how to hold crabs and identify a wide range of sea creatures.

Willow class have started their weekly swimming lessons at Faversham Pool and both junior classes are going to be visiting Faversham gym.

On Wednesday 21st September our junior classes are travelling to London to watch The Lion King in the West End. The school is extremely grateful to the Friends of Eastling School (FOES) who have kindly funded the entire trip.

Eastling Primary School are going to be part of Young Voices at the O2 again this year and Mr Glazier's choir have already started learning the songs.

On Friday 23rd September the school will be working with Wild Classrooms as part of our outdoor learning day. There are some wonderful delights planned including hung fish and venison as the junior children are learning about The Stone Age and Greeks.

The school will be holding the annual Harvest Festival in St Mary's on Friday 30th September. We are collecting donations for Faversham Food Bank.

The school governing body has a vacancy for a local governor. If this is something which you would like to learn more about or are interested in supporting your local primary school please contact the school office for further information.

The school has a couple of spaces available for an immediate start in Reception class. Any prospective parents looking for a Reception place for September 2023 are welcome to call the office on 01795 890252 to arrange a visit.

For further information please visit our school website where photographs and newsletters are displayed and updated regularly.

Melanie Dale, Headteacher

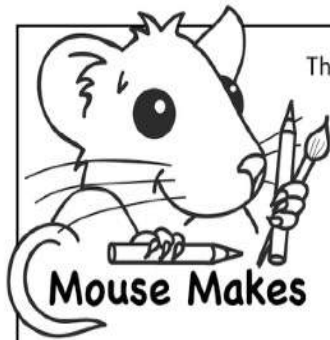


Autumn Term 2022
Wednesdays 7.00pm to 8.30pm
Years 7 to 13

14th September
28th September – Artist visiting the group
12th October
26th October – NO GROUP TONIGHT – half term
9th November – Glo night neon disco – invite a friend along
7th December – Location to be confirmed
21st December – Christmas party

contact:
clnorwood@doctors.org.uk
for more details

Supported by
RECONNECT
East Children and Young People




Mouse Makes

The New Testament has **four gospels, twenty one epistles** and the book of *Revelation*.

The **epistles** are a collection of **letters** that were written by the apostles to the early Christians, they contain teaching, instruction, advice and encouragement.

The Apostle **Paul** is thought to have written **thirteen** of the *epistles*...

 Look in your Bible to see who wrote the other eight and who they were written to.

The word **epistle** comes from the Greek word **epistolé** which means *letter or message*

How many people does Paul send greetings to at the end of his letter to the Romans?
.....

Which are the longest epistles?
.....
.....
How many chapters do they have?
.....

DID YOU KNOW...?
At the time of the New Testament letters were written on scrolls

Which is the shortest epistle?
.....
How many chapters does it have?
.....

G A L A T I A N S J A M E S E J S
W A E D I S P E T E R A P T L O C
R O T E T B A W R I T E H I R H R
I P T M U O U S P H I L E M O N O
T H E S S A L O N I A N S O M D L
C O R I N T H I A N S N I T A J L
S P H I L I P P I A N S A H N U S
M C O L O S S I A N S A N Y S D P
H E B R E W S H W E P I S T L E O

EPISTLE • LETTER • ROMANS • CORINTHIANS • GALATIANS • EPHESIANS
PHILIPPIANS • COLOSSIANS • THESSALONIANS • TIMOTHY • TITUS • PHILEMON
HEBREWS • JAMES • PETER • JOHN • JUDE • PAUL • SCROLL • WRITE