

October 25th
Bible Sunday
 Come and find out what
jewels can be found
10am in Eastling Church

Sunday 11th October
Harvest Festival, 10am
 in Eastling Village Hall
 Come and give thanks for the
 farmers who grow the food we eat.
 Contributions for the foodbank will be
 very welcome.

Eastling School News
 This academic year is now well underway as we start to welcome new interested parents to the school for visits... do please pass on our details to any friends or neighbours that you have with pre-school children (It's surprising that some locals don't know they have a Top 100 school on their doorsteps!). Come and visit our stall at the Faversham Market on 3rd October to find out all about our school!

It's our first Parent Consultation period this month (Tue 13th & Thu 15th) although parents have already been welcomed in to "Book Looks" and Class assemblies to share their children's work. Our next assembly comes from the Leopards' Class on Friday 2nd Oct (09:05) whilst a whole school presentation is our Harvest festival to be held at the school hall on Friday 16th Oct (9:05)

We have the Smart Brothers' Road Safety show visiting on Mon 19th Oct, just in time for the students' half term break starting on Thu 22nd Oct through to Mon 2nd Nov. In addition, we finish off our first term with a FOES Hallowe'en disco on the Thursday night so that the children can wear their scariest gear.

All our after-school clubs are running well with a choice of activities on most nights as well as After School care provision through to 5:30pm for parents who would like their children looked after whilst they finish off their working day. Our online school calendar gives details of the activities both within the school day and 'after hours'

[www.Eastling.kent.sch.uk/diary.php]

Thankfully, the work on the Brogdale bridge has been completed so transport to the school will be easier for our Faversham families.

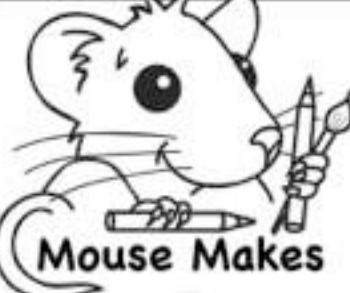
Dave Walsh

Faversham foodbank *Help feed local people in crisis*

Thank you!
 Thank you so much for your continued support for the work of the food bank. The items are collected regularly and taken to the Foodbank in Faversham. There are quite a few changes to the list of items required this month so please have a look at the list below. Don't forget: if you know someone in need of these services please check the Foodbank site at www.faversham.foodbank.org.uk to find details of opening times and how to access help.

Please continue to give generously .
Food list for October
Urgent items: pasta sauce; men's toiletries; adult toothpaste and tooth brushes; shower gel, shampoo and conditioner; tinned ham, spam, corned beef
Also needed: long life fruit juice; long life/powdered milk; tinned sponge puddings; sugar (500g); chocolate; tinned spaghetti; household cleaning products;

 sponsored by the trussell trust


 **Mouse Makes**

The Lord's teachings are perfect.
They give strength to his people.



The Lord's rules can be trusted.
They help even the foolish become wise.

The Lord's laws are right.
They make people happy.

The Lord's commands are good.
They show people the right way to live.


 from Psalm 19:7-8

Do you have a favourite bible verse? Write it here:

 Colour in the illustrated bible verse, cut out and use as a bookmark in your bible. 

GOD'S
WORD
 is a
LAMP
TO
GUIDE
my feet
 and a
LIGHT
 for my
PATH
PSALM 119:105

Oct 15 faversham notice - parishpump.co.uk

Good News

Parish Magazine

October 2015

HARVEST AUCTION
FRIDAY 9th OCTOBER, 
8pm at
The Carpenters Arms, Eastling
ALL WELCOME

This is an open invitation to all asking you to come to the local hostelry and have a great evening whilst bidding generously for the offered treasures. All donated items will be gratefully received at the Carpenter's Arms during open hours, where we will be happy to store them until auction day. Perishables should be brought on the day of the Auction. Thank you.



The annual Tug of War competition between Eastling and Stalisfield will take place on Sunday 11th October at 11.30 am on Eastling School playing field. This follows the Harvest Festival in the Village Hall at 10.00 am. This year the event is being sponsored by The Carpenter Arms. Following successive defeats to Stalisfield, Eastling feels their representative team is one of the strongest yet and are confident of victory. Do come and cheer on your village and their teams.

Harvest Festivals
Stalisfield
 Sunday 4th October
 3pm in Stalisfield Church
Eastling
 Sunday 11th October
 8am in Eastling Church
 10am in Eastling Village Hall



The news magazine for the parishes of Eastling, Stalisfield with Otterden, and Throwley
www.northdowns.plus.com/goodnews


BRIDGE
LUNCH
 at
Stalisfield Village Hall
 on
Thursday 15th October 2015
 from
12.00 - 4.00 pm

in aid of St. Mary's Church, Stalisfield
 Ticket price: £12.50 per person (to include light Lunch & glass of wine)
 Tickets from: Jean West 01233 712270
 Sheila Moger 01233 713212

Autumn Quiz Party
Stalisfield Village Hall
Friday 23rd October

The years get shorter. It's autumn again and time for that special blend of humour and erudition characterising the Stalisfield Autumn Quiz. You are invited to come armed with sharpened pencils and honed wit to Stalisfield Village Hall where quizmasters Ian and Nick stand ready to puzzle and entertain in equal measure. As ever, prizes will be unbelievable. Traditional rules apply: tables of not more than six, bring your own nibbles and tipples, start at 7.30 sharp, £2.50 per person. Join us with a full table or take pot luck. To reserve your place phone Ian on 01795 890475

Harvest Supper
Saturday 3rd October,
7.30pm
Stalisfield Village Hall

There is just time to request your place if you haven't already booked it. Good food, good company and modest price. Phone Shirley on 01795 890167.

Canon's Column

My God can cope with Immigration!

We are being bombarded daily by media reports about the migration crisis and how it is affecting many parts of Europe including Calais right on our doorstep. Various people have suggested courses of action or expressed fears that we will be overrun by all kinds of people who will forever change our lives.

When we look at the situation from a Christian perspective, there are several things we need to think about. A good place to start is with the life of Jesus. Immediately after his birth, Jesus became an "at risk" refugee having to flee to Egypt to escape the wrath of an unbalanced despot who murdered all of the male infants in the Bethlehem area in order to do away with a potential rival. Today people are fleeing from cruel and power hungry rulers who will not stop at murder of the families of any who might be a threat to them.

We also need to remember the words of Jesus from Matthew 25: 35ff, "I was a stranger and you took me in, I was hungry and you fed me...truly I tell you, just as you did it to the least of these...you did it to me."

There are many accounts in the Old Testament of the Israelite people migrating because of drought, famine and exile to Egypt, Babylon and Persia and the law told them to care for the alien in their land (Deut. 24:14) because they themselves had been aliens in a foreign land.

Prayer Pointers



October 2015

Sundays	For all who promote the Gospel in our Benefice.
Mondays	For the many refugees fleeing their countries.
Tuesdays	For all who work for the Food Banks.
Wednesdays	Give thanks for the Harvest.
Thursdays	For the sick, especially in these parishes.
Fridays	For all starting new education.
Saturdays	Pray peace in our world.

As we face the migration and refugee crisis, we need to ask ourselves several questions. First, what can we do to help these people? Secondly, what can be done to deal with the causes of the problems in their homelands? As we begin to think about our response, it helps to know that there are various groups and programs available to help us as individuals, families and communities to take part in meeting needs of the refugees.

Remember how Jesus allowed the Syrophenician woman to challenge him to provide healing to her daughter (Mark 7.24-30). God's grace and mercy are not confined or limited by geography, culture or nationality. Our God is a generous God and has the resources to cope with immigration. We have been rightly blessed and can become involved in meeting needs and changing policies. As community groups and individuals seek initiatives to help in this crisis, we as Christians should become involved.

You may have heard this story but it is worth repeating. A man was walking on a beach after the tide had gone out. He met a boy picking up stranded starfish and throwing them back into the water. The man thought it was a futile task and told the boy that he couldn't make much difference because there were just too many starfish stranded. The boy shrugged his shoulders and said, as he threw one more fish back into the water, "made a difference to that one, didn't it"!

Bishop Trevor Willmott, who has visited the migrant's camp in Calais, has written this prayer for us to use and I recommend it to you.

Almighty and merciful God whose Son became a refugee and had no place to call his own; look with mercy on those who today are fleeing from danger, loveless and hungry. Bless those who work to bring them relief; inspire generosity and compassion in all our hearts and guide the nations of the world towards that day when all will rejoice in your Kingdom of justice and peace, through Jesus Christ our Lord. Amen.

Blessings,

Canon Donald Lawton

Refugee Crisis – five ways to respond

(Compiled by the Communities and Partnerships Framework)

Bishop Trevor has spoken of the need for compassion and a focus on the humanity of all those affected by the refugee and migrant crisis. He has said that it is our 'moral duty' to take their situation seriously. Archbishop Justin has also stated that the situation being faced now is a 'complex and wicked crisis that underlines our human frailty and the fragility of our political systems.'

On this website www.canterburydiocese.org/refugee-crisis-five-ways-to-respond/ there are five ways we as Christians in the Diocese of Canterbury can respond to the continuing crisis.

(If you do not have access to a computer and would like a printed version, please call Hilary on 01795 890338.)



Congratulations Caroline

On Sunday 20th September 2015 Caroline Ramshaw was presented with her Reader's Scarf during a service in Canterbury Cathedral, when she received the Bishop's licence to perform the duties of a Reader in the Canterbury Diocese.

Refugee Crisis

The recent, awful pictures of the lifeless body of 3 year old Aylan Kurdi on a Turkish beach has forced many people to recognise that now is the time for us to do much more. While our elected representatives grapple with the political issues, the humanitarian imperative for us all is to act. Individuals and communities must think 'outside the box' about what we can do.

Local communities have begun coordinating numbers of those people willing to offer a room or space for refugees in their own home. It is being proposed that Sports and community halls be made available to provide temporary accommodation. With will and the cooperation of our elected representatives in local and national government this can be done.

There have been examples of locally raised sponsorships to support refugees in their communities, and some funding is available through the Vulnerable Persons Relocation Scheme funded by the E.U. These are the people fleeing unimaginable horrors in their home countries and

are willing to risk everything to seek a better life for themselves and their families. These people at the mercy of people traffickers, and are drowning in the seas where we paddle and swim with our children on our annual holidays. It is **us and our children**, but for the lottery of where we happened to have been born.

In our local Parishes can we identify and coordinate numbers of people willing to offer temporary accommodation, as well as looking at the potential for using community resources, and alert local politicians to what we have to offer?

At this stage it's about local commitment and numbers. Please contact us if you feel able to help, and please join us **at Eastling Village Hall on Monday 19th October @ 7.30** to discuss the way forward in an open forum.

Greg Gibbins
Janice Lowe
Sue Chandler
Eastling
07787062634

HALLOWE'EN? Try another way!

Across the centuries there have been two traditional feast days that signal the end of Harvest and the beginning of Winter. They were known under the name of 'Hallowtide.' All Saints Day, on November 1, is followed in some traditions by All Souls Day on November 2. Both, to a large degree, have been held to commemorate the lives of past saints and martyrs of Jesus Christ. They are preceded on October 31 by Hallowe'en – a derivation from 'All Hallows Evening.'

Partly because Hallowe'en heralded the dark days of Winter, it steadily came to adopt a 'darker' feel, featuring – along with the traditional carved pumpkins and apple-bobbing – a party atmosphere, geared to children, with play-acting along the lines of goblins, witches and broomsticks. This ethos



has been dramatically fed in recent years by films and books teetering on the magical and the occult, to the extent that Hallowe'en today, with the help of massive commercialism, has become Britain's third biggest festival of the year.

In earlier times these antics could perhaps be accommodated, even adopted, as a piece of fun within the life of a village. But with the growing influx of cultures that are alien to the traditional Christian West, we now have on our doorstep heathen ritual malpractices, 'honour killings' and sub-human hatred and terrorist plots that echo Solzhenitsyn's diagnosis: "The demon of evil like a whirlwind triumphantly circles all five continents of the earth." What genuine place can Hallowe'en have in all this?

It is timely that churches and Christian groups are now putting on their own creative fun nights on October 31. Just click to the internet to devise yours!

True; evil can feel fun! But - emphasised the French philosopher Simone Weil - it is only FICTIONAL good that is boring and flat, while it is FICTIONAL evil that is attractive and profound. By contrast - she insists - real life turns the tables: "Nothing is so beautiful and wonderful, nothing is so full of sweet and perpetual ecstasy as the GOOD; no desert is so dreary, monotonous and boring as EVIL"

Eastling Neighbourhood Watch



Village Warden: 07794 010394
or 01795 890848
Crimestoppers 0800 555 111
Swale Police 101
Emergency 999

It has been reported in the media that the majority of bank scams etc. that have succeeded, have been against the under 25 year old persons so please emphasise to the youngsters that they are at risk from the fraudsters and to take extra care to whom they pass on their bank details.

Some car parts were found dumped at the top on North Eastling lane, the person who carried out this was obviously not too bright as they left the car number plate attached, which has subsequently been removed.

Over the last couple of months it has been noticed that more than usual number of cats have gone missing in local area and local villages going by the number of notices around. Anybody any logical reason for this?

It seems that Newnham Lane is becoming a bit of a speed run of late. It is a dangerous road and people do walk their dogs and also enjoy a walk so if the word of caution could be passed onto those that use it would be appreciated.

Have a good month and take care.
Alan, Village Warden

Growing Up

Your child has started growing up when he stops asking you where he came from and starts refusing to tell you where is he going.



The Plough Inn, Stalisfield; a family run, independent, award winning pub & restaurant offering

an extensive menu of restaurant quality food and pub snacks as well as a large range of unique & locally produced drinks.

Whiskey Tasting 30th September

Pre-booking required, please call for further details and to book.

Band Night 16th October

Playing live from 8.30pm

Bonfire Night 5th November

A simple bonfire that is now becoming somewhat of a Tradition at The Plough Inn!

And with the change in the weather we are now taking bookings for Christmas!

Stalisfield Road, Faversham, Kent, ME13 0HY
Tel: 01795 890 256 Email:
info@theloughinnstalisfield.co.uk

Services in our Churches

4th October Trinity 18

Genesis 2.18-24, Hebrews 1.1-4, 2.5-12, Mark 10. 2 - 16
 Eastling 8 am Holy Communion (BCP)
 Eastling 10 am Holy Communion (CW)
 Stalisfield 3 pm Harvest Festival

11th October Trinity 19

Amos 5. 6 - 7, 10 - 15, Hebrews 4.12 - 16, Mark 10. 17 - 31
 Eastling 8 am Holy Communion (BCP)
 Throwley 10 am Morning Prayer (BCP)
 Eastling 10 am Harvest CaféStyle in the Village Hall

18th October St Luke

Isaiah 35.3-6 or Acts 16.1-12a, 2 Timothy 4.5-17, Luke 10.1-9
 Eastling 8 am Holy Communion (BCP)
 Eastling 10 am Morning Prayer (BCP)
 Stalisfield 10 am Morning Prayer (BCP)

25th October Last Sunday in Trinity

Jeremiah 31.7-9, Hebrews 7.23 - 28, Mark 10.46-52
 Eastling 8 am Holy Communion (BCP)
 Eastling 10 am Bible Sunday Treasures
 Throwley 10 am Holy Communion (BCP)

1st November All Saints

Isaiah 25.6-9, Revelation 21.1-6a, John 11.32-44
 Eastling 8 am Holy Communion (BCP)
 Eastling 10 am Holy Communion (CW)
 Stalisfield 3 pm All Souls Service

~~~~~  
 (BCP) Service taken from the Book of Common Prayer, 1662.  
 (CW) Service follows Common Worship Liturgy, 2000.

## The Real Advent Calendar

A fun way to share the Christmas Story.

The calendar comes with a 32 page Christmas story activity booklet designed to be used every day in Advent. Behind each of the windows there is a fairtrade chocolate star and a few words from the Christmas story.



As well as celebrating the true meaning of Christmas, the calendar makes a charity donation, from every sale, to Traidcraft Exchange and the Funzi & Bodo trust. At £3.99 each you can order them from Hilary on 01795 890338, or come to Tea and Cakes at Pinks Farm on 4th October, 2.30 - 5pm. [www.realadvent.co.uk](http://www.realadvent.co.uk)

## The High Downs Benefice

Rector Revd Canon Donald J. Lawton (01795 890487)  
 The Rectory, Newham Lane, Eastling ME13 0AS

Reader Norman Fowler (01795 890412)  
 4 Meesons Close, Eastling

Reader Hugh Perks (01795 890603)  
 Weald Cottage, Eastling

Reader Caroline Ramshaw (01795 892088)  
 4 Glebe Cottages, Eastling

### Churchwardens

Eastling Andrew Baxter (01795 890598)  
 Assistant Warden Steve Youle (01795 890368)

Parish Administrator Janet Payne (01795 890487)  
 E mail: eastlingchurch@gmail.com

Stalisfield with Otterden Jean West (01233 712270)

Parish Administrator Sheila Moger (01233 713212)  
 E mail samhawksnest@aol.com

Throwley Glynn Howland (01795 890094)  
 Barbara Elliott (01795 890020)

### From the Registers

#### Funeral

Ray Dennis  
 17th September 2015 Cremation at Charing

### Midweek Groups

**Tuesdays:** Monthly study group, on 13th October, 10am at Garden Cottage, Eastling. 01795 890368

**Tuesdays:** Weekly study group, 7.30pm Pinks Farm, Kettle Hill Road, Eastling. 01795 890338

**Thursdays:** Weekly prayer group, 10.30am Pinks Farm, Kettle Hill Road, Eastling. 01795 890338

**Fridays:** Weekly study group 10.45am, 6 Kettle Hill Cott, Eastling. 07780 661275.

*You will be welcome at any of our groups.*

### Room at the inn?

Charity HOST is seeking friendly people who could volunteer to offer an invitation

to adult international students for a day, weekend, or four days at Christmas. Learn about other cultures, welcome a guest far from home, and make the world a little friendlier! To be put in touch with your local organiser, visit [www.hostuk.org](http://www.hostuk.org) or call 020 7739 6292.

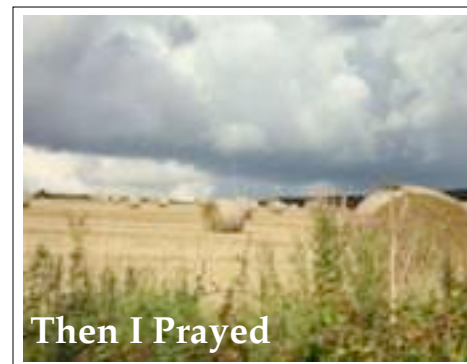


## Faversham Abbey Virtually illuminated

Saturday 24th October  
 7 - 9pm  
 Queen Elizabeth's Grammar School Playing Field, Abbey Place, Faversham  
 Lantern procession leading to a full-scale light-sculpture performance revealing Faversham Abbey's location and size with dramatic stage lighting effects, live medieval plainsong, ambient soundscape, and refreshments.  
 Contact: [info@creek-creative.org](mailto:info@creek-creative.org) / 01795 535515

## Variety Concert

Lynsted Church, ME9 0RQ  
 Saturday 17th October,  
 7.30pm  
 The Community Overseas Aid Project presents a variety concert featuring Doddington Ukulele Movement, The River Band, The Faversham Waytes, comedy sketches and witty monologues. Proceeds to humanitarian aid work in Malawi. Tickets £10, to include a glass of wine and nibbles.  
 Contact: Jo Sidney, 01795 521714



### Then I Prayed

When I walked across this field  
 Where corn once grew,  
 And breathed the mingled odours  
 Of the grasses new;  
 As I stood to harken  
 At the rooks that played;  
 I closed my eyes just then  
 and prayed.

When rain did mercilessly fall  
 And winds raged ardent in their call,  
 When grey clouds raggedly displayed  
 Themselves onto the sky  
 I prayed.

But when the sunlight came  
 onto the stubble ground,  
 And wind recaptured  
 Made no sound;  
 When the tearful rain did cease  
 And dull cloud fade;  
 I thought a while on all these things,  
 And then I prayed

*Audrey Keen*

## Otterden & Stalisfield W.I.

August and September have been busy months for the WI, with the ladies providing tea and cakes for the Stalisfield Village Fete, we then had our meeting on the first Wednesday of the month, which was Morris Dancing, with some ladies participating and others just spectating, then on 18th we had a Wine & Wisdom evening, filling the Hall for an evening of Trivia and Fun. On 7th October we have a speaker, Ann Chance, and her talk is called 'Saddle Sore in Montana', which sounds interesting; 7.30pm in Stalisfield village hall.

Once again, anyone wishing to join our group please contact Stephanie Culver 01795 890748 or Lesley Andrews 01795 890581.

## All Souls' Service Remembering our loved ones

Sunday 1st November,  
 3 pm,  
 in Stalisfield Church.

### All Welcome

If you would like to have a loved one remembered at this service please write their name on the slips provided in our churches, alternatively contact Jean West on 01233 712270 or Sheila Moger on 01233 713212.



## STALISFIELD HIGHLIFE

### August Fete

Good weather, fabulous support, everyone happy and receipts of over £2,000- could there be better?

So many people contributed to the success of the occasion that thanks can hardly be ascribed to the individual supporters who year on year have provided equipment and services for the hardware of the event including public address system and items for sale or for prizes. The heroes manning the stocks and stands performed admirably and the competitions and contests were organized admirably.

Sustenance came from the busy barbeque and from the refreshments provided by the WI. The intrepid young gleefully dunked themselves in the pool below the slippery pole and happily smashed old crockery. Applause Theatre's Balloon Man held his youthful audience spellbound with his performance,

culminating in entering fully into his balloon.

Pockets were raided to provide the handsome sum raised which will make a significant contribution to the running costs for the new hall.

Special thanks are extended for the generous donations for prizes for the Luxury Draw, tickets for which were diligently sold at £5 per strip.

The prizes were:

£100 meal tab deposited at The Plough by **Dovetail Polymers**, two glider flights donated by **The Kent Glider Club**, lunch with wine donated by **The Bowl Inn**, a family ticket to Wildwood Park donated by **The Wildwood Trust**.

As ever, the efforts needed to stage such a day were made worthwhile by wholehearted support from the village.

## Sew for fun in Stalisfield

Relaxed and Friendly environment. Small class sizes.  
 Bring your own machine and develop confidence in sewing.  
 No machine? No problem! Use one of ours - please specify on booking.

Classes include all materials  
 Have fun, learn new skills and tricks of the trade  
 Take home a project to be proud of!

### Tea and cake provided

Make luxury Christmas Bunting, large choice of colours  
 22nd October. 1-4pm. £30

Make a padded, luxury advent calendar  
 2 week course. £65. 12th AND 19th November

Make a traditional, monogrammed Christmas Stocking  
 Tue 1st December, 7.30-10.30pm. £35

Book Now!

### Sew Clever

Call Su 01795890334

e-mail [sewcleverinfo@yahoo.co.uk](mailto:sewcleverinfo@yahoo.co.uk) or find us at [facebook.com/sewclever](https://www.facebook.com/sewclever)

## BUGS, PLAGUES AND PESTILENCE:



*The History of Infectious diseases and epidemics. This talk covers the rise of the great historic epidemics, where they came from and how they were controlled.*

Speaker: Dr. John Reuther  
Thursday 8<sup>th</sup> October 2015  
in Charing Parish Hall, Station Road  
Doors open at 7.30pm  
the talk starts promptly at 8pm  
**Charing & District Local History Society**  
www.charinghistory.co.uk

## Craft Club

Painter's Forstal with Selling WI run a Craft Club monthly in the small room at Champion Hall, up in the village. You do not have to be a WI member to attend!  
On Wednesday 14<sup>th</sup> October from 11.15am - 1.15pm, we will be having an ART SESSION with a local artist. Please bring along any art work you have already started, otherwise all art materials will be provided, along with some home made cake, tea and coffee all for £5.  
Please do feel free to come along and join us. If you have any questions please ring Pat on 01795 539629



## Oyster Morris

A mixed Cotswold dance team from Canterbury are recruiting now.

If you are interested in this traditional form of dance, you are welcome to come to a taster session. Morris dancing is a good fun hobby, full of tradition with keep fit benefits.

Come and have a go.

Lifts from the local area could be arranged, if interested please contact - Elaine Sprawson on 01795 890518



## Choir for Christmas Eve Carol Service

Choir Practices start on Sunday 15<sup>th</sup> November, 5 - 6pm, in Eastling Church  
All voices welcome, especially men.  
Call Andrew on 01795 890598

## GARAGE SALE

Wiltons, Newnham Lane

Eastling  
SATURDAY 3<sup>rd</sup>  
OCTOBER  
2pm - 4pm



Garden furniture and tools  
Household items  
Many board games  
3 set golf clubs including junior set  
Car roof box  
Items of furniture and so much more  
All proceeds will go to charity split between Eastling Church and Kent Young Carer

## The Madagascar School Project

Science Block Fundraiser



Sunday 4<sup>th</sup> October

2.30 - 5pm at

Pinks Farm, Eastling

Homemade Cakes to eat in or take home  
We will have Traidcraft gifts and Christmas Cards to buy/order, a great range of Phoenix Cards and Julie Kyte's beautiful cards too.  
Call Norma on 01795 890487  
or Hilary on 01795 890338

ALL AGES  
WELCOME

Check out the school website at  
www.madagascarschoolproject.com  
for up-to-date information or come and view the latest DVD while enjoying cake and a cuppa.  
Let's make this Science Block happen!



BelmontHseGdns



Belmont House and Gardens



## BELMONT HOUSE & GARDENS EVENTS

### WOOD FEST

Saturday 10<sup>th</sup> & Sunday 11<sup>th</sup> October, 10.00am - 5.00pm

The Belmont Wood Fest is a new event for 2015. This is a two day event for all the family, celebrating all aspects of our woodland. A variety of exhibitors from the wonderful world of wood will be demonstrating their traditional skills and craftsmanship. We have horse logging demonstrations, falconry displays and much more. There will be a variety of live music, local food and craft stalls.

Adults £10.00, Children under 12 are free! Dogs allowed on lead only.

If you would like a stall at this event please email: [events@belmont-house.org](mailto:events@belmont-house.org)

### FORAGING DAY

Tuesday 20<sup>th</sup> October, 10.00am - 4.00pm

Belmont house is teaming up with Badger Bushcraft to bring you a series of workshops, starting with an autumn foraging day. £40.00pp. refreshments provided. For more information please visit our website.

### HALLOWEEN AT BELMONT

Sunday 25<sup>th</sup> October, 12.00pm - 3.00pm

Spend your Halloween at Belmont where there'll be lots of tricks and treats for all the family, including a spooky trail around the gardens, pumpkin carving and a scary workshop hosted by 'Hand Crafted events'. Fancy dress is most welcome. The tearoom will be open from 12.00pm for soup, cream teas and homemade cakes. £5.00 per child, adults are free of charge.

### CHILDREN'S HALLOWEEN COOKIE CLASS

Thursday 29<sup>th</sup> October, 10.00am - 12.00pm

Come and get into the spirit of Halloween! Children can enjoy making all sorts of spooky cookies. All ingredients, aprons and equipment will be included. We only ask you to bring a container to take home your goodies. Refreshments provided. Gluten, nuts and flavouring will be used. £12.50 per child, suitable for children aged 8 - 13 years. To make a booking, please call 01795 890202.

**Belmont House & Gardens, Throwley, Nr Faversham, Kent ME13 0HH**  
[www.belmont-house.org](http://www.belmont-house.org)



## PAINTER'S FORSTAL with SELLING WI

will be holding their next meeting at the Champion Hall, Painter's Forstal on Tuesday 20<sup>th</sup> October, 2.15pm - 4pm.

We will be holding a 'Hand Cream workshop' by Chulo Naturals. This should be a fun event, so please come along and join us for the afternoon and check out what our WI is about.

## LEIGH MILES DANCE & FITNESS



### Eastling Village Hall

#### WEDNESDAYS

7.00pm ZUMBA®

#### THURSDAYS

9.15am FITNESS PILATES

#### OTHER VENUES

DAY & EVENING CLASSES

FAVERSHAM TEYNHAM

For details contact

[www.milesdanceandfitness.com](http://www.milesdanceandfitness.com)

[leigh.fitness@btinternet.com](mailto:leigh.fitness@btinternet.com)

01795 890149 or 07873 431952



LIKE Leigh Miles Dance and Fitness



@LeighMiles1

## Eastling Gardeners' Club

Meets on 15<sup>th</sup> October at 7.30pm in Eastling Village Hall for a talk on 'The Vegetable Garden' by G.J. Francis

Followed by drinks and nibbles  
Free to members, non-members £3

## Short Mat Bowls



With the Swale league under new management, one of the new rules that chairman Peter Richards has introduced, is that when teams play away, they can say which mat they want to play on as in the past, the home team always decided, so there was no choice. Some clubs are not happy with this new rule for it takes away the home advantage.

Our first game will be in the East Kent League will be away to Ash on October 9<sup>th</sup>, then it is more or less two games each week, as well as club sessions on Fridays, which take place in Eastling village hall, 2.30pm to 4.30pm and again 7.30pm to 9.30pm. For any more information contact Roy Piles 01795 537162.

## Thank You

Many thanks to everyone who came to the Macmillan Coffee morning at Manor Orchard. Your generous donations raised the wonderful sum of £226.00

## THROWLEY WALKERS

Fortnightly Wednesday walks on the North Downs, starting at 10:30am, covering about 4 miles and taking about 2 hours



**7<sup>th</sup> October**-Meet at Towne Place Orchard car park, Bagshill Road. The car park is a field near the entrance to Belmont. From the A251, follow brown Belmont signs rather than using the Belmont postcode. This is a level walk towards Throwley Forstal followed by hillier paths through Valley Farm, Walk Wood and South Wilderton.

**21<sup>st</sup> October** - Meet in The Plough Inn car park, Stalisfield Green, ME13 0HY for a mostly flat walk to Charing Hill and back.

**4<sup>th</sup> November** - An undulating walk starting from the main green at Throwley Forstal, ME13 0PJ. The route goes through Leaveland to Badlesmere and returns via Bell's Forstal and Dods Willows.

01795 892037; 07948 038993  
[annhutt@hotmail.co.uk](mailto:annhutt@hotmail.co.uk)

## SEASONED LOGS AND KINDLING

TEL: BEN ON 07970 549017



## EASTLING VILLAGE HALL

To book ring Alan Willson on 01795 890848



A beautiful hall in a lovely village location for your wedding, club, sports or meetings. The large hall has pretty grounds, car parking, meeting rooms and fully equipped facilities for professional or self-catering occasions.

## October



2015

|                                                   |                   |                          |
|---------------------------------------------------|-------------------|--------------------------|
| 3 <sup>rd</sup> Garage Sale                       | 2 - 4pm           | Wiltons, Newnham Lane    |
| 3 <sup>rd</sup> Harvest Supper                    | 7.30pm            | Stalisfield Village Hall |
| 4 <sup>th</sup> Tea and Cakes                     | 2.30pm            | Pinks Farm, Eastling     |
| 4 <sup>th</sup> Harvest Festival                  | 3pm               | Stalisfield Church       |
| 7 <sup>th</sup> Throwley walkers                  | 10.30am           | Towne Place Orchard      |
| 7 <sup>th</sup> Otterden & Stalisfield W.I.       | 7.30pm            | Stalisfield Village Hall |
| 8 <sup>th</sup> Bugs, Plagues & Pestilence        | 8pm               | Charing Parish Hall      |
| 9 <sup>th</sup> Harvest Auction                   | 8pm               | Carpenters Arms          |
| 10 <sup>th</sup> & 11 <sup>th</sup> WOODFEST      | 10am - 5pm        | Belmont                  |
| 11 <sup>th</sup> Harvest Caféstyle                | 10am              | Eastling Village Hall    |
| 11 <sup>th</sup> Tug-of-War                       | 11.30am           | Eastling School Field    |
| 13 <sup>th</sup> Mobile Library                   | 10.50 - 11.05am   | Glebe Cottages, Eastling |
| 14 <sup>th</sup> Craft Club                       | 11.15am           | Champion Hall            |
| 15 <sup>th</sup> Deadline for November Good News  |                   | See below                |
| 15 <sup>th</sup> Mobile Library                   | 11.55am - 12.10pm | Throwley Forstal Green   |
| 15 <sup>th</sup> Bridge Lunch                     | 12.00pm           | Stalisfield Village Hall |
| 15 <sup>th</sup> The Vegetable Garden             | 7.30pm            | Eastling Village Hall    |
| 19 <sup>th</sup> Refugee crisis meeting           | 7.30pm            | Eastling Village Hall    |
| 20 <sup>th</sup> Painters Forstal W.I.            | 2.15pm            | Champion Hall            |
| 21 <sup>st</sup> Throwley walkers                 | 10.30am           | The Plough               |
| 22 <sup>nd</sup> Christmas Bunting                | 1pm               | Stalisfield              |
| 23 <sup>rd</sup> Autumn Quiz                      | 7.30pm            | Stalisfield Village Hall |
| 27 <sup>th</sup> Magazine Folding                 | 2pm               | Pinks Farm               |
| 27 <sup>th</sup> Mobile Library                   | 10.50 - 11.05am   | Glebe Cottages, Eastling |
| 29 <sup>th</sup> Mobile Library                   | 11.55am - 12.10pm | Throwley Forstal Green   |
| <b>NOVEMBER</b> 1 <sup>st</sup> All Souls Service | 3pm               | Stalisfield Church       |

## FROM THE EDITOR

If you would like to advertise in the November 2015 magazine, submit articles or stories for publication, or would like any forthcoming events publicised, send your contribution by 15<sup>th</sup> October to: Hilary Harlow, Pinks Farm, Eastling, Faversham, ME13 0BA. Tel: 01795 890338. Where possible, please submit your entry by email: [goodnewsmagazine@me.com](mailto:goodnewsmagazine@me.com)

**Past and current issues of the Good News may be viewed on [www.northdowns.plus.com/goodnews](http://www.northdowns.plus.com/goodnews)**