

# Good News Parish Magazine High Downs Parish

Serving the villages of  
Eastling, Otterden,  
Stalisfield and Throwley

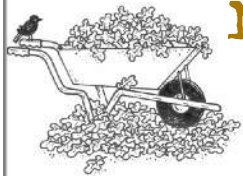
[www.goodnews.rf.gd](http://www.goodnews.rf.gd)



**5TH NOVEMBER  
CARPENTERS ARMS  
FIREWORKS**

BBQ IN THE COURTYARD  
BURGERS, HOT DOGS AND TOFFEE APPLES

BBQ STARTS 6.30  
FIREWORKS 7:30



## NOVEMBER 2022

- 2nd Otterden & Stalisfield W.I.  
Stalisfield Village Hall 7.30pm
- 5th Fireworks BBQ from 6.30, display 7.30pm  
Carpenters Arms, Eastling
- 9th Arts Society lecture, Egerton  
Millennium Hall, Egerton 2.30pm
- 9th Stalisfield Youth - Glo Night Neon Disco  
Stalisfield Village Hall 7 - 8.30pm
- 10th Singing Kettle song group  
Newnham Village Hall 2 - 3pm
- 10th Local History Society  
Charing Parish Hall 7.30pm
- 11th Eat, Pray, Walk  
Doddington Church 1.30pm
- 13th Remembrance Service  
Throwley Church 10.45am
- 20th Copy Deadline for December G.News  
[goodnewsmagazine@me.com](mailto:goodnewsmagazine@me.com)
- 24th Arts Society lecture  
Alexander Centre, Faversham 11am

## DECEMBER

- 7th Otterden & Stalisfield W.I.  
Stalisfield Village Hall 7.30pm
- 7th Stalisfield Youth -  
Venue to be confirmed 7 - 8.30pm
- 9th & 10th Pantomime  
Stalisfield Village Hall 7.30pm
- 11th Stalisfield Carol Service  
Stalisfield Church 5.30pm
- 21st Throwley Carol Service  
Throwley Church 6.00pm
- 24th Eastling Carol Service  
Eastling Church 4.00pm



## Remembrance Service

### Throwley, Eastling, Stalisfield and Otterden

**Sunday 13th November**

Throwley Churchyard at 10.45am

The names of the fallen from our villages will be read out and wreaths laid at the war memorial, before we move into the church for the service.



## Stalisfield Village Hall Presents TREASURE ISLAND



A Villages' Production

When a map is found at the bric a brac stall marking the spot where locals buried the booty from the first ever Stalisfield Treasure Hunt, pirates from all the surrounding villages gather to discover the whereabouts of the loot.

Adventures, double-crossings and intrigue abound as they travel as far away as Eastling to find the treasure and claim the prize!

December 9th & 10th at 7.30pm

Tickets £7 (£4 children) from

01795 890415 or

[sharoncarter01@gmail.com](mailto:sharoncarter01@gmail.com)



# Message for the Month

There are more foodbanks in the UK than McDonald's outlets. Approximately 2,500 foodbanks to 1,463 restaurants.

The Trussell Trust, the UK's most extensive networks of food banks has seen demand increase by 80%. Many people are having to choose whether to eat or heat. One in five people on Universal Credit were unable to cook hot food this summer because they couldn't afford to use a cooker. 38% had to skip meals for an entire day because they couldn't afford food. The UK charity End Fuel Poverty estimates that 7 million homes will soon be living in fuel poverty. This estimate was before mortgages rose following the mini-budget.

The apostle Paul said to fellow Christians in Ephesus "In everything I did, I showed you that by this kind of hard work we must help the weak, remembering the words the Lord Jesus himself said: 'It is more blessed to give than to receive.'" Acts 20.35

Some Jews and Christians practice tithing, giving a proportion of their income to God/worthy causes. This is based on Leviticus 27. 30 "A tithe of everything from the land, whether grain from the soil or fruit from the trees, belongs to the Lord; it is holy to the Lord." 'tithe' literally means a tenth.

When I was at Sunday Morning Prayer in Lynsted Church (available on facebook) recently this idea came to me. When we go shopping, if we are able, why not

add to our list "FOOD BANK" and buy additional items, like a tithe, to help those less fortunate than ourselves? They don't need to be branded expensive items. The Faversham Foodbank lists the items they particularly need on the link below, otherwise just choose nutritional items with a long shelf life, toiletries, baby and hygiene products for your donation. There are donation points at Tesco, Sainsbury's, Morrisons and Aldi.

Our "High Downs" churches at Eastling, Stalisfield and Throwley have donation boxes for the Faversham Foodbank in Tanners Street. The remaining "Kingsdown and Creekside" Churches have boxes for the Fairshare Kent Foodbank in Ashford. There are also donation boxes at Teynham Rectory and Teynham School Go to <https://faversham.foodbank.org.uk/give-help/donate-food/> to see the specific needs for the Faversham Foodbank. The Ashford Family Foodbank is at <https://www.familyfoodbank.org/make-a-donation.html> There are also opportunities to help by donating money and volunteering. Rev'd Steve Lillicrap has vouchers and wood boxes for the Ashford Family Foodbank for those who need help.

And finally, as they say, just a couple of practical tips. A year ago I bought an electrically heated waistcoat which has three heat settings and is powered by a "power bank", which is a rechargeable battery usually used to recharge phones. It keeps me

warm! Prices start at about £30 for the waistcoat and £12 for a powerbank. This may save money on your heating and be more manageable than a hot water bottle, though I use one of them, too!

Secondly, "everyday" stamps, with the profile of the queen are being phased out and will be worthless from 1st February 2023 (this was announced in July before her death). You can google "stamp swap out form" and send these old stamps and the form to "Freepost SWAPOUT". You will get your new, replacement barcoded stamps in about a week. Alternatively you can get the form from a Post Office or ring the Royal Mail on 03457 740 740.

Every blessing to you all,  
Rev'd Jim Pye



## Saying Goodbye

Remembrance Service - Kent

Canterbury Cathedral

5th November at 11.30am

A service for anyone who has lost a baby in pregnancy, at birth or in early years, whether the loss was yesterday or 80 years ago.

This event is also for those grieving that they have never been able to conceive.

[SAYINGGOODBYE.ORG](http://SAYINGGOODBYE.ORG)

## Prayer Pointers

### November 2022

**Mondays** - Remembering the service men and women who died in service to their country.

**Tuesdays** - Give thanks for the safe delivery of newborn babies and pray those unable to conceive or mourning babies lost in pregnancy.

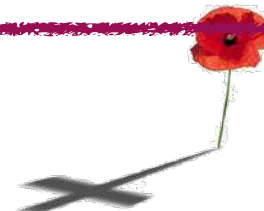
**Wednesdays** - Pray against lies and false teaching in all areas of our lives.

**Thursdays** - Give thanks for those who volunteer to help others.

**Fridays** - Pray for all we know to be in need of help.

**Saturdays** - Give thanks for the colours of Autumn.

**Sundays** - Give thanks for our freedom and pray for an end to the needless brutality of war.



## Eastling Church Flower Rota November 2022



30th Oct & 6th Nov - Di

13th & 20th - Erin and School

27th - Advent Ring

4th & 11th December - Mel

If you would like to join the flower arranging rota, please call Bay on 01795 892036.

**Eat Pray Walk**, Friday 11th November, Friday 9th December, 1.30, meet in Doddington Church car park: Our monthly walk in the countryside to gather people of all ages from different communities together. Connecting with ourselves, each other and God. Leaving refreshed and blessed.

Time spent with others in the fresh air, over a cuppa and in prayer  
ALL WELCOME



## News from Citizens Advice Swale



With the cost-of-living crisis ever in the news and our collective consciousness, it is perhaps no surprise that our Research & Campaigns team has been focussed on just that issue. As a team, we have been busy raising awareness about the extent of this crisis and what it is that needs to be done to ease the burden on our clients.

It likely will not surprise you that some of the most vulnerable in our society use more than a typical household in energy. Be it medical equipment, washing and feeding young children, or supporting elderly relatives, the extra usage by some of the most vulnerable mean that they will pay even more.

We've met with our local MPs to raise this point and, as a new project, are looking to collaborate with other local organisations to share data and speak with one, collective voice for the people of Swale, calling for more assistance to support the most vulnerable. Read more about our local and national campaigns at [www.citizensadvice.org.uk/campaigns/local-campaigns/](http://www.citizensadvice.org.uk/campaigns/local-campaigns/)

To speak to one of our advisers call Adviceline on freephone 0808 278 7979 or send an online request at <https://citizensadvice.org.uk/email-general-advice/> Alternatively drop in at 43 Stone Street, Faversham, every Friday 10am-12pm - no appointment needed.

**DAY & EVENING VENUE & ONLINE FITNESS CLASSES**  
in FAVERSHAM with Leigh Miles  
0787 343 1952  
[leigh.fitness@btinternet.com](mailto:leigh.fitness@btinternet.com)  
[www.milesdanceandfitness.com](http://www.milesdanceandfitness.com)

### Holistic Therapies by Ben Barnett

- 28 years experience providing & teaching Holistic Therapy
- Hydrotherm Massage on a warm water mattress, face up 3D access to back & neck, no face holes or laying on front
- Work with mind & body to effect conditions such as back pain, neck pain, shoulder issues, sports injury, work stress
  - Combines soft tissue massage, stretching and guided visualisation
- Auricular Acupuncture for sciatica, hay-fever, quitting smoking, balancing hormones & detox
  - Qualified & experienced in pregnancy massage & working with clients with cancer
  - Garden Clinic situated in the tranquil village of Eastling
    - Prices start from £50

T: 07740 557 555  
E: [helo@benbarnett.co.uk](mailto:helo@benbarnett.co.uk)  
Fb: @HTbyBB

## Christmas Trees 2022

With your great support, last year we raised £9,165. These donations are given to over 40 local parish churches and 20 charities.

We have a very good selection of Christmas trees available of many varieties, shapes, colours and aromas, between 5 and 12ft in height. We also have some up to 16ft - ideal for schools, churches, village halls and outside spaces. Since we started this fundraising scheme 30 years ago, the procedure is the same: you can visit to choose your tree from late September, and return to collect it in December nearer Christmas.

As before, the arrangement is for you to make a donation for your tree; over half will be returned to your Parish church and the rest goes to the 20 charities. This is a great chance for you to raise funds for your Parish church and some deserving charities at the same time.

Please get in touch with us to book a time and date to come to choose your tree, by emailing, texting or phoning. (Please postpone your visit if you have covid or suspect you have it). Email [nashsfarmhouse@btinternet.com](mailto:nashsfarmhouse@btinternet.com)  
Landline 01795 532596. Mobile 07910 248 308  
Many thanks for your support  
Peter and Alison Howard  
Nashs Farmhouse, Luddenham, Faversham ME13 0TQ

### Wild Thyme Catering Services

Organising a Christmas party?  
 Need catered canapes for a crowd?  
 Want help stocking the freezer for weekend guests?  
 Arranging a children's birthday party?

Delicious home cooked food to order  
For all your catering needs: Phone Anna Blunt 07817 872497  
Email: [annabluntathome@gmail.com](mailto:annabluntathome@gmail.com)

**//M & J ELECTRICAL KENT**  
Domestic & Commercial

Marcus Hammond

Tel: 01795 473959  
Mob: 07592511612

Email: info@mandjelectricalkent.co.uk



**GARDEN CLEARANCE**

**No job too small.**

Mowing, strimming. Trees topped/removed.  
Fences and gates erected.

For a free quote call

Nick Swatland **01795 886814**

mobile 07713 766141

**theLeap Hypnotherapy**



Catherine Scarlett BA(Hons), AFHEA, HPD  
07887 350613 - cscarlett9@aol.co.uk

Help with -

Anxiety, Depression, Phobias, Sleep,  
Smoking, Weight Loss etc.

**Christina's Mobile Hairdressing**

Weddings & special occasions catered for  
27 years experience

Mob: 07894 524166

Email: Christinanorcott@gmail.com

A stylist who cares



**Barnie's Sweeps**  
Professional Brush & Vacuum Chimney Sweeping Service for Open Fires and Wood Burners  
**Clean Efficient Service**  
Institute of Chimney Sweeps Trained and Fully Insured  
**Certificate Issued after Sweeping**  
For Further Details please call Berni on 01795 581755 or 07751 109300  
Visit me at [www.barniessweeps.co.uk](http://www.barniessweeps.co.uk)



**Pest Control Services**



Rats, Mice, Wasps and  
Bee Swarms removed

Discreet & Prompt Service

Local Tradesman

Contact Andy Pink

01622 884774 / 07761 559 744



1998  
Celebrating  
**20 years**  
2018

[www.roots.uk](http://www.roots.uk)

We specialise in the **design, supply and installation** of complete **kitchens, bedrooms and bathrooms**. Our **fully managed service** includes all skilled trades right through to final decorating. Discover more at [www.roots.uk](http://www.roots.uk) and visit our showroom. Roots. For your forever home.

Showroom open Mon-Sat 9am-5pm 01227 751130  
Vine Farm, Boughton-under-Blean, Faversham, ME13 9AB

**Mathew Winslade**  
Your local village Chimney Sweep



*Keeping real fires safe.*

Fully insured and a member of the  
Institute of Chimney Sweeps

If you need a chimney sweep or any other chimney service please get in touch

2 Kettle Hill Eastling Kent ME13 0BB

[www.yewcottages.com](http://www.yewcottages.com) [yewcottages@outlook.com](mailto:yewcottages@outlook.com)

07748 912530

01795 890904



**Exceptional quality companionship and care at home**

Inspected and rated

**Outstanding** ☆



Bespoke Later Life Support

Website: [www.nplh.uk](http://www.nplh.uk)

Email: [info@nplh.uk](mailto:info@nplh.uk)

**01795 597983**

Local area service  
Personalised approach  
Dementia expertise  
Professionally trained

**RELIABLE & PROFESSIONAL SERVICE AT REALISTIC PRICES BY CERTIFIED ENGINEERS**  
WE COME TO YOU!

**JKF Computer Services, Est 2000**

- PC Repairs, Upgrades & Rebuilds
- Virus Detection and Removal
- PC's Built To Your Specification
- On- Site or Workshop Repairs
- Hardware & Software Troubleshooting
- Computer Installation & Maintenance
- Spyware Detection & Removal
- Collect and Return Service as needed
- Data Recovery and Backup
- Small Business or Home Networks

**CALL US ON 01795 531623 or 01227 290131 / Mobile 07880 602823**

**JM WEBSTER**

PLUMBING AND HEATING SERVICES  
OIL TANK INSTALLATION AND INSPECTIONS  
OIL GAS LPG

INSTALLATION SERVICE AND REPAIR  
BATHROOMS AND GENERAL PLUMBING  
OFTEC AND GAS SAFE REGISTERED

[jimwebster5778@btinternet.com](mailto:jimwebster5778@btinternet.com)

**07971 589 019**



North Downs

**YOUR LOCAL BOILER MAN**

Call or email for boiler services and repairs



[northdownsgas@outlook.com](mailto:northdownsgas@outlook.com)

**07969 084 665**



# My Journey to Readership

by Pim Baxter

On Sunday 25 September 2022 I was licensed as a Lay Reader at Canterbury Cathedral by Bishop Rose. It was the culmination of two years of study at St Augustine's College of Theology, and the beginning of the next stage of the amazing journey I have been on since early 2020 when I first asked Steve if I could explore with him the possibility of training to be a Lay Reader. It was something I had been considering for some time.



The garden at St Augustine's

The College is in West Malling and shares the site with a community of Benedictine sisters who look after the beautiful grounds around the Abbey. As soon as you walk through the gate into the gardens it is easy to feel God's presence. It was a privilege to spend time in such a tranquil and spiritual place and worshipping in the Pilgrim Chapel was a joyous experience.

Teaching during the first year was all on Zoom, but when restrictions were eased, I would visit the College Library and often come face to face with someone I had only seen in a tiny square on a screen. Although we were wearing masks there was always a moment of recognition and an opportunity to catch up with a fellow student, one of the tutors or the wonderfully supportive administrative team.

The College is also based at Trinity House in Southwark and at the beginning of our second year in September 2021 there was for a day school for all students, including ordinands. We all arrived early and were waiting outside for Trinity House to open. It was an emotional - and noisy! - moment as everyone spotted fellow students from their tutorial groups, or who they had planned online services with, meeting them in person for the first time.

Friendship is a blessing (Proverbs 17:17). Reflecting on everything I have appreciated during the past two years; the gift of friendship is indeed a blessing. There were six of us in 'the Canterbury cohort', students from the Canterbury diocese training to be Readers. From our first virtual meeting we gave each other encouragement, agonised over the approach of essay deadlines, laughed a lot and shared and deepened our faith, often praying together.

Students were required to do a parish placement somewhere different from their own church experience. I spent mine at St Alphege, Seasalter, which one of the team described to me as being soft evangelical. There were many 'firsts' for me, including worshipping in a purpose-built church, part of the thriving Seasalter Christian Centre. I soon felt at home in this bright airy space, full of God's love and great energy, and made to feel welcome by the ministry team and the congregation.

As Readers in training, we rely on fellow worshippers in our parishes



to give constructive feedback after leading or preaching. They are all busy people and it's just something else to ask them to fit in. I am blessed to have had so much encouragement from many wonderful people, family and friends, the ministry team, especially Steve as my Supervising Minister, Norman Fowler a great inspiration to me as I watched his own journey as a Reader and Caroline Ramshaw, always helpful and happy to answer questions, and above all Andrew, who has been amazingly supportive and patient!

Over our licensing weekend the Canterbury cohort spent time with Nigel Collins, the Warden of Readers, and with Bishop Rose reflecting on our spiritual journeys, and the path God was leading us forward on. This time was very special, preparing us for the moment we became Licensed Lay Ministers.

Thank you so much to everyone who came to the service, and who watched online, it meant a great deal. I am looking forward to continuing to develop as a Reader, here in our High Downs Parish as well as throughout the Benefice.



# Christmas Party

## Stalisfield and Otterden Seniors

Stalisfield Village Hall  
Sunday 18<sup>th</sup> December from 4pm

Stalisfield is pleased to announce the annual seniors' Christmas event will be taking place on Sunday, December 18<sup>th</sup> from 4pm. A welcome drink followed by full Christmas dinner will be enlivened by Christmas carols. Any contributions to the usual raffle would be appreciated. It would be great to see a few more of the "just eligible" guests so send an email to Anna [anna@stalisfieldvillagehall.co.uk](mailto:anna@stalisfieldvillagehall.co.uk) or call her on 01233 712 918

Places **MUST** be **pre-booked** with **ANNA**



## CHILDREN'S CHRISTMAS PARTY

Stalisfield Village Hall  
Saturday 17<sup>th</sup> December  
12.30pm to 3.30pm



The children of Stalisfield, Otterden and surrounding areas are invited to the Hall for the Annual Christmas Party. From littlies to biggies, every child is welcome. There will be food and drink aplenty, games galore, and maybe a surprise visitor .....Please register with Debbie at [watlingdebbie@hotmail.com](mailto:watlingdebbie@hotmail.com) or on 07926 275 697. The more the merrier...

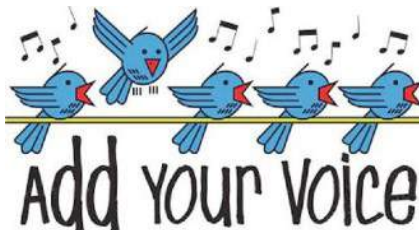


## Throwley Church Choir: looking for additional singers

We are happy to accommodate all voices, though some additional male voices would be most welcome. The ability to read music whilst useful is not absolutely essential. We always aim to enjoy singing together.

We sing at the annual Remembrance Service and will be taking part in this year's Carol Service in Throwley on 21st December.

Please get in touch if you are interested in joining us: email David Elvin at [davidjelvin@gmail.com](mailto:davidjelvin@gmail.com)



## Eastling Christmas Choir

In preparation for our Christmas Eve Carol Service, choir practices will be on Sunday evenings, 5 - 6pm From 20th November . All voice parts welcome. Andrew Baxter 01795 890598

## The History and Restoration of the Paddle Steamer Medway Queen

'Heroine of Dunkirk' - This lecture will cover her whole history from her build in 1924 up to the present day. She is normally berthed at Gillingham Pier and open for visits on Saturdays.



Speakers: **Mark & Pam Bathurst**  
When: **10th November 2022**  
Where: **Parish Hall, Station Road**  
Time: **7.30pm doors open**  
Talk starts promptly at 8pm



CHARING & DISTRICT LOCAL HISTORY SOCIETY  
[www.charinghistory.co.uk](http://www.charinghistory.co.uk)



## Join us for 'Trees of Love 2022 to remember your loved one this festive season

Dedicate a beautiful dove to be placed on the illuminated Trees of Love, and let your memories shine throughout the festive season. Then join us for carols, mulled wine, hot chocolate and warm mince pies at our hospices and alternative indoor venues.

Outdoor services at Pilgrims Hospices: Canterbury, Thanet and Ashford on Saturday 3rd December, 5pm  
Charing Crematorium, Friday 16th, 4.30pm  
[www.pilgrimshospices.org/treesoflove](http://www.pilgrimshospices.org/treesoflove)  
01227 782062

## 'Happy times with old songs, tea & chatter'



Come and join us in singing for fun on Thursday afternoons: 10<sup>th</sup> November & 8<sup>th</sup> December from 2pm - 3pm at Newnham Village Hall £5 per person pay-as-you-go  
Enquiries to Lissie on 07790 287878 or email [lissiebayford@gmail.com](mailto:lissiebayford@gmail.com)  
These are particularly aimed at our elderly folk and suitable for people with early-stage dementia.

## Sunday Services

### 30th October All Saints Day

Ephesians 1. 11 - 23, Luke 6. 20 - 31

Newnham 10.30am Benefice  
Communion

### 6th November Third before Advent

2 Thessalonians 2. 1 - 5, 13 - 17, Luke 20. 27 - 38

Eastling 10.30am Holy Communion  
Norton 10.30am Morning Worship

### 13th November Remembrance Sunday

Revelation 21. 1 - 6a, Luke 1. 68 - 79

Eastling 9am Holy Communion BCP  
Throwley 10.45am Remembrance  
Service

### 20th November Christ the King

Colossians 1. 11 - 20, Luke 23. 33 - 43

Newnham 9am Holy Communion BCP  
Eastling 10.30am Morning Worship

### 27th November Advent Sunday

Romans 13. 11 - 14, Matthew 24. 36 - 44

Throwley 10.30am Holy Communion  
Newnham 10.30am Morning Worship

### 4th December Advent 2

Romans 15. 4 - 13, Matthew 3. 1 - 12

Eastling 10.30am Holy Communion  
Norton 10.30am Morning Worship

\*\*\*\*\*

## Online Daily Worship Continues

As well as the services in our churches, the daily  
9am Morning Prayer at Lynsted and Sunday  
Breakthrough at 6pm, will continue and be live  
online on <https://kc-hd.org.uk>.

More information is updated weekly on  
St Mary's Eastling 'A Church Near You':

<https://www.achurchnearyou.com/church/11982/>

## High Downs Parish

**Rector** Reverend Canon Dr. Steve Lillicrap  
01795 522510 [steve.lillicrap@kc-hd.org.uk](mailto:steve.lillicrap@kc-hd.org.uk)

**Associate Priest** Reverend James (Jim) Pye  
01795 890726 [jim.pye@kc-hd.org.uk](mailto:jim.pye@kc-hd.org.uk)

**Curate** Reverend Caroline Turvey  
01795 886351 [caroline.turvey@kc-hd.org.uk](mailto:caroline.turvey@kc-hd.org.uk)

**Reader** Caroline Ramshaw (07799 538809)

**Anna Chaplain** Caroline Ramshaw  
[AnnaChaplaincy@outlook.com](mailto:AnnaChaplaincy@outlook.com)

**Reader** Pim Baxter (07710 116269)

### Church Contacts

**Eastling** Andrew Baxter, Warden (01795 890598)

**Administrator** Janet Payne  
E mail: [eastlingchurch@gmail.com](mailto:eastlingchurch@gmail.com)

### Stalisfield with Otterden

Jenny King, Warden (01795 890366)

**Administrator** Shirley Pritchard  
Email: [Stmarystalisfield@gmail.com](mailto:Stmarystalisfield@gmail.com)

**Throwley** Alison Young (01795 890213)

**Parish Office** Email: [eastlingchurch@gmail.com](mailto:eastlingchurch@gmail.com)

[facebook.com/highdownsbenefice](https://facebook.com/highdownsbenefice)

\*\*\*\*\*

## From The Registers

### Funerals

Dorothy Murray

12th October 2022 at Otterden

Carolyn Clarke

21st October at Barham Crematorium

\*\*\*\*\*

### CONTACT THE GOOD NEWS EDITOR

Hilary Harlow 01795 890338

If you would like to submit articles, or to advertise in  
the December 2022 magazine, send your submission  
by 20th November to: [goodnewsmagazine@me.com](mailto:goodnewsmagazine@me.com).

Past and current issues of the Good News may be  
viewed on [www.goodnews.rf.gd](http://www.goodnews.rf.gd)

### Anna Chaplaincy

Please contact our Anna Chaplain, Caroline Ramshaw, if you know  
of someone who is isolated, alone, or unable to attend church.

An Anna Chaplain can offer a listening ear and company.

Communion can be brought to you in your own home.



Contact your local Anna Chaplain on:

[annachaplaincy@outlook.com](mailto:annachaplaincy@outlook.com)

07799538809

## Next Month

### LYNSTED CHURCH

### Remembrance service

### 13th November

### 10.40am



## See you then!



THE ARTS SOCIETY  
EGERTON



The Arts Society  
brings people  
together through a shared  
curiosity for the arts  
FROM RESTORATION TO  
REFORMATION -  
THEATRE FROM CHARLES II TO  
DAVID GARRICK  
Presented by MALCOLM JONES

Wednesday 9<sup>th</sup> November, 2.30p.m.

at THE MILLENNIUM HALL, EGERTON TN27 9DS

Theatres had been officially closed for 18 years under the puritan Government when Charles II returned to England and re-opened the playhouses. Restoration Theatre reflected the explosion of immorality and freedom associated with the restoration. Fun though it was Theatre became ill-disciplined and a place respectable people would not go. Over the next 100 years actors and managers like David Garrick sought to create a professional and artistically respected art form.

Malcolm Jones: was Workshop and Events manager at the V&A Theatre Museum, Covent Garden. Lectured at drama schools including RADA, The Actors Centre and Rose Bruford College. Malcolm lives in Charing Heath.

For further details about this and other lectures visit our website at <https://theartsocietyegerton.org.uk>

Visitors are always very welcome at £5, refunded if you join. A year's membership, including 10 lectures and Arts Society magazine, costs just £40 (£70 for couples). For further information please contact Christine Willis, our Membership Secretary via [cmwillis75@gmail.com](mailto:cmwillis75@gmail.com) or 01233 756377.

## The Arts Society Faversham



We run regular monthly lectures on the fourth Thursday at the Alexander Centre, Faversham. Subjects cover all aspects of the Arts in its widest sense and are given by experts in their chosen field and include university lecturers, broadcasters and tour guides. Come along to a lecture as a guest (£5 fee) or join for a year's lectures.

Our next lecture is on the 24<sup>th</sup> November 2022 at 11.00am on

**The History of Pantomime** by Giles Ramsey. Coffee and biscuits will be served from 10.20am

Over 2500 years in the making the great British pantomime is a very potent brew indeed. Mix the earliest Greek and Roman drama with commedia dell'arte and medieval morality plays, then stir in a sprig of C17th masque, a dash of C18th harlequinade and a hefty shot of Victorian music hall and, hey presto, you have the modern Christmas pantomime. (Oh no you don't!)

### Biography

Giles Ramsay is an independent theatre director, a Founding Director of the charity Developing Artist, a Fellow of St. Chad's College, Durham University and Course Leader in Theatre at The Victoria and Albert Museum in London. He has run theatre projects in Botswana, Cape Verde, Equatorial Guinea, Kenya, Kosovo, Palestine, Mexico, Thailand and Zimbabwe and regularly lectures on the history and practice of theatre on the Queen Mary 2 as it sails from New York to the UK. Giles combines academic analysis with hands on experience to bring a unique insight to the world of the theatre.

For more information contact us at [info@theartsocietyfaversham.org.uk](mailto:info@theartsocietyfaversham.org.uk)

## Otterden and Stalisfield W.I.

The Speakers for our October Meeting were very 'W.I.' Edna, who is a Member of Harrietsham W.I., and her daughter Anna came along under the banner of Sugar and Spice Homemades to tell us about how they set up their successful business, run from their home. You can't get more W.I. than the jams and preserves that they produce! Starting off in a small way, selling at Farmers Markets, they are now supplying various shops who like to sell homemade produce. Biddenden Vineyards asked them to produce a Chutney to include their cider with ingredients to compliment the taste. Local farms supply them with their fruit and vegetables needed, particularly when there is a glut of any produce. They also make Christmas Puddings in three delicious flavours. One shop put in an order for 400 which put them in a bit of a panic, but they managed to fulfill the request! We were then able to test all the lovely different jams, preserves, sauces and Christmas Puddings, which went down well with everyone. From the number of purchases it was a successful evening all round.

Moving on from food, our Meeting on Wednesday 2nd November will be covering drink - Gin!

Katherine Hook will be coming to give us a tempting evening of sloe gin products titled 'Sloe Seduction'. Something else to stock up with for Christmas?

If you wish to come along to our Meetings at Stalisfield Village Hall, starting at 7.30 p.m., please contact President Helen Brooks on 07477580727 or Secretary Ellie Cameron on 01795 892016.



### EASTLING VILLAGE HALL

To book ring Annie on  
07754 114670

Email: [Jacksonandadams@btopenworld.com](mailto:Jacksonandadams@btopenworld.com)

[www.eastlingvillagehall.co.uk](http://www.eastlingvillagehall.co.uk)

A beautiful hall in a lovely village location for your wedding, club, sports or meetings.

The large hall has pretty grounds, car parking, meeting rooms and fully equipped facilities for professional or self-catering occasions.





Canon Paul Hardingham considers our new monarch.



## King Charles III

*'And wherever you may live in the United Kingdom, or in the realms and territories across the world, and whatever may be your background or beliefs, I shall endeavour to serve you with loyalty, respect and love, as I have throughout my life.'*

These are King Charles III's words from his TV broadcast following the death of Queen Elizabeth. They reflect the Queen's own commitment to serve the nation for 70 years. They also express the continuity of monarchy: 'The Queen is dead. Long live the King!'

However, continuity doesn't mean that things remain the same. King Charles III will face different challenges to the Queen, but the same God works His purposes through each of them. At his death, King David spoke these words to his son Solomon: 'Be strong

*and observe what the Lord your God requires: walk in obedience to him...Do this so that you may prosper in all you do and wherever you go.'* (1 Kings 2:2,3) These are words for our new King and ourselves, as we seek God's will in a time of uncertainty.

King Charles III has demonstrated his ability to get alongside people to 'see the value of each person as God sees them.' (Archbishop of Canterbury). He is also in touch with the important issues of the day. He has provided young people with opportunities to change their lives. He understands the life of the poorest in our society, and he is passionate about the state of our planet. Let's pray for our king, as he faces new challenges and opportunities: *'I urge, then, first of all, that petitions, prayers, intercession and thanksgiving be made for kings and all those in authority, that we may live peaceful and quiet lives in all godliness and holiness.'* (1 Timothy 2:1,2).

# DELECTABLE EDIBLES



**CATERER  
& CAKE MAKER  
FOR ALL OCCASIONS**

Near Faversham, Kent

Contact: Charlotte 07803204614

Email: shattuckcharlotte@gmail.com

Instagram: delectable\_edibles01

Facebook: Delectable Edibles



Just up in Stalisfield; we are a family run, independent, awarding winning, fine dining pub & restaurant with outstanding bedrooms.

**We are currently recruiting for**

- **Casual waiting & bar team members (evening & weekends)** includes holiday pay + tips
- **Casual cleaners for our bedrooms (midweek & weekends)** includes holiday pay
- **Casual pot wash (weekends)** includes holiday pay + tips

**Some previous experience is ideal, but willingness to work & a good personality is essential we can teach you the rest!**

**Also great opportunity for full time manager!**

(previous experience in the industry required)

Please send your CV to [info@theploughinnstalisfield.co.uk](mailto:info@theploughinnstalisfield.co.uk)



## Wags & Tales



**Professional**

**Home from Home Dog Boarding**

also Doggy Day Care

and animal taxi now available, safe and comfortable transport for your pets

**Fully Insured, Enhanced DBS Check  
Canine first aid course.**

Also **Dog Walking** service for the surrounding areas.

For more details please contact:

Trudie on 01795 890114

or 0771 4455 769

## **Southern Cesspool Services**



*Tank Emptying  
Treatment Plant Servicing and Jet Washing  
Regular Empties  
Clean Quick & Efficient  
British Water Accredited*

01233 646767 / 732407  
07773 491356

[www.southerncesspoolservices.com](http://www.southerncesspoolservices.com)

**We Pride Ourselves On First Class Service**



**always there for you**

EaziHealth is a UK registered online pharmacy with a focus on healthcare and customer service

### **Our services**

- Erectile dysfunction, Emergency contraception
- Free delivery service
- NHS repeat prescriptions
- Private prescriptions
- Stop Smoking
- Video Consultations
- Weight Loss Management

### **Our contact:**

Telegram & WhatsApp: 07761313828

Tel: **01227 913 444 / 01795 597801**

**Unit C The Market Place, Brogdale Farm  
Brogdale Road Faversham  
ME13 8XZ**

[www.eazihealth.co.uk](http://www.eazihealth.co.uk)



**Treat your Feet**  
FOOTCARE

Nail cutting, corns and callus, fungal foot and nails, verrucas, ingrown toenails and care of the diabetic foot

**Rebecca Lapslie**

MCFHP MAFHP

Foot health professional

Home visits

**01795 486849**

**07734 698792**

## Kent County Councillor's Report

### Bus Subsidies

One of the biggest campaigns I've been focussing on this year has been trying to overturn KCC's proposed cuts to bus subsidies. If they go ahead, these cuts will have a hugely damaging effect on mobility across large parts of Swale East, especially in Newnham, Doddington, Lynsted, Rodmersham, Bredgar and Tunstall, who all face being left without any regular bus service. After my successful call in to the KCC Scrutiny Committee, the issue will be debated for the final time at the full council meeting on the 20th October. Unfortunately at the time of 'going to press', that meeting is yet to take place, so I will provide a further update on the situation next month.

### Winter Fuel Crisis

Another big issue facing many of us currently is the combined cost of living/winter fuel crisis. Over the past few weeks I have started talking to some of the local parish councils about responses to these crises. Some parishes are hoping to set up warm banks (or 'warm hubs') where people can go to stay warm during the day, and in some areas I have supported this with money from my members grant fund.

I feel it's important to try and ensure that anyone visiting a warm hub or any other public space to stay warm is aware that they should not turn their thermostat down too far while they are out. The BBC reported this week that doing so would increase the chances of damp and mould developing in homes which are allowed to get too

cold, which would in turn will lead to greater problems. My understanding is that keeping thermostats at a minimum of 16c is ideal. This will also ensure that you can more easily bring the temperature back up when returning home.

In addition to warm hubs, I have arranged for an organisation called Green Doctors to visit some of the parishes across the area in early December. They will be holding five drop in sessions to give advice and energy saving tips. They can also be booked for home visits to offer further, tailored support to residents on reducing energy bills and managing fuel debt.

The sessions will take place at the following locations (I will provide a reminder next month)

#### Thursday 8th December

9.30am to midday – Newnham Village Hall

1.30pm to 3pm – Venue TBC

3.30pm to 5pm – Oare Village Hall

#### Friday 9th December

9.30am to midday – Teynham Community Hall

2.30pm to 4.30pm – Boughton Village Hall

More information on Green Doctor can be found at <https://www.groundwork.org.uk/greendoctor/>

I will also be available at all of these sessions, so please feel free to come along if you have any other local issues you'd like to talk to me about.

Rich Lehmann

[rich.lehmann@kent.gov.uk](mailto:rich.lehmann@kent.gov.uk)

<http://kentgreencouncillors.news/>

## Eastling Neighbourhood Watch



### Village Warden

07794 010 394 or 01795 890848

### Police 101 Emergency 999

There have been reports of persons with vehicles touring the area shooting and using catapults to facilitate their crime of poaching. This is not only against the law but is highly dangerous towards any person out walking. If seen please do not hesitate to call the police or give me a call.

There has been concern seeing quite a large police presence within our area over a period. They have been searching for a missing person from the village who, as at time of going to print, has not been found.

We are now entering the breeding time for livestock and all dog owners, of which I am one, are reminded that they must keep their animals on a lead in the vicinity of livestock. As I have mentioned before a farmer has the legal right to shoot any animal attacking or worrying their livestock.

Have a good month and take care  
Alan.

## Plasterer

P.Hadley

All aspects of plastering covered

18 years experience

- Ceilings or Walls, Old or New
- Lime Plastering & Heritage Work
- Plaster Boarding
- Over skimming of Artex
- Tiling
- Property maintenance

No job too Large or Small

Friendly Clean and Reliable Service

For a no obligation free estimate or advice call Paul on

**Ospringle 07740 530426**

## A D Pink Electrical

All types of domestic electrical installations undertaken, from full rewires to single sockets.

Garden and security lighting.

Landlords' Electrical Safety

Certificates. Fully insured

NICEIC Part P  
Domestic Installer



Local Tradesman

Tel: 01622 884774

07761 559 744

Email: [andypink1@aol.com](mailto:andypink1@aol.com)



Conveyancing  
Quality

thorneloe & co

SOLICITORS • SINCE 1989

Now part of Hallett & Co

01622 859 416

[lenham@hallettandco.co.uk](mailto:lenham@hallettandco.co.uk)

[www.hallettandco.co.uk](http://www.hallettandco.co.uk)

St Mary's House, The Square  
Lenham, Kent ME17 2PH

Authorised and regulated by the Solicitors  
Regulation Authority Registered No. 50485



*This piece is written by Dr Ruth Banciewicz, who is based at The Faraday Institute for Science and Religion in Cambridge. Ruth writes on the positive relationship between Science and Christian faith.*

## Wonder and Worship

“I was travelling, and out early in the morning: at first there was a vast fog; but, by the time that I was seven or eight miles from home towards the coast, the sun broke out into a delicate warm day. We were then on a large heath or common, and I could discern, as the mist began to break away, great numbers of swallows (*hirundines rusticae*) clustering on the stunted shrubs and bushes, as if they had roosted there all night. As soon as the air became clear and pleasant they all were on the wing at once; and, by a placid and easy flight, proceeded on southward towards the sea”.

How many church leaders today have time to enjoy their surroundings? Gilbert White was a vicar who became famous for his observations about the flora and fauna of his parish. His letters about the local wildlife through the seasons were so beautifully written that they are still in print today, more than 200 years after they were first published as *The Natural History and Antiquities of Selbourne*.

White is a great example of someone who saw science and faith in harmony. He writes that he hopes his readers will be inspired to “pay a more ready attention to the wonders of the Creation”. His stories are often so vivid that he gets away with packing in quite a bit of scientific detail, painting a more accurate picture of the wonderful events he observed as he travelled around the countryside. White’s book is one of the classics of nature writing, and there’s even an apocryphal story online that this is one of the most printed books in the country, after the Bible and Shakespeare.

White may have been one of those people with a capacity for endless activity, or perhaps he took rather more care over natural history than his vocation. Either way, I do think that anyone - from the parish priest to the youngest member of the congregation - could learn from his appreciation of creation. It is well worth spending ten minutes every now and again staring into a bush, pond or tree - especially in winter when it’s easy to hurry indoors and put the kettle on. Experiencing wildlife first-hand is wonderful fuel for our worship of God and care for His creation. As Psalm 111 says, “Great are the works of the Lord; they are pondered by all who delight in them” (NIV).

\*(White’s book can be downloaded for free at <http://www.gutenberg.org/ebooks/1408>)

## The Poet and the Woodcutter

by Audrey Keen



### Why?

Mystery lingers in the sleeping trees

The branches are crooked, why?

And, how can a sun that gives such light Just disappear from the sky?

Why are the oak leaves brown and damp; Why does the short grass fade?

Why does the fog seal the wood on all sides And of what are the snowflakes made?

Why should the blackbird want to sing; Why do the woodrooks call

And why has God made the big grey cloud Blown by a wind so raw?

### Reply:

Indeed mystery lingers and it should be so But does the wood really sleep?

For even in winter if we look really close The baby buds there peep.

The branches are crooked, this is a fact And nature was right to design

A furrowed bough that twists Instead of a straight and broad brown line.

The sun in truth does disappear But only behind the grey,

Of mischievous cloud that collects the snow Which falls on us this day.

The fog is a nuisance that must be endured But it’s presence I can explain,

For when calls together the mists They form a grey veil again.

The oak leaves are brown and the oak leaves are damp

For the winter renders them so, And the grass that fades for lack of sun

In spring will brighten and grow. Snowflakes are made from the gathering

cloud

That rolls above the hills,

While the snow comes to pattern the skeleton trees

With cambric like covers and frills.

The blackbird sings to arouse the dawn And such pleasure he gives to us all.

But only the woodrook would know why a woodrook

Repeats his rustic call!






YOU ARE INVITED TO A

# LIGHT PARTY

on  
MONDAY 31<sup>ST</sup> OCTOBER

AT LYNSTED CHURCH  
PRE-SCHOOL AND PRIMARY CHILDREN 4.00 TO 5.30 PM  
YEAR 7 ONWARDS 6.00PM TO 8.00PM  
Dress code: Bright Colours.  
There will be Music, food, games and craft.

Entry is free but call or text Francette on 07929511596 to book or using these QR code  
For Primary school and preschool For secondary school




## Autumn Term 2022

Wednesdays 7.00pm to 8.30pm  
Years 7 to 13

14th September  
 28th September – Artist visiting the group  
 12th October  
 26th October – NO GROUP TONIGHT – half term  
 9th November – Glo night neon disco – invite a friend along  
 7th December – Location to be confirmed  
 21st December – Christmas party

**contact:**  
[clnwood@doctors.org.uk](mailto:clnwood@doctors.org.uk)  
 for more details

  
 Supported by  
  
 Kent Children and Young People

**Light Party**, Lynsted Church, Monday 31st October: the fun and safe alternative to Halloween. All pre-school and primary children welcome for craft, food, singing and games from 4.00-5.30pm. Secondary children welcome from 6.00-8.00pm. Please register on our website: [Light Party- Registration \(Pre school and primary\) | Kingsdown Creekside & High Downs | ChurchDesk](#) OR [Light Party- Registration \(Secondary\) | Kingsdown Creekside & High Downs | ChurchDesk](#)

## Buddies

for pre-school children and their adults

Doddington village Hall  
9.00-10.30am  
Term time only

**Buddies:** The Parent and Toddler group to which all are invited. If you'd like to meet up with other parents in your area in a safe space, over coffee, snacks, singing, play and story time, come along on Friday morning to Doddington Village Hall between 9.00 and 10.30am. If you have some spare time and don't have a little one to look after, would you be able to bake a cake, or make coffees and teas, or give the parents a warm welcome? Please contact [caroline.turvey@kc-hd.org.uk](mailto:caroline.turvey@kc-hd.org.uk) if you would like to help out.

### THE COMING OF A KING

The birth of Jesus is retold

God sent a messenger to Mary  
What was the angel's name?  
\_\_\_\_\_

Luke 1:26-28

Mary was frightened,  
what did the angel say?  
Luke 1:30

What was Mary to name her child?  
\_\_\_\_\_

Luke 1:31

What is her son going to be?  
Luke 1:32-33

What does the angel say about God?  
Luke 1:37  
(LEARN this verse)

Mary praises God, what does she say God has done?  
Luke 1:46-55

What happened to Elizabeth when Mary went to visit her?  
Luke 1:41

Find the words in the word search and the \_\_\_ words too.

E	T	H	O	L	Y	S	P	I	R	I	T	O	J	S	K	S
M	B	H	C	B	I	G	T	W	L	B	Z	L	O	R	D	A
E	L	O	H	P	R	A	I	S	E	O	J	E	S	S	V	
S	E	L	I	Z	A	B	E	T	H	R	O	N	E	P	D	I
S	S	Y	L	K	W	R	E	I	G	N	E	T	P	M	E	O
A	S	C	D	I	K	I	N	G	D	O	M	P	H	A	B	U
G	E	S	O	N	R	E	J	O	I	C	E	W	O	R	D	R
E	D	A	N	G	E	L	Z	D	O	A	B	A	B	Y	L	U

ANGEL • MESSAGE • GOD • JOSEPH • MARY • BABY • SON • BORN  
 CHILD • THRONE • KING • REIGN • KINGDOM • HOLYSPIRIT • LORD  
 HOLY • WORD • ELIZABETH • BLESSED • SAVIOUR • REJOICE • PRAISE