

## Y- Generation Youth Club

Eastling Village Hall  
Sunday Nights 6.30-8pm  
Year 7+

Contact Joy Faulkner for more information or if you want to help on 07999 807 519



## Eastling Angels Girlie Cell Group

Where:  
The Wiltons, Newnham Lane  
When:  
Friday Nights 7.00-8.00  
A time for Girls 12+ to find out about themselves, God and the world around them!  
Contact Joy on 07999807519 for more details.

## FRIENDS OF EASTLING SCHOOL

All the children made splendid apple pies and crumbles during the week leading up to 'Apple Pie Day'. This raised £85 which will be sent to the NSPCC.

Eastling School **2007 Tea towels** are still available for anyone who has forgotten to purchase one - £3 each or 2 for £5. Please contact me via the school office.

The school Halloween Disco on 19th October was a great success with some wonderful costumes!

Don't miss the **Rural Food Fair** on Sunday 4th November at Eastling School 11am to 3pm. Free entry. More details on front cover.

The **Jumble Sale** will be held on **10th November in Eastling Village Hall at 1pm.** Jumble can be brought to the hall on Wednesday 7th November, Friday 9th or from 10am on Saturday 10th. Any offers of help to sort and sell would be gratefully received.

Jill Seaman, FOES Publicity  
Jill.b.s@hotmail.co.uk, 01795 890252

## S Club

meets in  
Eastling Village Hall  
Sunday 18th November,  
10am.

All primary school aged children welcome

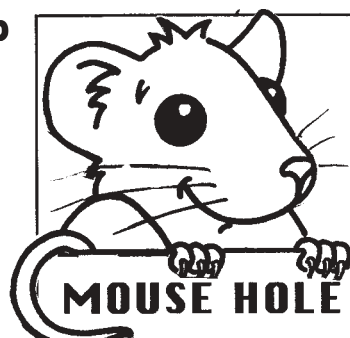
## TOY SERVICE

Eastling Church,  
Sunday 25th November,  
10am. All Welcome



## Craft Club

November  
9th & 23rd  
6.15 - 7.15pm  
Champion Hall,  
Painter's Forstal.  
50p a session.  
Contact number  
532756.



## MOUSE HOLE

### Pick-up Sticks

'Pick-up Sticks' is a game that's been played for hundreds of years. You can make your own Pick-up Sticks from a packet of wooden skewers, or for a miniature set, use a box of wooden cocktail sticks. Colour the sticks different colours, with felt pen or paint, to represent a different number of points. e.g. green = 5 points blue = 10 points red = 15 points yellow = 20 points.

**To play the game:** With the sticks in your hand, let them drop into a pile on the table. Choose a stick from the pile and try to remove it without moving the others. If successful, keep it and have another go, if not, then let someone else play. The person with the most points wins!

**The Man in the Tree**  
With Jesus passing through the town,  
A crowd of people gathered round,  
But as Zacchaeus couldn't see,  
He ran ahead and climbed a tree.

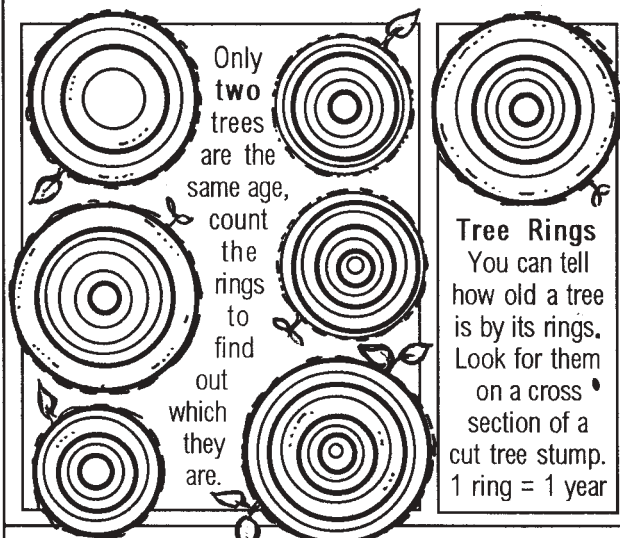
Jesus stopped as he passed by,  
And saw Zacchaeus there up high,  
Said "Dear Zacchaeus, come with me,  
I'm going to your house for tea".

Zacchaeus climbed down to the floor,  
And walked with Jesus to his door,  
Amazed the Lord would want to be  
With such a liar and cheat as he.

Zacchaeus, sorry for all he'd done,  
Said "Lord I'll pay back everyone,  
Half I own I give to the poor,  
Those I've cheated get four times more."

Jesus said "Today you are saved!"  
Zacchaeus replied "May God be praised!"

Read the full story of Zacchaeus in  
Luke 19:1-10



Only two trees are the same age, count the rings to find out which they are.

**Tree Rings**  
You can tell how old a tree is by its rings. Look for them on a cross section of a cut tree stump. 1 ring = 1 year

# Good News Parish Magazine November 2007

## Freestyle

Eastling Church  
10.30am  
November 11th

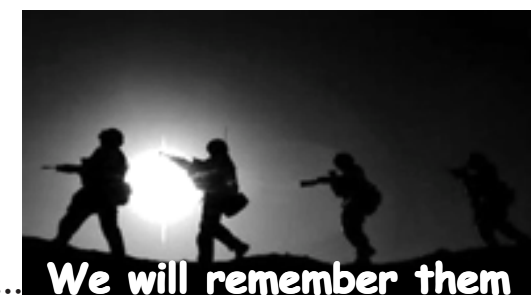
Breakfast from 10am  
Traidcraft Stall  
All ages welcome.

At the going down of the sun and in the morning .....

## Remembrance Sunday

11th November 2007  
Eastling  
8am Holy Communion  
10.30am Freestyle

Stalisfield  
10am Holy Communion  
You will be welcome at any of these services which will have a time of Remembrance.



**We will remember them**



## All Souls Memorial Service

Sunday 4th November  
3pm  
in Stalisfield Church

Please come if you have lost someone you love and would appreciate an opportunity to remember them and give thanks for their life.

## Rural Food Fair

Sunday 4th November  
Eastling School, 11am to 3pm.

Some really interesting stalls including  
Chocolate for Chocoholics, Pottery,  
Snoad Farm Meat, Temple Foods, The Spice of Life,  
Traidcraft, Left Handed Products, Usbourne Books &  
Riverford Organic Vegetables. Children's Activities

Christmas raffle and refreshments available.  
Free entry.

# Questions Questions Questions

## QUIZ NIGHT

The annual West Street Tickham Hunt Quiz takes place on Saturday 24th November in Eastling Village Hall. Phone Barrie on 01795 890242 to book your table of 6 - 8 people. Bring your own food and drink for 7.30pm start. Tickets £5 per person - all proceeds to Hunt funds. All welcome.

## Wit and Wisdom

Eastling Village Hall  
Saturday 10th November, 7.30pm  
We shall be holding another Wit and Wisdom evening on Saturday 10th November in aid of the Senior Citizens Christmas Lunch. Tables of six can be booked as usual by ringing Norman on 890242. The cost is £3 per person, please bring your own refreshments.

## Autumn Quiz Party

Stalisfield Village Hall,  
7.30pm on  
Friday 2nd November.  
The traditional Stalisfield formula will be followed: unbelievable inter-round prizes, bring-your-own nibbles and tipples and a modest charge of £2.50 per person.  
Call Ian (01795 890475) to book.

## Light and darkness : All Saints Day and 'Halloween'

My husband Peter and I have just been on a short holiday in Norfolk. One day we came upon a little church near the sea at Blakeney. It had a very narrow spindly tower as well as its normal-shaped, broader tower. We were impressed to hear that, every night, a light is lit at the top of the narrow tower. This can be seen from far out at sea as well as by the local villagers. It acts as a lighthouse. Later we



visited Ely cathedral, which has at its centre a hexagonal tower with windows called 'the lantern'. At night his lights up from inside like a lantern. It can be seen over the fens for miles around.

These lights shining in the darkness remind me of Jesus saying "I am the light of the world." (John 8v12a).

Jesus came to show the light of God's love and salvation in dark places and to overcome the darkness and fear of evil and death. This light leads us like a lighthouse does to sailors, or as a torch or lantern shows us the way if we walk through darkness.

At this time of year, when the days are getting shorter and darkness more apparent around us, we have two sorts of festival; Halloween - a celebration of darkness and All Saints and All Souls Days - one of light.

'Halloween' originates from a pagan Druid festival of 'Sowhain'. Evil spirits were thought to roam the earth during the night before the Day of the Dead. By contrast, 'All Saints' Day originates in the 9th century Christian Church.

It is when we remember those people who have brought good into the world by their lives (saints). The day following (All Souls), is when we remember all those who have died whom we loved, or had an impact on our lives.

It is kill-joy to avoid children having some fun having Halloween parties. Maybe they are handling their fear of death and darkness through play. But adults and older children should be aware of the dangers of the occult which is also practiced by some at this time. They should realise that witchcraft is evil, and that trying to contact dead souls at seances can cause harm and mental disturbances. 'Trick or treat' expeditions often frighten people on the doorstep and sometimes have lead to assaults and they should be discouraged.

On the other hand, focussing on the light brought into the world by Jesus and the saints through the ages is a power for good. Recently Christians have started introducing a new sort of celebration: Festivals of Light or Light Parties for children and teenagers. Lights of all kinds look fantastic in the dark evenings, and symbolise the conquest of evil by good. All the Saints may be celebrated- those who

### Signs & Symbols: Yew Trees

There are few trees that can be traced back in time as far as the Yew tree, which is thought to have descended from *paleotaxus rediva*, which was found more than 200,000,000 years ago. This species is long-living, self-regenerating, and evergreen. It is not surprising then that we find it in many churchyards today.

Many churchyard yews are over 900 years old and were planted after the Norman Conquest during a spate of church building. However the most common were introduced only from County Fermanagh from 1780, the Irish Yew, *Taxus fastigiata*.

So what made early Christians place a yew in the churchyard? Well, sometimes it may well have been the other way round - the Christians 'converting' a pagan site for Christian worship.

Whichever came first, the church building or the Yew tree, it is clear that Yews convey a wealth of meaning largely due to its reputation for long life. This is due to the unique way in which the tree grows.

Its branches grow down into the ground to form new stems, which then rise up around the old central growth as separate but linked trunks. Meanwhile the central part may decay leaving a hollow tree but with the indistinguishable new growing life around the original tree. So the yew has always been a symbol of

have gone before to light our way. Events such as illuminated 'grub-crawls' (going to different houses for each course of a meal) and discos can take place.

In church on All Saints Day we traditionally celebrate all the saints who do not have special days for themselves.

Also at this time there are All Souls Services in many churches. These are times when we can remember those we loved, and those who have made impact on our lives and have died. It is an opportunity both to honour, to mourn and to be thankful for those who have died-both recently and in the distant past.

In our parishes there will be an All Souls service in Stalisfield Church on November 4th at 3pm. If you would like the name of a loved one to be read out at this service please contact Caroline Pinchbeck or myself, or fill in one of the slips available in Eastling and Stalisfield churches. You can light a candle in their memory at the service if you would like to.

'Whoever follows me will never walk in darkness, but have the light of life' (John 8v12b)

Angela Cheeseman, Curate



Photo: www.eastling.org.uk

death and rebirth, the new that springs out of the old; resurrection life.

Because it is a slow-growing tree, it is a tight-grained wood, tough and resilient, used in the past for spears, spikes, staves, small hunting bows and eventually the famous long bow of the Middle Ages. The arrows were tipped with poison made from the yew. The entire tree is poisonous: wood, bark, needles and seed, all except the fleshy part around the seed. Hence it is often called, 'The Death Tree'.

In churchyards the yew trees were usually planted in a deliberate manner, with one often beside the path leading from the funeral gateway of the churchyard to the main door of the church - a symbol of resurrection hope for the mourners and a practical place for the priest and clerks to await on a wet or windy day.

This month: Have a look in a churchyard at a yew and consider where it is planted and what it is currently being used for. What does it say to you about life everlasting and resurrection, and death?

Raghu Gaiind has asked for this piece to included. If you would like to help, or to know more, please contact Dr Gaiind on 01622 858551

## MAITREEY PREKSHA SEVA MISSION

MAITREEY MISSION'S WORK IN LEPROSY COLONIES OF DELHI

Proposed Dormitory-cum-Vocational Centre for young girls living in Delhi leper colonies

A handful of like-minded people have joined together under the spiritual guidance of Her Grace Shyama Raj to serve and support the inhabitants of a small slum colony which has some 50 families who have been scarred over the years by the stigmata of leprosy. They are now not only disabled but also dispossessed and deprived of human kindness and care. Shyama Raj heads the Maitreey Preksha Seva Mission ( in short 'Maitreey Mission') and inspires all its members for its philanthropic activities, with a threefold objective to serve the humanity by way of providing Healing, Charity and Spirituality. 'Maitreey' in Sanskrit means unconditional love, true love and friendship. Our motto is 'Service to Man is worship to God'.

Recently we have been much concerned about the female children living in Delhi's leprosy colonies between the ages of 4 to 14 years. Despite our best efforts girl child remain at risk for her abuse which is physical, emotional and tragically at times also sexual. Some of the older girls 15 years onwards are at risk of being abducted/ sold to brothels and forced into prostitution. The dynamics of some of these families life style are complex and difficult to define without causing them and their community anguish and breaking faith in and with them.

There is now an urgent need to move some of these young, vulnerable girls from their disturbed home circumstances. There is a daily plea by the mothers for place of safety for their daughters. The Maitreey Mission has embarked upon a small residential project which will provide a heaven for up to 15 girls. They would live in group home atmosphere, They will all receive formal education through attendance at local school and training in



domestic craft through House Mothers, so that they can in future become self sufficient and help/support themselves and their families.

The families will continue to receive counselling. The girls will remain in touch with their families, but the contact would be under strict supervision. Please write if you would like to know more about our work. Would you be prepared to help us in some tangible way?

Dr. Raghu Gaiind is a part of our Mission and can be called upon if you wish to know more.

To accomplish this laudable task we humbly make an appeal to you good people.

Bhagwan ki kripa aap sab paar  
(God bless you all)

Sanjiv Verma

Secretary of Maitreey Mission.

Email: maitreey@gmail.com

www.maitreey.org

[www.faversham.org](http://www.faversham.org)

For information about  
Eastling, Ospringe,  
Otterden and Stalisfield  
and much more...



**DOMESTIC and INDUSTRIAL HEATING OIL**  
**Ashford**  
**01233 733137**  
EMAIL [sales@scf.co.uk](mailto:sales@scf.co.uk)  
**HEATING OIL \*ROAD FUEL\*LUBRICANTS\*OIL TANKS**  
Orbital Business Park, Ashford, Kent  
[www.scf.co.uk](http://www.scf.co.uk)

## Eastling Neighbourhood Watch.

Contact numbers:  
Parish/Village Warden Telephone 07794010394  
Crimestoppers 0800 555 111 (24 hours, free and anonymous)  
Sittingbourne police station 01795 477055  
Emergencies or crime in progress always use 999

The good news for the month is that ASBO, the jack Russell, was returned to her owner. The Police have been very active into investigating the disappearance of Asbo and enquiries are still continuing.

The dark early evenings are again upon us so, please do not forget to alter your settings for your security lights that automatically come on.

The end of September and beginning of October have been relatively quiet within Eastling and surrounding area. This has been due to the vigilance of all residents and to the Police presence that we do enjoy within our area. Well done everybody, keep vigilant and the information flowing.

Have a good November



### Eastling Website.

Please note change of address to <http://www.eastling.org.uk>. (The previous <eastling.info> address no longer works.) You may want to log on to the new site and "bookmark" it in your web browser.

While updating the website, we've also taken the opportunity to improve the Eastling Forum bulletin board. This is now free of any adverts and should run a little faster than in the past. You'll find a link to the Forum in the main menu on most pages of the Eastling Website... or you can go straight to it at: <http://www.eastling.org.uk/cgi-bin/eastlingforum/index.php>.

Finally, a big thank you to those good folk who, in the past, have provided information or photos to help update the website content. If you spot anything that needs correcting or adding, please do say. It's your local website and, with your help, it can only improve and be increasingly useful.

The Eastling Webmaster.

## Prayer Pointers November 2007



<u>Sundays</u>	For all died in the Wars.
<u>Mondays</u>	To serve God with all our hearts.
<u>Tuesdays</u>	For the people of Eastling, Stalisfield and Otterden
<u>Wednesdays</u>	For peace in Burma and other places of conflict
<u>Thursdays</u>	For all the Saints in heaven
<u>Fridays</u>	For all who work to promote the faith
<u>Saturdays</u>	Give thanks for the joy of music

## Services in our Churches

### 4th November All Saints

Ephesians 1. 11 - end, Luke 6. 20 - 31		
Eastling	8 a.m.	Holy Communion (BCP)
Eastling	10 a.m.	Holy Communion (CW)
Stalisfield	3 p.m.	All Souls Memorial Service

### 11th November Remembrance Sunday

2 Thessalonians 3, 6 - 13, Luke 21. 5 - 19		
Eastling	8 a.m.	Holy Communion (BCP)
Stalisfield	10 a.m.	Holy Communion (CW)
Eastling	10.30 a.m.	Freestyle

### 18th November 2nd before Advent

2 Timothy 3. 14 - 4. 5, Luke 18. 1 - 8		
Eastling	8 a.m.	Holy Communion (BCP)
Eastling	10 a.m.	Morning Prayer (BCP)
Eastling	10 a.m.	S Club in the village hall
Stalisfield	10 a.m.	Holy Communion (CW)

### 25th November Christ the King

Colossians 1. 11 - 20, Luke 23. 33 - 43		
Eastling	8 a.m.	Holy Communion (BCP)
Eastling	10 a.m.	Toy Service
Stalisfield	10 a.m.	Morning Prayer (BCP)

### 2nd December Advent Sunday

Romans 13. 11 - end, Matthew 24. 36 - 44		
Eastling	8 a.m.	Holy Communion (BCP)
Eastling	10 a.m.	Holy Communion (CW)
Stalisfield	10 a.m.	Morning Prayer (BCP)

(BCP) Service taken from the Book of Common Prayer, 1662.  
(CW) Service follows Common Worship Liturgy, 2000

### Mid Week Fellowship

Monday Prayer Group 2pm Seven Acres, Newnham Lane.  
Tuesday Study Group 8pm The Barn, Pinks Farm  
Thursday Prayer Group 10.15am Pinks Farm.  
New members welcome at any midweek group.

## Ministry in our Parishes

Priest in Charge	Reverend Caroline Pinchbeck (01795 890487) The Rectory, Newnham Lane, Eastling Faversham ME13 0AS <caroline.pinchbeck575@btinternet.com>
Curate	Reverend Angela Cheeseman (01795 892124) New House Farm, Eastling. ME13 0BN
Reader	Mr. Norman Fowler (01795 890412) 4 Meesons Close, Eastling.
Reader	Mr. Hugh Perks (01795 890603) Weald Cottage, Eastling.
<b>Churchwardens</b>	
<b>Eastling</b>	Mr S. Youle (01795 890368) Mrs. A. Smith (01795 890469)
<b>Stalisfield with Otterden</b>	Mrs P. Thompson (01795 890376) Mr M. Beckenham (01795 892079)

### Contacting the Church's staff

For general enquiries and for specific enquiries about Weddings or Baptisms please phone 01795 890487. If you would like the parish staff to conduct a funeral, either in our churches or elsewhere, please ask the funeral director to make the necessary arrangements.

### From the Registers

#### Baptisms

EVIE MAE Bromley  
7th October 2007 at Eastling

POPPY EMMA Newton  
21st October 2007 at Eastling

### Services at Whitehill Chapel

4th November	10 a.m.	Brunch
	10.40 a.m.	Family People's Choice
6th November	2.15 p.m.	Holy Communion
25th November	11 a.m.	People's Choice

For Baptisms, Weddings or Funerals at Whitehill, please contact Revd. D. Hodgson on 01795 532461

## THE FRUITS OF SUMMER IN EASTLING.

Many will recall that the summer started as it was to go on. The Youth Festival held at the Church on Saturday 21 July caused 'the heavens' to open and it rained! No matter, the event was a big success with a variety of stalls and games all raising money for the benefit of the young people in the Parish.

The Festival signaled the launching of a Rural Life Group. Based at The Eastling Centre over 30 young people between the ages of 10 and 18 years joined up and throughout the summer holidays, events and learning opportunities were enjoyed. Sessions were held 3 times weekly each of 4 hours duration.

An additional 30 young people from the Medway towns visited the Centre in two groups. Camping out for three nights, each group also undertook the programme set out for The Rural Life Group. Learning rural skills, respecting land management, footpaths and bridleways, horse management and the growing and preparation of fruits and vegetables, the courses proved extremely popular.

For many this was their first time camping out under canvas. Preparing their own food and setting much of the day to day itinerary under the guidance of their own leaders and staff from the Eastling Centre, the courses helped greatly in their development.

Speakers visited the Centre to give talks varying from land management to 'bats' in the Belfry. Outside visits using the Eastling 'bus' were made to Wildwood, with a follow up 'woodland walk' where the group were able to identify many of the plants and wildlife. This included a visit to a badger set and information on game keeping.

Each evening the groups enjoyed the facilities at Centre including 'beach' volley ball in the sand school, table tennis and other outdoor pursuits. Visits to The Vegetable Plot at the Centre gave advice on sowing, growing, harvesting and providing healthy fruits and vegetables. Each group learnt how to prepare food for an evening barbeque under the guidance of Lorraine the village 'Chef'.

It is pleasing to report that the events were all well received, the course appreciated by all who took part and the efforts of all the staff and volunteers rewarded by the enthusiasm shown by the young people.

Events within the village will continue through to Christmas to allow the group to remain together and to extend their experiences with the changes in the season.

The Rural Life Groups were not alone in visiting Eastling this year. Over 120 youngsters taking part in the Duke of Edinburgh Award Scheme camped out at The Eastling Centre during their hikes. The Vegetable Plot at The Centre has been host to over 600 primary school children from across the County visiting to have a 'hands on' experience of growing and harvesting fruits and vegetables.

Roll on 2008 - let's just hope for kinder weather!

## Canterbury Cathedral's

### Christmas Carol Services

Following last year's success, the Dean and Chapter has decided again to hold two Carol Services, one on 23rd December and the other on Christmas Eve, both starting at 3.00pm. As last year, entry to the Christmas Eve service will be by ticket only, whereas the service on the 23rd December will be unticketed and open to all until the Cathedral is full.



Everyone is very welcome to apply for the free tickets for the Christmas Eve Carol Service - however, it will be a case of first come, first served. Anyone wishing to attend the Christmas Eve Carol Service should write to: Mrs. R. Wilson, Cathedral House, 11 The Precincts, Canterbury, CT1 2EH enclosing a stamped self addressed envelope. For information concerning special access arrangements, please call 01227 762862. Tickets will be sent out in early December and unsuccessful applicants will be invited to join the service on 23rd December

Also on Christmas Eve, there will be a Crib Service at approximately 12.30 pm immediately after the 11.00 am when the Dean of Canterbury will lead prayers and carols especially for children, by the crib outside the main entrance to the Cathedral. On Thursday 28th December at 3.00 pm there will be a Christingle service in the Nave.

## THE BUNCE TRUST

The Bunce Trust was founded in the 17th century to promote Christian Teaching in the Anglican tradition to children living in Otterden and Stalisfield. Later this was extended to include Throwley and now we include the Benefices, although the emphasis is on the core villages.

On 22nd September we had a wonderful, and free, brilliantly sunny day at The Friars at Aylesford. We wandered peacefully in the great spaces of the Friary admiring the sculptures, the ducks, the pottery, the shrines, the well stocked shop and the restaurant. The gentle pace and prayerful atmosphere pervaded the day without any sense of 'oughts' and 'shoulds'. We met other visitors, children could run around and play, but sadly, we didn't bring very many with us. The Trust was glad to offer to fill up the coach with anyone who wanted to go from the Benefices, including those on their own and some octogenarians. At the end of the day we were each given a hazlenut by the Revd Caroline Pinchbeck Priest in Charge of Eastling, Stalisfield and Otterden and Rural Life Officer for the Diocese, at our own short service in the chapel of St. Jude. Why a hazlenut? To remind us of Mother Julian who

famously said of one: 'It is all that is made.' 'It lasts and ever shall because God made it'.

Don't forget you can apply to 'The Bunce' for funding for individuals and groups wanting to promote Christian teaching. Over recent years the Trust has, for example, given money for school leavers' Bibles at Eastling and Sheldwich Primary Schools, which are attended by most of the children from our core villages; taken groups of primary school children to Rochester and Canterbury Cathedrals; provided funding for Christian RE materials in those schools and for Sunday School/Children's Church in Throwley and Leaveland; contributed towards a secondary school pupil's trip to Auschwitz; a student's trip to help at a Christian school in India and a university student's theology books. Two years ago we took a coach to visit a Hindu Temple, a Mosque and the Cathedral in the Medway Towns. Currently we are contributing to the salary of the full time Eastling Church Youth Worker.

J. Baker (chair) D. Murray (treasurer),  
J. Hills and A. Stoddart (trustees).

## Faversham Trophies

SPORTS TROPHIES  
ENGRAVING  
GLASSWARE  
GLASS ENGRAVING  
122 St Mary's Road, Faversham, Kent. ME13 8EE  
Tel (01795) 539528

## SEASONED LOGS AND KINDLING

TEL: BEN ON 07970 549017



## GARDEN CLEARANCE

### Most jobs considered.

Mowing, strimming, Trees topped/removed  
Fences and gates erected.

For a free quote call

Nick Swatland **01795 886814**  
mobile 07713 766141.



### EASTLING VILLAGE HALL

To book ring Emma Walker on 07940 490 896



A beautiful hall in a lovely village location for your wedding, club, sports or meetings. The large hall has pretty grounds, car parking, meeting rooms and fully equipped facilities for professional or self catering occasion.

### WANTED - BOOKING CLERK

#### FOR EASTLING VILLAGE HALL

The Trustees are looking for a volunteer to act as Booking Clerk for Eastling Village Hall. Duties would consist of showing the hall to prospective hirers and dealing with the booking diary. Would need to live fairly local to the Hall to be able to arrange for key collection etc. Appointment for one year from January 2008 in the first instance. If you are interested or would like to discuss the post further, please call the Trust Chairman, Julia Bailey, on 01795 890401 or 890746.

### Coffee Pop-In

Pop-In is open 9 - 11am, every Wednesday, in Eastling Village Hall.

**Homemade Cakes & Traidcraft** on 7th November

All ages welcome to join us for a free cuppa and a chat - plenty of toys suitable for toddlers.

### 'Tea and Cakes'

Thank you to everyone who supported the 'Tea and Cakes' afternoon last month. I am delighted that just over £200 was raised and I have sent £70 to the Canterbury Cathedral Appeal, leaving £135 for our Youth Worker fund. A special thank you to June Akhurst for keeping the washing up under control! I hope everyone enjoyed the afternoon. Hilary.

### Thanks

Eastling Senior Citizens would like to say a big thank you to the Landlord / Landlady, customers and staff of the Carpenters Arms, not forgetting Keith Neaves the Auctioneer, for their generous donation of £300 towards the Christmas Lunch. Well done and thank you to all. Mrs M. Neaves and Mrs O. Simmonds, Treasurers.

### Reminders

The Eastling Senior Citizens Christmas Lunch will be on Tuesday 4th December. Invitations will be sent out very soon. If you, or someone you know, are eligible and have not received one, please notify Norman and Marina on 890242.

### PUDDLEDUCKS

Parent & Toddler Group at Champion Hall, Painter's Forstal When we meet on Tuesday 30th October we will be decorating paper pumpkins and then making firework pictures. There will also be lots of free play time! Still only £2 a session, which includes a snack and drink for the children as well as free drinks for parents.

Do come along to join us on Tuesday and Friday mornings 9.30am to 11.25am. Jill Seaman (01795 890519)



**Eastling - A - Ding Dong Sing Along 2**  
Friday 14th and Saturday 15th December

Eastling Church

Doors and bar open at 7pm  
Show starts at 7.30pm

Tickets: Adults £7, under 16's £4  
Available from 890149, 890338 or  
<leigh.fitness@btinternet.com>  
Proceeds to Eastling/Stalisfield Youth Worker Fund

### Charing and District Local History Society

On Thursday 8th November at 8pm, ... AND SO WE RAISED THE MARY ROSE. An engineer's account of how this was achieved. *Albert Granville.*

The presentation will be given in the Parish Hall, Charing. Everyone who is interested will be welcomed when the doors open at 7.45pm. Non-members of the Society pay £2.

### The Harvest shared.

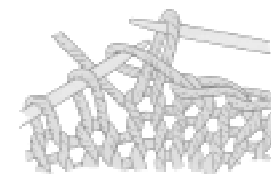
A cheque will be sent to "Harvest Help" charity for £218.50 from the Harvest service at Eastling. Produce from both churches has all gone to local charities.

### Cantiana at Christmas

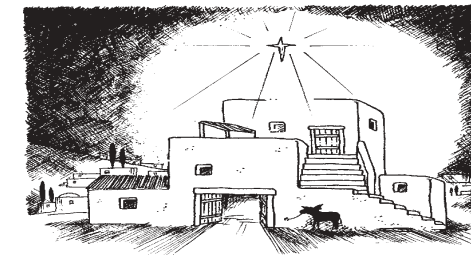
Advance notice of a concert of Christmas music in Newnham Church Saturday 22nd December - 7.30pm until about 9.00 ish followed by Mince Pies and Punch. Proceeds will be donated to British Humanitarian Aid. More details in December magazine

### Afternoon Club

November activities  
8th Board Games  
22nd Board Games  
2pm in the Champion Hall, Painter's Forstal



Hilary Galer has lots of knitting wool to give away. They are the unused bits left over from knitting various garments. Ideal for blanket squares etc. I'll never get around to using them myself. Anyone like them? 01795 890780



### Christmas Eve Nine Lessons and Carols

4pm in

Eastling Church

Come and join our choir - **Choir practices** start 11th November 5-6pm every Sunday in church. All voice parts welcome.

### Crib Service

6.30pm

Sunday 16th December

Stalisfield Church



## November

2007



1st Otterden W.I.	7.30pm The Harrow
2nd Quiz Party	7.30pm Stalisfield 'Hut'
4th Rural Fair	11am Eastling School
7th Cakes at Pop-In	9 - 11am Eastling Village Hall
8th Afternoon Club	2pm Champion Hall
8th History Society	7.45pm Charing Parish Hall
9th Craft Club	6.15pm Champion Hall
10th Jumble Sale	1pm Eastling Village Hall
10th Wit & Widom	7.30pm Eastling Village Hall
14th Parish Council Meeting	6pm Eastling Village Hall
15th Deadline for November Good News	
20th Painter's Forstal W.I. AGM	2.15pm Champion Hall
22nd Afternoon Club	2pm Champion Hall
23rd Craft Club	6.15pm Champion Hall
24th Family Club	7pm Stalisfield Village Hall
24th Quiz Night	7.30pm Eastling Village Hall
27th Magazine Folding	2pm Pinks Farm, Eastling
DECEMBER 4th Eastling Senior Citizens' Christmas Lunch	Stalisfield 'Hut'
14th Christmas Show	
14 and 15th Eastling-a-dingdong-singalong	Eastling Church
15th Over 60's Christmas Tea	Stalisfield 'Hut'
16th Crib Service	6.30pm Stalisfield Church
16th Carols by Candlelight	6.30pm Champion Hall
22nd Christmas Music	7.30pm Newnham Church
24th Nine Lessons and Carols	4pm Eastling Church

### December Good News

If you would like to advertise in this magazine, submit articles, features or stories for publication, or would like any forthcoming events publicised, send your magazine contribution by the 15th November to Hilary Harlow, Pinks Farm, Eastling, Faversham ME13 0BA. Tel: 01795 890338. Where possible, please submit your entries by e-mail: h.f.harlow@btconnect.com. Past and current issues of the Good News can be viewed on [www.northdowns.plus.com/goodnews/](http://www.northdowns.plus.com/goodnews/)

### Autumn Quiz Night

If you haven't already done so, you have very little time to advise Ian (01795 890475) that you wish to take part in the best Quiz Party in town, in Stalisfield's historic Hut, 7.30pm on Friday 2nd November.

Organize a table of six if you can, or take pot luck in joining others if you can't. Either way you are ensured of a fabulous evening.

The traditional Stalisfield formula will be followed: unbelievable inter-round prizes, bring-your-own nibbles and tipples and a modest charge of £2.50 per person.

### Stalisfield Theatre

We have good news and bad new. The good news is that seating is SOLD OUT. The bad news is for the unfortunates who left it too late and can now only join the hopefuls on the 'cancellations' list. Sorry!

### Functions Past

Harvest Supper  
Good Food, good company, a little wine and a festively decorated hall all combined to make an enjoyable social occasion. Musical entertainment, provided by the

## Stalisfield Highlife

Sprawsons, ensured a festive atmosphere. Ian McKay's closing address acknowledged and thanked the many individuals who made the event possible worth their efforts and contributions of materials. We all went home happy.

### KCC Archaeology Evening

A good size audience listened with interest to the address on conservation by Ed Slater and Andrew Mayfield, both of KCC Heritage Conservation.

The subject matter concerned itself mainly with the activities of the KCC and the resources available to provide access to currently available information.

Some aspect of local archaeology were touched upon but, as only two sites in Stalisfield appeared on the information data base, scope was limited. The two sites are St. Mary's Church and the Windmill mound.

Nevertheless, the address was well received and generated some lively questioning at the end.

## Keep Fit in November

### FITNESS CLASSES

@ EASTLING VILLAGE HALL

### WEDNESDAYS

7.00pm BUMS, LEGS & TUMS

helps to tone & shape these specific areas.

8.00pm FIT DANCE, using fun DANCE

moves this class works on aerobic fitness and it helps to control and burn body fat.

### THURSDAYS

9.15am FITNESS PILATES

A blend of Pilates & dance exercises.

Helps to develop muscle tone, balance, flexibility & relaxation

Classes £4.00 or £7.00 for double class on Wednesdays

### FREESTYLE DANCE 1STD

I am currently guest teaching (under 14's) at G.G. Dance Club in Lenham on Wednesdays 4.30pm.

More info on any of the classes contact Leigh on 890 149

<leigh.fitness@btinternet.com>

Thankyou to all who came to our formation meeting. We now have a President and committee, thankyou to those who have given their time and enthusiastic support.

Our thanks to Rachel and Marion from the WI federation for answering our questions and guiding us through our set up. We would also like to thank The Harrow for kindly allowing us to hold our meetings there, it has proved a popular choice!

I would be grateful if all those ladies who expressed an interest in joining but couldn't make our meeting please contact me for a WI membership form. (This can also be done online) We are totally self funded and in order to have all the interesting fun speakers and trips you would all like to do we need the support of our local Ladies. Any lady no matter what age from Otterden or the surrounding area would be very welcome to join. We are very keen to include all ladies and to this effect we will be alternating our meeting days between Tuesday and Thursday. Some ladies have expressed an interest in meeting during the day, we would be happy to hold some afternoon meetings as well, so please contact me so I can see how many of you would like this. Our next meeting is on Thursday 1st November at 7.30 pm in the Harrow. Our speaker will be Kate Connell talking about the History of Otterden.

Please put our Christmas party in your diaries, Tuesday 11th December. We will be making Christmas wreaths followed by dinner and merriment. Emma Norwood, (01795) 892138 <emmeenorwood@yahoo.co.uk>

## Otterden W.I.