

Y-Generation Saturday Club

Every Sunday night!
6:30 till 8:00 year 7+
Eastling Village Hall

Year 3 plus
Different Activities Each week
come and have fun with your
friends!!
Saturday 10th and 24th
10:00 till 11:00 Eastling Village Hall

S Club

meets in
Eastling Village Hall
Sunday 18th February,
10am
All primary school aged
children welcome.

New Opportunity!

We're looking for enthusiastic young
musicians who want to form the
Eastling Youth Band! All instruments
and vocals welcome! Contact Jo for
more info

For more info on any Eastling Youth
work contact Jo Gilkes on NEW
number 07999807519 or email at
eastlingyouthworker@hotmail.co.uk

Youngstyle

in Eastling Church
Sunday 25th February, 10am
Half an hour of fun and
teaching. All welcome.

Come and join us!

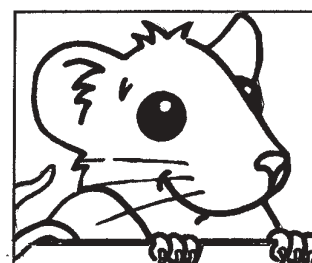
Eastling Puppet Club

restarts this February
All 9-16 yr olds welcome
(no previous experience necessary!)
Rehearsals in Eastling Village Hall
will be 3 - 4pm on Saturdays:
Feb 3rd, Feb 17th,
March 3rd and March 17th.
Performance in Eastling Church,
March 18th
(Mothers Day) at 10am.
Enquiries: Angela Cheeseman
01795 892124



Craft Club

2nd & 23rd February
6.15 - 7.15pm
Champion Hall
50p a session.
Contact number 532756.

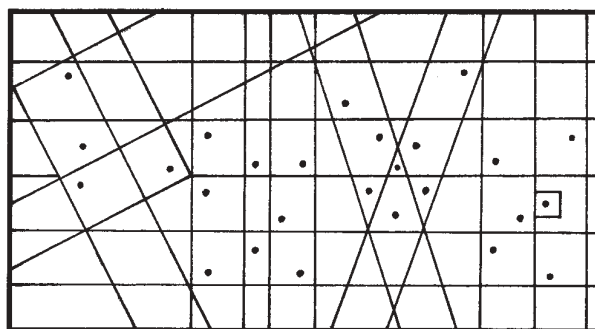


MOUSE HOLE



FIND THE MISSING HUSBANDS

MARY BOAZ
SARAH JACOB
RUTH ZECHARIAH
REBEKAH JOSEPH
RACHEL ABRAHAM
ELIZABETH ISAAC



Use the clues to
find the names.
The last letter of
one name is the first
of the next name.

• Wrote 13 New
Testament letters
• He wrote the
third Gospel

• Mother of John
Luke 1: 13
• Sarai's servant
Genesis 16:1

• Joseph's mother
Genesis 30:24
• Wife turned to
salt Genesis 19:26

• Paul's friend
2 Corinthians 8: 27
• A brother of Jesus
Matthew 13: 55

• Ruth's mother-in-
-law Ruth 3: 1

IT'S A PUZZLE!

God sent 9 plagues
on Egypt.
What were they?
Change each letter
to the one after it
in the alphabet
to find out.

AKNNC

EQNFR

FMZSR

EKHDR

CHRDZRD

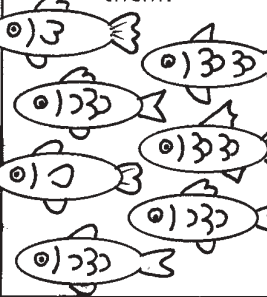
OKZFTD

GZHK

KNBTRSR

CZQJMDRR

The Disciples
have been fishing
and caught 2 fish the
same, can you find
them?



WHAT'S IN THE
PICTURE?
Colour in all the
shapes with a dot in
to find out what
Jesus wants us
to do to each other.

Good News

Parish Magazine

February 2007



Ash Wednesday

14th February
Holy Communion
7.30pm in
Eastling Church



Cold Wind

The air is cold as stone yet no frost lies
The breath of wind is fast though invisible it flies,
Across the empty field and through the bony trees
Into the darkened wood, where suddenly appeared
It quietens just to frisk again
And meet me, full and bold
Along the open pathway where it strikes me - cold.

A. Keen



Thursday Prayer Group
will be following a
five week course on prayer for Lent

Life Source

by

Robert Warren and Kate Bruce
Running 1st - 29th March
at Pinks Farm, Eastling
10.15am - 12 noon

The interactive sessions explore:

- *Source of life - prayer as relationship
- *Source of joy - prayer as enjoying God
- *Source of light - prayer as listening
- *Source of wholeness - prayer as honesty
- *Source of love - prayer as care

All welcome, more details from 890338



LENT BOOK CLUB.

With so much to give up over
Lent I need help to get by.
Anyone happy to join a small
group of book lovers for a six
week period of one hourly
meetings, when we discuss
our favourite reads, ring Julia
Bailey on 890746. We will
meet at Churchfields on an
afternoon or evening that suits
all. Club starts week
commencing February 19th.

Tuesday Lent Study
2nd February - 27th March
8pm in the Barn at Pinks Farm
"Christ our Passover"
Christopher Hill gives eight
Bible teaching seminars,
exploring the background
world of Egypt in 1300BC
and 1st century Jerusalem.
An enlightening series on film
taken on location in Israel.
More details from
01795 890338

The news magazine for the combined parishes of Eastling, Stalisfield and Otterden

Consider the lilies of the field, and the birds of the air

The snowdrops are beginning to flower, the blossom on the cherry trees is beginning to show, and when the sun shines we may look at the landscape around us as the scenery takes on a look of brighter, clearer colours. You may have read in the papers that these are exceptional happenings as the mild nature of the winter, thus far, has brought the season of Spring to us early. In January, the Church celebrated the beginning of a new season of growing with a service on Plough Sunday. At this service, the Church gives thanks to God for the abundance of creation, but also it reflects upon the way in which we are stewards of the landscape around us. The farmers and growers, who live in our villages, will have begun to think about what is good to grow on the soil around us. For those of us who are more mundane growers, we are beginning to think about new plants for our gardens, and which vegetables we might grow this year. We may be brave and experiment; or in hindsight of last year’s harvest we may never try carrots again!

In his teaching, Jesus often asked his listeners to look at what happens in their daily lives to learn about the nature of God and His love for them and, many generations later, us! Jesus asked his listeners to look at the birds, their livestock and their crops, to help them understand his teaching. In the gospel of Matthew, Jesus asks us to look at the

lilies, and the birds to learn how we are to trust and find our hope in God. For those who are anxious and uncertain, Jesus reassures us that God will provide us with sufficient strength to meet all that we face. He does suggest that we should be concerned for all that the present day has in store for us, rather than be vexed about the horrors that tomorrow may bring.

We have the privilege of living a lifestyle, and in a place that is the envy of many, as they long for the romanticism of the rural idyll. Whatever our joys, dreams and aspirations we cannot deny the numerous challenges that all who live in the country-side face. These challenges have been, and continue to be, detrimental to the lives of individuals and our rural communities.

So when the sun shines and you are halted to admire the beauty of creation, I encourage you to give thanks. Ponder too, on your neighbours, and those who work the land in our villages, and those whom you know who are facing difficulties as they go about their daily work. And then if the sun is still shining, spend time looking at the birds, the flowers, and the landscape and in your mind remember these words from that hymn, a favourite of many, All things bright and beautiful:

He gave us eyes to see them,
and lips that we might tell,
how great is God Almighty,
who has made all things well.
Amen.
Caroline Pinchbeck

Prayer Pointers
February 2007

<u>Sundays</u>	For a new perspective on Jesus.
<u>Mondays</u>	For strength against temptation.
<u>Tuesdays</u>	For Suchana Community Society in West Bengal.
<u>Wednesdays</u>	For those trapped in a spiral of poverty.
<u>Thursdays</u>	For music teachers.
<u>Fridays</u>	For all who make their living on, or from the sea.
<u>Saturdays</u>	Give thanks for our families and friends.

Sunday
Freestyle
11th February
10.30am
Eastling Church
Jesus said "Go into all the world and make disciples of all nations."
All Welcome
Breakfast from 10am
Crèche available during service

RURAL ROUND-UP
In addition to ministering in the parishes of Eastling and Stalisfield, I am also Rural Advisor for Canterbury and Rochester Dioceses.

Some of the projects happening in February across Kent are –

- ▶ Training day on being an eco-congregation (17th February). How does the local church and community respond to environmental concerns and challenges?
- ▶ Ways in which Kent will respond to rural deprivation and livelihood.
- ▶ A workshop on youth in rural communities, how do people get involved?
- ▶ Always, your prayers for all who work and live in the countryside, and the ongoing challenges with which it is faced.

Signs of Life
A series of
HOLY WEEK LECTURES
by Dr Rowan Williams
Archbishop of Canterbury
2nd, 3rd, 4th April, 7.30pm
at Canterbury Cathedral
Monday 2nd - Baptism
Tuesday 3rd - Bible
Wednesday 4th - Eucharist
NO TICKETS REQUIRED

If you missed the Archbishop’s New Year Message on TV, the full text can be viewed at www.archbishopofcanterbury.org/releases/061231.htm if you don’t have access to a computer and would like it printed out please contact Hilary on 01795 890338.

Eastling Neighbourhood Watch.

Contact numbers:
Parish/Village Warden Telephone 07794010394
Swale NHW office 0800 100 3308 (free)
E-mail -neighbourhoodwatch.swale@kent.pnn.police.uk
Crimestoppers 0800 555 111 (24 hours, free and anonymous)
NHW liaison officer 01795 419212
Sittingbourne police station 01795 477055
Emergencies or crime in progress always use 999
Kent Trading Standards 08457 585 497

Dog Thefts:
A Jack Russell bitch which has been spayed named Fudge, whom you have probably seen publicised, was taken from Kennels at Doddington on Christmas afternoon and as yet has not been traced. A reward has been posted for her safe return.

Tally, pictured here, was stolen from a secure pen in an Eastling back garden in 19th January at 11.50am. Two men, one 6ft, were seen and can be identified, driving a small silver car, possibly a Vauxhall Corsa. Tally has an open wound on her left elbow and is on antibiotics and anti-inflammatory medication. She has been spayed. A reward has been offered for her safe return - call 890787, or the village warden on 07794010394



On the subject of dogs there has been an increase all over the village of dogs fouling pavements and footpaths. It is

against the local byelaws issued by Swale Council and it is an offence to allow your dog or dogs to foul pavements or footpaths with a fine up to £100. Please clear up after your dog and do not allow them to run off the lead into private gardens or foul the footpaths. The Village Warden, who is a dog owner, has had a very large deposit dumped on the small piece of grass he has in the front of his property and he would be quite happy for the animal's owner to come and retrieve it!

Just before Christmas the Reverend Cheeseman's car was broken into outside the village church and personal items were stolen. Thanks to a villager on one of their daily walk/jog, the items were seen dumped in one of the local lanes and returned to the Reverend. Just after the break in a car with three youths were seen by the Village Warden within the area and all details relevant to the car were passed onto the Police. Obviously the stolen goods had already been disposed of. Should any kind of suspicious behaviour be seen in the Village which you are not happy with, please ring the Warden if you do not wish to ring the police direct and he will be pleased to pass it on to the necessary authority.

Spring is fast approaching, so there will be undesirable persons touring around to help you dispose of your ride-on and ordinary lawn mowers which, I am sure, you do not want to lose. So please make sure all your gardening equipment is locked away after use and, if possible, a suitable alarm installed. Have a safe and enjoyable month

EASTLING PARISH COUNCIL

Notes from the meeting held on Wednesday 10th January .

The Warden reported that the Neighbourhood Watch was now operating effectively. Meetings have been planned with the other representatives in an attempt to make the operation more efficient. He said that he felt he was beginning to get a favourable level of support from the community. He attended the Senior Citizens’ Christmas lunch and had explained his role to them.

The Chairman reported that he had spoken to Swale Borough Council regarding the Village Warden’s job description and its implications for financial assistance. Swale had made one or two suggestions and the Clerk would liaise with Cllr. Bailey to make the necessary modifications. Cllr Bailey had attended a meeting of the Mid Kent Downs Advisory Committee on behalf of the Council and reported that a lawyer from Crown Prosecution Service and Sgt Small of the Environmental Crime Squad were working together to prosecute fly-tippers. Any instances should be reported to the Warden who would pass the details to the appropriate authority.

The Treasurer reported that there was £856 in the Current Account and £1540 on deposit. After much discussion the Council decided to set a precept of 14p. It was emphasised that the increase was, in part, due to the Capital Expenditure in setting up the Office and also the possible expenses that could be incurred by the Warden. The 14p precept is well below the average in Swale. The Council reiterated that the facilities of the computer and the internet access were available to all members of the community at agreed times. Cllr Cheeseman declared an interest as the Council approved a donation of £50.00 to the Faversham branch of the Citizens’ Advice Bureau.

The Clerk has submitted an application for funding to the Kent County Council to assist with the production and erection of a village sign with copy to Cllr Andrew Bowles. Cllr Bowles was impressed with the design and pledged his support. He has since confirmed that our application for funding has been successful and paperwork needs to be completed by the end of January. The Council approved and decided to proceed with the project

Alan Willson has planted some 100 daffodil bulbs along the Church path, which would enhance the character of the edges. Cllr Bowles has also been trying to organise a site visit with the police to discuss the Council’s request for 30 mph speed limit. The Clerk was asked to bring to the attention of KCC the poor state of the road in Newnham Lane and North Eastling Hill.

Cllr Bailey advised him that the Village Hall Trustees had been aware of the problem with regard to the paper bins before Christmas and had contacted Swale Borough Council without success. Under normal circumstances the service was extremely reliable and generated a reasonable amount of income for the Village Hall. As far as the bottle banks were concerned this was the first time that they were becoming due to be emptied and consequently they were being monitored closely. She urged all residents to use the facilities thus helping to provide funds for the Village Hall and also lightening the loads in their own wheelie bins. Cllr Bickerdike also expressed his concern that lights were left on at the school for the duration of the Christmas holiday.

The next meeting of the Parish Council will take place on Wednesday 14th March 2007 at 6.00 pm.

Services in our Churches

Ministry in our Parishes

4th February 3rd Sunday before Lent

1 Corinthians 15. 1-11, Luke 5. 1-11
Eastling 10 a.m. Holy Communion (CW)
(Crèche available)
Stalisfield 10 a.m. Holy Communion (CW)

11th February 2nd Sunday before Lent

1 Corinthians 15: 12 - 20, Luke 6. 17 - 26
Eastling 8 a.m. Holy Communion (BCP)
Eastling 10.30 a.m. Freestyle (Crèche available)
Stalisfield 10 a.m. Morning Prayer (BCP)

18th February Sunday before Lent

2 Corinthians 3.12- 4.2, Luke 9. 28 - 36
Eastling 10 a.m. Morning Prayer (BCP)
Village Hall 10 a.m. S Club
Stalisfield 10 a.m. Holy Communion (CW)

21st February Ash Wednesday

2 Corinthians 5. 20b - 6.10, John 8. 1 - 11
Eastling 7.30 p.m. Holy Communion (CW)

25th February Lent 1

Romans 10: 8b - 13, Luke 4. 1 - 13
Eastling 10 a.m. Youngstyle
Stalisfield 8 a.m. Holy Communion (BCP)

4th March Lent 2

Philippians 3. 17 - 4. 1, Luke 13. 31 - end
Eastling 10 a.m. Holy Communion (CW)
(Crèche available)
Stalisfield 10 a.m. Holy Communion (CW)

~~~~~  
(BCP) Service taken from the Book of Common Prayer, 1662.  
(CW) Service follows Common Worship Liturgy, 2000

|                           |                                                                                                         |
|---------------------------|---------------------------------------------------------------------------------------------------------|
| Priest in Charge          | Reverend Caroline Pinchbeck (01795 890487)<br>The Rectory, Newnham Lane, Eastling<br>Faversham ME13 0AS |
| Curate                    | Reverend Angela Cheeseman (01795 892124)<br>New House Farm, Eastling. ME13 0BN                          |
| Reader                    | Mr. Norman Fowler (01795 890412)<br>4 Meesons Close, Eastling.                                          |
| Reader                    | Mr. Hugh Perks (01795 890603)<br>Weald Cottage, Eastling.                                               |
| <b>Churchwardens</b>      |                                                                                                         |
| Eastling                  | Mr S. Youle (01795 890368)<br>Mrs. A. Smith (01795 890469)                                              |
| Stalisfield with Otterden |                                                                                                         |
| Joint Warden {            | Mrs. J. Baker (01622 858332)<br>Mrs S. Gaind (01622 858551)<br>Mrs P. Thompson (01795 890376)           |

Contacting the Church's staff

For general enquiries and for specific enquiries about Weddings or Baptisms please phone 01795 890487. If you would like the parish staff to conduct a funeral, either in our churches or elsewhere, please ask the funeral director to make the necessary arrangements.

Mid Week Worship at Eastling

2.15pm Celtic Prayer every Wednesday in church -  
20 minutes for prayer and reflection  
Monday Prayer Group 2pm Seven Acres, Newnham Lane.  
Tuesday Study Group 8pm The Barn, Pinks Farm  
Thursday Prayer Group 10.15am Pinks Farm.

Services at Whitehill Chapel

4th February 10a.m. Brunch followed by  
10.40 a.m. Family People's Choice  
6th February 2.15 p.m. Holy Communion  
25th February 11 a.m. People's Choice

Fitness Classes @ Eastling Village Hall  
to suit all ages & abilities

WEDNESDAYS

6.00pm GENTLE EXERCISE for the  
more mature participant & those starting  
or returning to exercise  
7.00pm BUMS, LEGS & TUMS helps to  
tone & shape these specific areas.  
8.00pm FAT BURNER works on aerobic  
fitness, using fun dance moves.  
Helps to control and burn body fat.

THURSDAYS

9.15am FITNESS PILATES  
A blend of Pilates & dance exercises.  
Helps to develop muscle tone, balance,  
flexibility& relaxation  
For more info contact Leigh on 890 149  
or leigh.fitness@btinternet.com

Make your New Year's  
Resolution a reality  
GET FIT NOW!  
**Kung Fu**  
for fitness, peace of mind  
& self defence  
Tuesday 8.00 - 9.00 p.m.  
Eastling Village Hall  
beginners welcome anytime  
(Classes are designed for adults of  
any fitness level)  
For more information call  
Laurence and Christina on  
01795 890264

Suchana

The Uttor Chandipur Community Society in West Bengal.

Angela Stoddart, from Throwley, writes  
a letter of thanks to all who bought  
Suchana Christmas Cards via Pat Th-  
ompson.  
The greetings cards and associated do-  
nations form the entire income of this  
Indian charity founded and lead by  
Angela's daughter, Kirsty Milward, who  
grew up in Sheldwich and Throwley.  
Suchana's education group (preschool  
and school support for 106 children)  
meets at Kirsty's home, in India, three  
times a week.  
The support received in the past year has  
enabled it to increase and strengthen the  
work it does. The Health project is now  
very active and is about to start visiting  
local primary schools for Health Edu-  
cation sessions. The nurses also work  
with the families.  
The health group meets twice a week and  
recently held an eye clinic - 80 people  
turned up, many with cataract problems.



Preparation for Cataract Ops being done at  
Kirsty's house. The eye camps diagnosis  
takes place in a queue in her garden!

Kirsty is trying to raise £6000 urgently,  
to buy an ideal piece of land, just on the  
market, for a permanent home for the  
group.  
**Greetings cards for sale**  
Without a printed message these cards  
are suitable for use as message and birth-  
day cards. Contact Angela on 890210 or  
angela@cforstal.surfaid.org



Ospringe, Faversham  
Tel (01795) 597625  
www.syndalepark.com



Art class - drawing the goat

An Outing to The Friars at Aylesford

The Bunce Ecclesiastical Charity is organising an  
outing for your Parish to The Friars at Aylesford on Sat  
22nd September 2007. The visit will be a full day event  
and is open to any of our parishioners – so please put  
the date in your diary – come on your own or with other  
parishioners or friends and family – it is suitable for both  
able bodied and less able – please let us know if you  
have special requirements.  
  
This will be fully funded by the Charity and will cover  
coach transport to the Carmelite Priory [from Sheldwich  
Lees at 10am and Lenham 10.15am pickup points  
(transport from our parishes to Lenham can be arranged  
if necessary)] and activities for adults and children

during the day  
including the pottery,  
visiting the beautiful  
grounds, special ser-  
vice in the Cloister  
Chapel , barns complex and visiting the Main Shrine -  
guests will need to bring their own packed lunch or  
purchase lunch in the tea room. There are wonderful  
picnic areas, and also a covered area in which to eat your  
picnic. We will be returning at 4pm.  
Book a place/s now by calling Jane Baker on 01622  
850686 Janebiztrainingnetwork@btinternet.com or  
Angela Stoddart on 01795 890210  
angela@cforstal.surfaid.org



Chartered Surveyors • Property Consultants

Residential Sales  
Lettings and Management  
Land and New Homes

01227 457441  
Cluttons LLP, 29-30 Watling Street  
Canterbury CT1 2UD  
Email: canterbury@cluttons.com  
cluttons.com



Cluttons Private Finance – independent mortgage  
brokers – authorised and regulated by the Financial  
Services Authority



**A letter to the Editor:**  
*May I, through the magazine, thank all of the people who gave so generously at the Eastling Christmas Carol Service. The money will help to fund my next trip to Ukraine in the Autumn. Christine and I are overawed by the way we have been accepted into the parish and we thank God for such loving people.*

*God Bless you all*  
*David Fagg*  
*(for British Humanitarian Aid)*  
[The collection taken at the Eastling carol service was divided between David and Eastling Church funds.]

**Fireworks at Otterden**  
Another splendid firework evening was held at Hurst Farm for locals, friends and family. Contributions raised £250 for the Salvation Army. Thank you to everyone who supported this event , and those involved in the organisation.  
Gill Linch

**Eastling Recycling**  
The income from the paper recycling bins at the village hall continues to be a very good souce of income to the Trustees. If anything, they were a little too successful over the Christmas and New Year period when they were filled to overflowing and consequently paper and cardboard was left lying on the ground next to them. Because of high winds blowing the "overflow" around, the hall car park was littered with rubbish and the Trustees' thanks go to the kind souls who tidied up. Hopefully, the overflow situation won't occur very often, but if the paper recycling bins are full we would ask you to either leave waste paper tied up in bundles or tied up into plastic bags so that it won't blow around. Better still, store it in your sheds until the bins are empty again!

What a pity we do not receive any income from the glass recycling bins - the Trust would become extremely wealthy! The green bin seems to get filled very quickly but Swale Borough Council's Recycling Officer tells us that the brown bin can be used for any colour glass when the others are full.  
Thanks for all your recycling efforts.  
Keep it up.  
Village Hall Trustees.

**PUDDLEDUCKS PLAYGROUP & MOTHER and TODDLER GROUP**  
Meet at The Champion Hall on Tuesday and Friday 9.30 - 11.25am. All pre-school children and parents/ carers are welcome - children £3.50 per session including snack and drink. Free tea/coffee for adults.  
We will be making Valentine cards this month and sampling pancakes on 20th February. Do come along to join us.


Jill Seaman  
tel 01795 890519  
email jill.b.s@hotmail.co.uk



**STALISFIELD CAROL SINGING**  
50 carol singers raised £196 for Macmillan Nurses on 21st December – an excellent result and an enjoyable evening was had by all. Many thanks to The Plough and Bowl Inns for their warm welcome and to all the hosts who helped support this event, and to Richard Vant who supplied the usual transport by way of his cattle lorry and to Mark Fairhurst who helped to keep order !  
A very Happy New Year to you all – we hope to see you again in December 2007  
Jane Baker/Jenny King

**Charing and District Local History Society**  
On Thursday 8th February at 8pm, Philip Lawrence will give a talk on the A Victorian Farmer and his Household. What was rural life like on Victorian farm. The presentation will be given in the Parish Hall, Charing.  
Everyone who is interested will be welcomed when the doors open at 7.45pm.  
Non-members of the Society pay £2.

**EASTLING VILLAGE HALL**  
To book ring Emma Walker  
on 07940 490 896



A beautiful hall in a lovely village location for your wedding, club, sports or meetings.  
The large hall has pretty grounds, car parking, meeting rooms and fully equipped facilities for professional or self catering occasion.

**FRIENDS of EASTLING SCHOOL**  
Events for this month start with the Eastling School children's **Book Sale** at Pop-In on 7th February 9 - 11am  
**Valentines Disco** on Friday 9th February 6.30pm to 8.30pm - tickets £2.00 on sale from 6th Feb.

**Pancake Day**  
Tuesday 20th February starting at 2.30pm with races and pancakes to buy. Do come along to join in the fun!  
Future dates for your diaries:



**Jumble Sale**  
Eastling Village Hall - Saturday 10th March - 1pm  
**Easter Egg Hunt and Raffle**  
Friday 30th March  
**Race Night**  
(with Painters Forstal Amenities)  
Saturday 31st March - 7.30pm - Eastling Village Hall, £1.00 entry. Horses, Jockeys & Trainers - £2 each. More details to follow.

Jill Seaman, FOES Publicity  
jill.b.s@hotmail.co.uk  
01795 890252



**Mobile Library Open to everyone.**  
The Mobile Library visits Eastling once a fortnight, on Tuesday mornings between 10.50 and 11.05. February dates are 13th and 27th. The van parks in Glebe Cottage and has lift access.  
There is a good selection of fiction and non-fiction books plus audio items. Staff are happy to provide access to the wider network of libraries and archives through reservations for particular items and requests for information.  
For more information phone 01622 605227.

**Coffee Pop-In**  
Come and join us for a chat and a cuppa on Wednesday mornings between 9 and 11am in Eastling Village Hall, no charge.  
Plenty of toys for toddlers to with.

**POP-IN SPECIAL**  
7th February , 9-11am  
Book Sale, Homemade cakes for sale, plus draw of the Valentine's Chocolate Raffle at 10.30am. Pop-In will be open during half term on 14th February.  
Contact number 01795 890338

**Eastling Gardeners' Club**  
meets on 22nd March at 7.30pm in the Village Hall for a talk by J. D. Kemp on

*'The Culture of Vegetables: Colour and Flavour'*  
Followed by wine and home-made nibbles  
Free to members, otherwise £2.50



**Weekly Groups**


|            |                    |         |                       |
|------------|--------------------|---------|-----------------------|
| Mondays    | Prayer Group       | 2pm     | Seven Acres           |
|            | Snooker Club       |         | Eastling Village Hall |
| Tuesdays   | Kung Fu            | 8pm     | Eastling Village Hall |
|            | Bible Study        | 8pm     | The Barn, Pinks Farm  |
| Wednesdays | Pop-In             | 9-11am  | Eastling Village Hall |
|            | Celtic Prayer      | 2.15pm  | Eastling Church       |
|            | Short Mat Bowls    | 2.30pm  | Eastling Village Hall |
|            | Gentle Exercise    | 6pm     | Eastling Village Hall |
|            | Bums, Legs &Tums   | 7pm     | Eastling Village Hall |
|            | Fat burner         | 8pm     | Eastling Village Hall |
| Thursdays  | Dance Pilates      | 9.15am  | Eastling Village Hall |
|            | Prayer /Lent Group | 10.15am | Pinks Farm            |
| Fridays    | Short Mat Bowls    | 2.30pm  | Eastling Village Hall |
|            | Short Mat Bowls    | 7.30pm  | Eastling Village Hall |
| Sundays    | Y Generation       | 6.30pm  | Eastling Village Hall |

**March Good News**  
If you would like to advertise in this magazine, submit articles, features or stories for publication, or would like any forthcoming events publicised, please send your magazine contribution by the 15th February to Hilary Harlow, Pinks Farm, Eastling, Faversham ME13 0BA. Tel: 01795 890338 . Where possible, please submit your entries by e-mail: h.f.harlow@btconnect.com

**WIT & WISDOM**  
Eastling Village Hall  
Saturday 14th April  
7.30pm  
Tables of six can be booked by ringing Norman on 01795 890242. Proceeds to the Eastling Senior Citizens Christmas Fund.

**Painter's Forstal with Ospringe Women's Institute**  
February meeting Tuesday 20th, 2.15pm in the Champion Hall  
Professor S. Field will talk about *The Friends of Canterbury Hospital* Competition - A Humorous Get Well Card, plus flower of the month.  
New members welcome, contact number 01795 532756.



**Valentine's Chocolate Raffle.**  
  
*To boost the Youth Worker fund, we are holding a raffle of chocolates and tins of biscuits. Tickets are 10p each (50p per strip), on sale at Pop-In, The Carpenters Arms, The Bowl, The Pough, The Alma and The George, or from Lorraine on 01795 890719. The draw take place at 10.30am in Eastling village hall on Wednesday 7th February.*

**Afternoon Club**  
February meetings  
1st Lunch at The Alma  
15th Board Games, 2pm in the Champion Hall.

**February**



**2007**

| <b>February</b>                      | <b>Diary</b>                 |
|--------------------------------------|------------------------------|
| 1st Afternoon Club Lunch             | The Alma                     |
| 2nd Craft Club                       | 6.15pm Champion Hall         |
| 3rd Puppet Club                      | 3-4pm Eastling Village Hall  |
| 6th Lent Study starts                | 8pm The Barn, Pinks Farm     |
| 7th Cakes, Books & Raffle draw       | 9-11am Eastling Village Hall |
| 8th History Society                  | 7.45pm Charing Parish Hall   |
| 9th School Valentine's Disco         | 6.30pm Eastling School Hall  |
| 10th Saturday Club                   | 10am Eastling Village Hall   |
| 14th Wit & Wisdom                    | 7.30pm Eastling Village Hall |
| 15th Afternoon Club (Board Games)    | 2pm Champion Hall            |
| 15th Deadline for February Good News |                              |
| 17th Puppet Club                     | 3-4pm Eastling Village Hall  |
| 20th Women's Institute               | 2.15pm Champion Hall         |
| 20th Pancake Races                   | 2.30pm Eastling School       |
| 21st Ash Wednesday Communion         | 7.30pm Eastling Church       |
| 23rd Craft Club                      | 6.15pm Champion Hall         |
| 24th Saturday Club                   | 10am Eastling Village Hall   |
| 27th Magazine folding                | 2pm Pinks Farm               |
| MARCH 10th Jumble Sale               | 1pm Eastling Village Hall    |
| 14th Parish Council                  | 6pm Eastling Village Hall    |
| 22nd Gardeners' Club                 | 7.30pm Eastling Village Hall |
| 30th Easter Egg hunt and raffle      | Eastling School              |
| 31st Race Night                      | 7.30pm Eastling Village Hall |
| APRIL 14th Wit & Wisdom              | 7.30pm Eastling Village Hall |
| MAY 7th Bluebell Walk                | 11am Eastling Village Hall   |