



**Kent Churches Cycle Ride
Saturday 10th September
10am - 6pm**

Please support your local church by cycling, stewarding or sponsoring.
Telephone:
532756 to support Whitehill Chapel
890469 to support Eastling Church
536366 to support Ospringe Church

Whitehill Chapel (Champion Hall) will be open from 10am to 6pm. Tea/coffee and cakes available for families who would like to drop in - not just cyclists.



Young Buds' Summer Workshop

The art and design workshop for 9-16 year olds will be run on Thursdays 4th - 25th August, 2 - 3pm. First one in Eastling Church.

Using your ideas & inspiration the theme "Feed the world, let them know it's harvest time" will be explored & realised through art and flower design. Culminating in an exhibition of your work during Harvest Festival in Eastling Church on 2nd October.

I am only looking for 4 Young Buds, so please contact Lorraine on 890 719 to book your place.



**Young People's
Craft Club**

August 5th

Meet at the Champion Hall at 6pm **if it is fine**, as we have been invited to Eastling - otherwise normal time.

26th August

6.15 to 7.15pm in the Champion Hall, Painter's Forstal.

50p per session.

We welcome all those who are between 7 & 13yrs.

SMILE LINES

What kind of lights did Noah have on the Ark?

Flood lights.

What did Lot do when his wife turned into a pillar of salt?

Put her in the cellar.

What happened to the hyena who swallowed an Oxo cube?

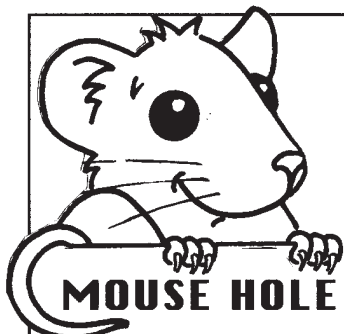
He made a laughing stock of himself.

What's furry and minty?

A Polo bear.

What's black and white and noisy?

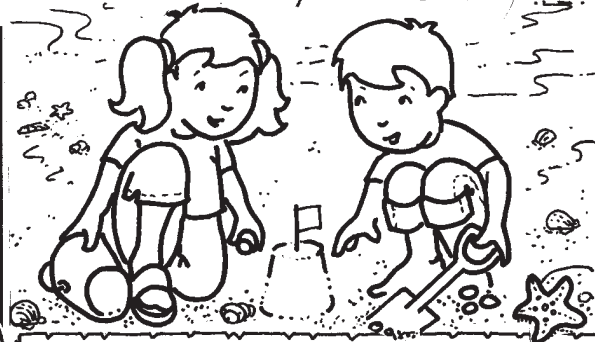
A zebra with a drum-kit.



MOUSE HOLE

Sunny summer sunshine,
Freckles on my nose,
Splashing in the sparkling sea,
Sand between my toes.

Paddling in the rocky pools,
Sky that's blue and clear,
Sun and sea and ice-cream,
The holidays are here!



*He who appoints the sun to shine by day,
who decrees the moon and stars
to shine by night,
who stirs up the sea so that its waves roar -
the Lord ALMIGHTY is his name.*
Jeremiah 31:35

Fruity-Ice

Make 'juicy' ice for your drinks...

Cut slices of fruit, put one in each compartment of an ice cube tray, fill with water and put in the ice-box to freeze overnight.

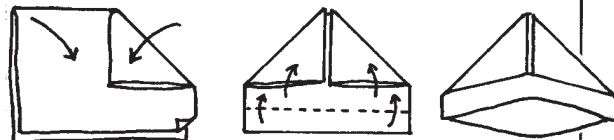
Fruity Juice

For a simple refreshing drink for a sunny summer's day, just mix 1 carton of tropical fruit juice with a 1 litre bottle of lemonade [= approximately half juice, half lemonade].

Add the fruity ice cubes and drink!



Quick and Easy Sun Hat



With one folded sheet of newspaper, fold corners to centre.

Fold up bottom twice on both sides, open up, put on head!

Flying Saucers



Sticky tape or staple together two paper plates.

Hold the rim between your fingers and flick out of your hand to make it fly.

Good News Parish Magazine August 2005



**Ospringe
Summertime Praise**

Sunday 7th August 2005
11am in Ospringe Church.

All denominations welcome for a relaxed time of worship and praise.

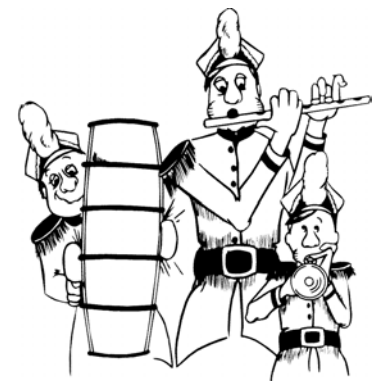
**Stalisfield Village Green
Summer Fête**

Saturday 27th August

2pm - 6pm



Stalls * Competitions
* Refreshments *
* Greasy Pole *
* Tug of War *



Painter's Forstal
Village Amenities Committee

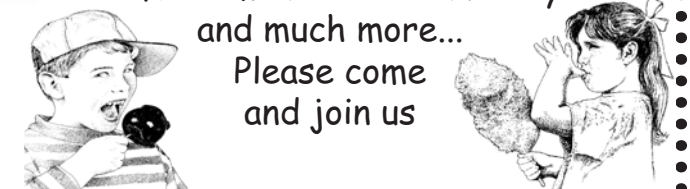
SUMMER FETE

Sunday 21st August
Lorenden Meadow

2pm - 5pm

To be opened by the Mayor and Mayoress of Faversham
Cllr. Mick and Margaret Gates
A.T.C. Band - Flying Fish
Crazy Golf - Bottle Stall
Tombola - Wellie Throwing
Cake Stall - Barbeque
Refreshments - Coconut Shy
and much more...

Please come and join us



FAMILY BARBECUE IN EASTLING VILLAGE HALL

on AUGUST BANK HOLIDAY
MONDAY, 29TH AUGUST 2005
4.00 P.M. until 8.00 P.M. (or later !!)

IN AID OF VILLAGE HALL FUNDS

Meat provided courtesy of
J. C. Rook & Sons, Butchers

Wine, Beer and Soft Drinks on sale
Essential to book please by calling

Sue on 01795 890254

£5.00 ADULT; £2.00 CHILDREN (under 12's)
£12 FAMILY (2 adults; 2 children)



The news magazine for the combined parishes of Eastling, Ospringe, Stalisfield and Otterden

As a retirement project, I decided to enrol as a mature student in the Department of Politics and International Relations at the University of Kent, and I have now been working there for several years. Late last year I had the opportunity to spend a month in South Africa in pursuit of my current research. I visited universities in Johannesburg and Cape Town, interviewing people in politics and academia who had been in some way involved in the enormous changes which took place in the 1980s and early 1990s as the apartheid system was abandoned. I felt privileged to spend time with these people, and especially with the friendly, vivacious, multi-racial students of the Rand Afrikaans University, which had once been one of the bulwarks of the apartheid régime.

What a wonderful country! And what a miracle that, in spite of a painful period which saw much communal violence, such fundamental changes were finally achieved without the civil war which many had predicted would happen. Instead, South Africa went through what has been called a 'negotiated revolution'.

Did you see the recent TV programme, in the Channel 5 series 'Great Ideas which Changed the World', where Archbishop Desmond Tutu spoke on 'Christianity'? His main argument was that Christianity aspires to speak for the poor and oppressed, and that he had seen this as his



The University of Cape Town which is the oldest university in South Africa, is set on the slopes of Table Mountain.

principal duty as a churchman during the apartheid years. Desmond Tutu was one of the iconic figures of those years in South Africa. While F.W. De Klerk, President from 1989 onwards, and Nelson Mandela, whom de Klerk released from prison and who later became the first President of the new democratic South Africa, were occupied with the massive task of political negotiation, Tutu continued to speak up for peace and justice for all. Later, at Nelson Mandela's invitation, he became Chairman of the Truth and Reconciliation Commission, which did so much to heal the wounds of the traumatised country.

We need leaders in our churches who will speak out and advocate the Christian values of peace and justice, and Archbishop Tutu is, for me, an inspiring example. Here is a brief

quotation from one of his books in which he sets out his belief -

'There is a movement, not easily discernible, at the heart of things to reverse the awful centrifugal force of alienation, brokenness, division and disharmony. God has set in motion a centripetal process, a moving towards the center, toward unity, harmony, goodness, peace and justice, a process that removes barriers. Jesus says, "And when I am lifted from the earth I shall draw everyone to myself" as he hangs from His cross with outflung arms, thrown out to clasp all, everyone and everything, in a cosmic embrace, so that all, everyone, everything, belongs. None is an outsider, all are insiders, all belong.' *

Words inspired by the particular circumstances of South Africa, but surely applicable everywhere, and especially at the present time when the challenge of ending poverty in Africa is receiving so much attention. Gordon Brown echoed Archbishop Tutu's sentiments in a speech in Edinburgh on July 3, shortly before the G8 summit meeting, when he said -

'Is it not a moral sense in each of us that feels the pain of others and believes in something bigger than themselves, that calls us to answer the needs of the needy, the suffering of the sick? We are one moral universe ...'

Not everything in the South Africa of today is perfect, of course. But in my brief visit I found, and continue to find, inspiration in the way in which the people of that country worked out in the practice of daily life their own interpretation of these principles.

Graham Galer

*' No Future Without Forgiveness' , published Doubleday 1999

Sing Hosanna!

Some people don't feel they can sing loudly in church, as they find keeping in tune difficult. This poem is dedicated to them.

*Praise the Lord in merry song,
Praise him, praise him all day long.
But what of me? I cannot sing –
I have no melody to bring.
But in the Bible, joy of joys,
The Lord says: "Make a joyful noise!"*
Anonymous

As we celebrate the School Holidays with our youngsters this Prayer is from our M.U. Prayer Diary, 6th July:

"Thank You Lord for this day opening before me. Give me grace to look for Your blessings in everything I do and everyone I meet today. Help me to be filled with Your new life and share it with others".

I had used that prayer on Thursday 7th July as I set out with the 32 from Hazebrouck for a day visit to London. We witnessed the wonderful order, help and efficiency of all, especially the Services. I have just watched the vigil on 14th July in Trafalgar Square at noon and reflected that, at the same time, a week earlier I had eaten my picnic there, in the spitting rain with just a few there and the quietness of the London streets except for taxis and folk walking purposefully. We were the fortunate ones.

Did you watch the Songs of Praise from the Garden of England broadcast on Sunday, 26th June? Vicky and Lauren were delighted to catch "glimpses" of



the three of us singing heartily! We have sung the descant to *Morning has broken* for two weddings and hope to sing the other descants for services soon.

For Sunday, 10th July, the theme was "The Sower" and Jacqui had chosen some fine hymns including *We Plough*. The Choir introduced the congregation to *Shalom*, by Andre Clay, and many joined in the chorus as they had the music copies too. After the Blessing Lauren sang *I watch the sunrise*, Carly and Mark have requested this for their wedding on 23rd July. Fortunately they started the preparation for their wedding a year ago as it took me 6 months to locate the music. It was one we used to enjoy singing at Ospringe School with Mr Shepherd and Carly and her Mum remember it bringing tears of joy to them. It is also one Revd. Pat likes. *We must sing it for you Pat, glad you are making good progress too.*

Many of you know of my admiration for the etchings and paintings of Graham Clarke. I was given a book with his watercolours to illustrate the writings of a Deputy Head Teacher, Peter Smith, who is sharing his Christian faith in "Tracks Across the Beach". I found it very helpful. Vicky Shepherd

FROM THE ORGAN SEAT

It is great to have Anthony helping, thank you. He felt nervous playing his first accompanied hymn, but the congregation sang well for him.

In June I was in Amsterdam and visited Oude Kerk where Rembrandt's wife is buried. It is also the church where Jan Pieterszoon Sweelinck (1562 - 1621) was Organist from the age of 18! He was a great teacher and his music has come to us through his pupils, one of whom was the great Johann Sebastian Bach! The church is vast and airy and has two organs; a magnificent West End one and the smaller one, on the North Chancel wall, is approached by steps and has a pipes' case which opens out when the instrument is being played. It was a very pleasant sound and while I was there, I listened the organist from the new church who was playing Sweelinck!

On 24th June, Ospringe Church was the venue for a wonderful recital by our new Assistant Organist at Canterbury Cathedral, Robert Patterson. His programme delighted all 55 of us. Guilmant, March on a theme of Handel (Lift up your heads); Languis, Chant de Paix; Durufle, Prelude and Fugue; Vaughan-Williams, Rhosymedre;

J.S.Bach, Komm Heiliger Geist; An Wasserflüssen Babylon, and Komm Schopfer Gott. The recital continued after a short stretch of our legs as it was that hot evening with the thunder rumbling around! J.S.Bach, Piece d'Orgue; Moore, Lento (Philip Moore influenced Robert when he was Organ Scholar at York); Vierne, Legende, Madrigal, Lied; Hymn au Soliel.

Afterwards Robert and his wife, Emma, mixed with guests whilst enjoying the refreshments. They are a lovely couple. Robert's CV is very impressive and Emma enjoys singing, especially Baroque songs, and she teaches Primary children at St. Edmund's School.

I would like to thank my friends in Kent County Organists for joining us and to our friends in Ospringe for supporting and helping with this lovely evening. Here's to the next Organ Recital at Ospringe!

I want to thank the M.U. Diocesan Committee for organising the coaches to the M.U. Rally/AGM at Ipswich Football Stadium and for including Brenda, Carol, Peggy Partis and me. It was a wonderful day shared with 4000 other M.U. world-wide members. I continue to be most impressed with the work of M.U. God bless you, Vicky Shepherd.



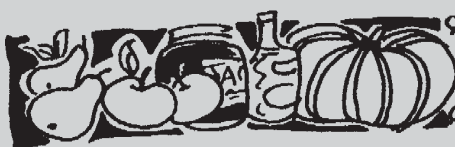
Holy Cross, Hoath
Picture by Ron Hoggarth

KENT CHORALE sing

EVENSONGS on Wednesdays at 7.30 p.m. at Dover College Chapel, on 3rd August, St. Mary the Virgin, Minster, Thanet on 17th, Holy Cross, Hoath on 24th August. Saturday, 3rd September at 7.30 p.m. a Recital at All Souls, Cheriton Street.



Prayer Pointers August 2005



Advanced Notice Harvest Thanksgiving

Saturday 1st October
decoration of Whitehill Chapel between 2 and 4pm.
Gifts of produce / tins / flowers would be welcome.
October 2nd
10am Brunch
10.40am Harvest Thanksgiving followed by sale of produce in aid of British Humanitarian Aid



- Sundays For a sense of peace in times of change.
- Mondays For safety and refreshment for those on holiday.
- Tuesdays Organists and choirs in the benefice.
- Wednesdays Magistrates courts in the local area.
- Thursdays Church holiday clubs.
- Fridays Those suffering after the London bombings.
- Saturdays For greater church unity.

Picture Framing

THE FRAME WORKS
Quality picture framing at affordable prices. Seven years framing experience in Faversham

Discount Given to Artists and Trade
Wide range of mouldings and mounts available

A large selection of Prints to choose from

For consultation and advice contact Teresa Owen on
01795 538 315
07971 513 993

SWALE'S PREMIER UPHOLSTERERS

SITTING PRETTY

Sofas and chairs renovated or made to order
Loose covers and curtains
Large range of fabrics

Traditional antique restoration
Spring repairs
Cushion replacement

Domestic - Contract - Insurance work - Free quotations

TELEPHONE: 01795 669735
email: sittingpretty@blueyonder.co.uk

UNIT 4 PHASE 2, NEW ROAD INDUSTRIAL ESTATE, SHEERNESS, KENT ME12 1DB

EDMED COAL DELIVERS IN YOUR AREA

SUMMER PRICES

OPEN FIRES	£	MULTI FUEL BURNERS/COOKERS ROOM HEATERS BOILERS	£
House Coal	10.15	Maxibrite	12.70
Large Coal	10.30	Anth Stove Nuts	12.30
HomeFire	14.20	Newflame	12.70
Newflame	12.70	HomeFire	14.20

GRAVITY FED BOILERS
Anth. Peas/Grains £11.50

All prices are for a 50Kg bag, delivered and inclusive of VAT

DISCOUNTS AVAILABLE

Tel/Fax: 01795 890609
Freefone: 0800 0852029
e-mail: edmedltd@edmedcoal.co.uk

FAVERSHAM PET SITTERS

On Holiday? At Work?
The next best thing to caring for your pets yourself.

Daily Visits for most pets - cats particularly are much happier being cared for in their own home.

Dog-walking Service
Visit our website, or contact us for a leaflet:
Tel: 01795 531212
Email: pet.sitters@virgin.net
www.pet.sitters.btinternet.co.uk
Insured & Registered

Services in our Benefice

Sharing Ministry in our Benefice

31st July 10th Sunday after Trinity
 Stalisfield 10.30 a.m. Holy Communion (CW)
 Benefice Service
 Eastling 2.30pm Baptism
 Ospringe 4 p.m. Service of Healing and Blessing

Tuesday 2nd August

Whitehill Chapel 2.15 p.m. Holy Communion

7th August 11th Sunday after Trinity

Romans 10. 5 - 15, Matthew 14. 22 - 33
 Ospringe 8 a.m. Holy Communion (BCP)
 Ospringe 9.30 a.m. Morning Prayer (BCP)
 Eastling 10 a.m. Holy Communion (CW)
 Whitehill Chapel 10 a.m. Brunch followed by
 10.40 a.m. Family People's Choice
 Ospringe 11 a.m. Summertime Praise
 Otterden 3 p.m. Evening Prayer (BCP)
 Ospringe 3 p.m. Baptism

14th August 12th Sunday after Trinity

Romans 11. 1 - 2a, 29 - 32, Matthew 15. 21 - 28
 Eastling 8 a.m. Holy Communion (BCP)
 Stalisfield 10 a.m. Morning Prayer (BCP)
 Ospringe 11 a.m. Holy Communion (CW)

21st August 13th Sunday after Trinity

Romans 12. 1 - 8, Matthew 16. 13 - 20
 Ospringe 8 a.m. Holy Communion (BCP)
 Stalisfield 10 a.m. Holy Communion (CW)
 Eastling 10 a.m. Holy Communion (CW)
 Ospringe 11 a.m. Family Service + Baptism

28th August 14th Sunday after Trinity

Romans 12. 9 - end, Matthew 16. 21 - end
 Stalisfield 8 a.m. Holy Communion (BCP)
 Ospringe 11 a.m. Family Communion
 Ospringe 11 a.m. Sunday School
 Whitehill Chapel 11 a.m. People's Choice

4th September 15th Sunday after Trinity

Romans 13. 8 - end, Matthew 18. 15 - 20
 Ospringe 8 a.m. Holy Communion (BCP)
 Ospringe 9.30 a.m. Morning Prayer (BCP)
 Eastling 10 a.m. Holy Communion (CW)
 Whitehill Chapel 10 a.m. Brunch followed by
 10.40 a.m. Family People's Choice
 Ospringe 11 a.m. Oasis
 Otterden 3 p.m. Evening Prayer (BCP)
 United Church, Fav. 5 p.m. Hop Festival Praise Service

Priest in Charge Reverend Penny Fenton (01795 536366)
 9 Brogdale Road, Faversham. ME13 8SX
 Curate Reverend Angela Cheeseman (01795 890629)
 (Eastling & Stalisfield) New House Farm, Eastling. ME13 0BN
 Reader Mr. Hugh Perks (01795 890603)
 Weald Cottage, Kettle Hill Road, Eastling.
 Reader Mr. Norman Fowler (01795 890412)
 4 Meesons Close, Eastling.
 Methodist Minister Reverend Philip Barker (01227 463180)
Churchwardens
Ospringe Miss C. Brightman (01795 531960)
 Mr. P. Larter (01795 531044)
Eastling Mr S. Youle (01795 890368)
 Mrs. A. Smith (01795 890469)
Stalisfield with Otterden
 Joint Warden Mrs. J. Baker (01622 858332)
 Mrs S. Gaind (01622 858551)
Whitehill
 Steward Miss. B. Richards (01795 532756)

Contacting the Church's staff

For general enquiries and for specific enquiries about Baptisms and Weddings, please telephone Faversham 536366. If you would like the parish staff to conduct a funeral, either in our churches or elsewhere, please ask the funeral director to make the necessary arrangements.

From the Registers

Baptisms

JAKE ARMSTRONG JAMES Hymers
 at Ospringe on 25th June 2005

ELIZABETH EMILY Swatland
 at Otterden on 3rd July 2005

HARVEY Graham
 at Ospringe on 17th July 2005

Weddings

Richard Anthony SPRINGETT and
 Charmain June CLEAVER
 at Ospringe on 2nd July 2005

Matthew George DANE and Annika Lucy INGE
 at Ospringe on 2nd July 2005

Luke Miles ALEXANDER and Sarah Louise KNIGHT
 at Otterden on 16th July 2005

Funerals

Arthur Frederick Ford BRITTEN
 Cremation at Barham on 28th June 2005

Interment of Ashes

William Henry (Bill) MATTHEWS
 at Love Lane on 1st July 2005

Eastling Neighbourhood Watch.

Contact numbers:
 Swale NHW office 0808 100 3308 (free)
 Crimestoppers 0800 555 111 (24 hours, free and anonymous)
 NHW liaison officer 01795 584143
 Sittingbourne police station 01795 477055
 Emergencies or crime in progress always use 999
 Kent Trading Standards 08457 585 497

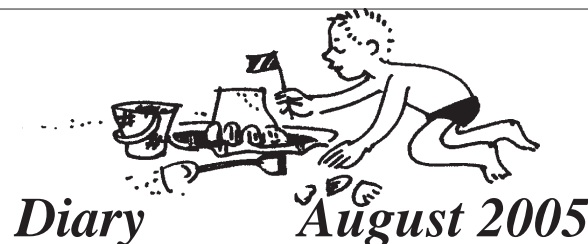
There have been warnings recently about phone and e-mail approaches from Nigerian companies asking for bank details to set up UK branches. This is now also being tried by a Hong Kong based company who is offering part time UK employment opportunities. Police advice is to ignore phone calls and to delete e-mails and do not follow links to their website.

A campaign to use mobile phones to help identify victims of accidents and disasters has been initiated by a Paramedic in the East Anglian Ambulance Service. This was prompted by the bomb attacks in London on 7th July. Mobile users are being urged to enter a number in their phone's memory under the heading **ICE** (In Case of Emergency). Paramedics or police would be able swiftly to find the number and use it to contact a relative or friend who is able to identify the victim and give them vital personal information, including details of any medical conditions.

Eastling Neighbourhood Watch messages are also posted on the village notice boards (at the Village Hall and the Parish notice board in The Street).

The Lorenden Trust Summer 2005

For the last 15 years the Lorenden Trust has encouraged local people to walk unrestricted through its pleasant parkland. Now we are having to implement plans to encourage and protect the wildlife found there. With the numbers of people walking through with their dogs we are now requesting that dogs be kept on leads and under control by their owners. This will help protect many of the different species of wildlife, animals, birds and plants already inhabiting there. With these measures we hope that the Trust will go from strength to strength for local people to still enjoy the beautiful parkland surroundings.



Diary August 2005

4th Afternoon Club 2pm Champion Hall
 5th Craft Club 6.15pm Champion Hall
 8th Gardeners' Club 7pm Ouden, Brogdale Rd.
 9th W.I. 2.15pm 34 Lower Road
 15th Deadline for September Good News
 18th Afternoon Club 2pm Champion Hall
 21st Painter's Forstal Fête 2pm Lorenden Meadow
 26th Craft Club 6pm Champion Hall
 27th Stalisfield Fête 2pm Stalisfield Green
 30th Magazine folding 2pm Usual venues
SEPTEMBER
 6th Bishops' Evening 7.30pm Eastling Village Hall
 7th Pop-In reopens 9 - 11am Eastling Village Hall
 7th Paper Shredding 9.30am and 7 pm Eastling Village Hall
 7th Ospringe Parish Council
 10th Cycle Ride around Kent's Churches 10am - 6pm
 21st Ospringe in Bloom Awards
OCTOBER 8th Autumn Feast Painter's Forstal
NOVEMBER 12th Craft Fayre Painter's Forstal

Eastling Parish Council

On 13th July 2005 the Parish Council held its regular bi-monthly meeting. The Chairman reported that, under terms of the Clean Neighbourhoods and Environment Act 2005, the Parish Council now has powers to issue fixed penalty notice for certain anti-social acts. These include dog-fouling, depositing litter, fly posting and graffiti. The fixed penalty is £75.00.

As a result of the recent Ofsted report, Eastling Primary School would be the subject of "special measures". The Chairman explained the significance of this decision and the likely impact on the school.

The Treasurer gave a detailed financial appraisal and it was agreed that a donation of £25.00 be made to Technology Enterprise Kent towards their "Awards for Excellence" gala event to be held later in the year.

Kent Highways Services has introduced a "County Lengthsman Scheme" in an attempt to improve the services offered by the authority to rural communities. This work involves reporting to the authority the perceived need for certain types of work to be carried out. Examples cited included cleaning and fixing signs, tidying up verges, cutting back hedgerows to improve visibility lines, minor kerb repairs, odd pavement slab repairs, painting guard rails and any other highway related matters. The Clerk offered to perform this function for a limited period.

Cllr. Bikerdike advised the meeting that the measuring device, installed to monitor speed levels in The Street prior to the possible imposition of a 30mph limit, has been removed and he is awaiting the report, due by the end of July.

John Darlington has offered to produce a village sign which, was felt, would enhance the village. The Council is happy to accept this offer and has invited Mr. Darlington to submit his concept.

"CARNALEA"

RESIDENTIAL HOME FOR THE ELDERLY

24 hour care by competent staff in a warm, comfortable friendly atmosphere. Long and short stay welcome. Single and shared rooms some with en-suite. Lift to all floors. Wholesome and varied home cooking, special diets catered for. Doctors, chiropodists, hairdresser, clergy and library attend. Various activity and entertainment lounges and outings. Large pleasant garden.

5-9 London Road, Faversham, Kent. ME13 8TA
Telephone: Faversham 532629

High quality tiles for walls and floors. Beautiful and practical for luxurious interiors and outdoor spaces.

Find us at Macknade next to the Fine Food Shop

art
function
TILES

Art plus Function
 Macknade Field, Selling Road,
 Faversham, ME13 8XF

Tel: 01795 530400
 Email: paolo@artplusfunction.co.uk

~~~~~  
 (BCP) Service taken from the Book of Common Prayer, 1662.  
 (CW) Service follows Common Worship Liturgy, 2000



# EASTLING VILLAGE HALL

**Marquee** - some of you may already have seen the large Marquee that the Trustees of Eastling Village Hall have purchased in conjunction with the Parish Council. This is a wonderful addition to the facilities of the Hall and will be perfect for summer weddings and parties. The Marquee will also be available for hire off-site for private parties within the village, charges ranging from £60 to £85 depending on location. For further details, please contact Tony Stephens on 890010.

**Waste Paper, Cardboard** - The income raised from the waste paper collection has helped fund the Trustees' share of the cost of the marquee, but more paper, and more funds are required. There are four recycling bins in the car park at the Hall for waste paper and cardboard and the quicker we can fill them the better. The Trustees are always looking at ways to improve the Hall, offer better facilities etc. One way that the people in the village can help both the Trustees and the environment is to put all your waste paper, cardboard boxes etc in the bins. PLEASE PUT ALL YOUR WASTE PAPER, CARDBOARD BOXES ETC INTO THE BINS PROVIDED. The bins are emptied fortnightly, but we can arrange to have them emptied more often if required.

**Paper Shredding** - We all get lots of junk mail and need to turn out drawers from time to time to get rid of old correspondence. The need to dispose of confidential papers in a secure way is paramount and the dangers of identity theft are well known. The Trustees have considered acquiring a community shredder for the village, whereby residents can ensure that all confidential papers are shredded and disposed of in a safe way. As a trial to determine whether this facility would be useful, we have arranged for several shredders to be available in the village hall on Wednesday, 7th September between 9.30 and 11.30 a.m. and again between 7.00 and 8.00 w. Bring your old correspondence along for shredding (a Trustee will be in attendance) and let us know whether you would use such a facility on a regular basis. The shredded paper will go into the recycling bins, so you will also be supporting our waste paper collections and generating extra income for the Hall.

## Having a Party?

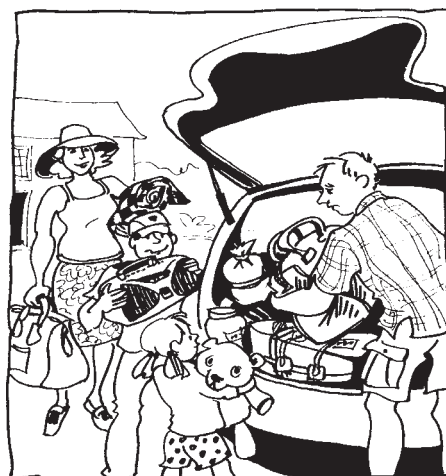
### Planning a Wedding?

#### Venue for your Club ...

Hall and smaller rooms available with kitchen facilities at

### Eastling Village Hall.

For more information contact Mr Tony Stephens on 890010.



## Friends of Eastling School

What a glorious day we had for the Summer Fete, which was opened by the Mayor of Faversham. The total of £1500 has been put towards the purchase of a stage for the school hall, put to good use already for the Class 4 production - A Victorian Extravaganza. The FOES Committee are busy planning events for the Autumn Term, starting with a Wine & Wisdom evening in late September. We will be holding a Halloween Disco in October; Family Skating and the Christmas Shopping Evening in November, ending the term with the children's Christmas Shopping Afternoon and School Christmas Disco in December. Confirmed dates and details to follow. Jill Seaman, FOES Publicity 01795 890519.

# August



2005

## Ospringe School Association

The end of term has been its usual busy self. The summer fair raised over £1000 towards the new computer suite and the mini fete raised over £300 for Cystic Fibrosis. Year 6 have had a very busy time, their production of Wind in the Willows entertained a packed hall, and then most of them departed for an action packed week at The Swattenden Centre near Cranbrook. They returned just in time for a "new look" sports day, family BBQ and giant balloon release. Term ended with a "sixties" disco and two assemblies!

The first was for the year 6 leavers to say goodbye, and the second was for the school to say goodbye to Miss Petrie, who is leaving after a year as Acting Head to take up her own Headship in Challock. She is leaving the school in the capable hands of Mrs Ralph who has been acting Deputy Head for the past year.

That is all for this school year. I hope you all have a great summer. Jill Fagg

## Painter's Forstal Gardeners' Club

Monday 8th August  
Social Evening at 'Ouden',  
Brogdale Road, by kind invitation  
of Dr and Mrs Moskovits  
(Paul and Frances),  
7pm onwards.

Further details from  
Faversham 533608.

## Painter's Forstal with Ospringe W.I.

August meeting on Tuesday 9th,  
2.15pm  
Garden Meeting at 34 Lower Road  
Phone 532756 for further information.

## PUDDLEDUCKS PLAYGROUP

On the last Tuesday of the Summer term, the playgroup had a party for the four children leaving us to start school in September.

We will have vacancies on all days (no playgroup on Wednesdays). Please phone for details. Jill Seaman, Playgroup Manager. 01795 890519

## September Good News

If you would like to advertise in this magazine, submit articles, features or stories for publication, or would like any forthcoming events publicised, please send your magazine contribution by the 15th August to Hilary Harlow, Pinks Farm, Eastling, Faversham ME13 0BA. Tel: 01795 890338. Where possible, please submit your entries by e-mail: h.f.harlow@btconnect.com Current and back copies of Good News are available on the website: <http://go.to/goodnewsmag>

## Wayne Delaney Reliable Carpenter/Joiner

All aspects of joinery undertaken to a high standard

Please call 01795 537525  
or 07870 910526  
email: sidoniemudge@hotmail.com

Streams of Healing Water  
Service of Healing Prayer  
and Blessing  
Ospringe Church  
Sunday 31st July  
at 4.00pm.

Guest Speaker:  
Revd. Amanda Evans,  
Chairman of the Canterbury  
Diocesan Fellowship for  
Healing and  
Wholeness

## Afternoon Club

August 4th - Board Games  
August 18th - Bingo  
2pm Champion Hall,  
Painter's Forstal

## Summer Fete

### at Lorenden Meadow

Thank you again to those who have volunteered help. We would welcome gifts for the bottle tombola (anything from tomato ketchup to something strong!), cakes, children's toys/games/ puzzles for the Children's tombola.

## £100 DRAW

Have you bought your  
ticket for this year's draw?  
If not ring 532756.

★ Free ★

to anyone interested:  
some treasures from our garage.  
Lady's Ellemme Wayfarer bicycle,  
Melamine top kitchen table,  
child's high chair, Davos Superior  
toboggan, small luggage trolley,  
pair of plastic oars, books.  
Phone 01795-890780

## RICHARD HADLEY

Brickwork and flintwork restoration to period properties in traditional lime mortar. Traditional methods, materials and craftsmanship

Telephone: 01795 591424  
or 07929 769378

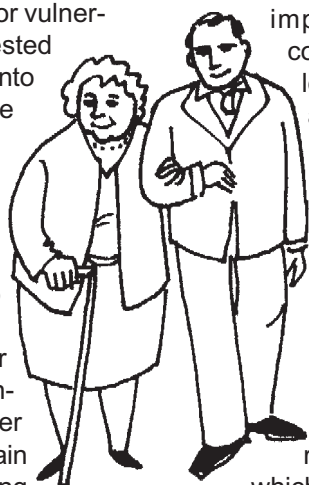
E-mail: [rjhadley-limeworks@yahoo.co.uk](mailto:rjhadley-limeworks@yahoo.co.uk)

## "I'd rather stay in my own home"

That's what many old, disabled or vulnerable people say when it is suggested that they should consider going "into care". But the option may be denied them if their home is falling into disrepair and lacks the facilities they need.

Home Improvement Agencies (HIAs) offer valuable services to help such people repair, improve, maintain or adapt their homes. Funded in part by government, HIAs last year helped over 40,000 vulnerable people to remain living independently, by assisting them to make over £91 million worth of improvements and adaptations.

The help comes in several different forms according to the situation. Sometimes there is a need to review all housing options, including advice on legal entitlements, welfare benefits, financial matters and other support services. It may turn out that the cost of repairs or



improvements may be covered by a grant from the local authority, or a charity, as well as from their home insurance, savings or through equity release schemes.

Home Improvement Agencies offer truly independent advice and can give practical help, such as filling in forms or checking that clients are receiving all the benefits to which they are entitled.

Then there are technical issues: many clients are apprehensive about managing any work that needs to be done. A local HIA (there are nearly 300 of them) can offer guidance on what work is needed and provide assurance that any repairs undertaken will be done properly, to budget and on time. Some have developed 'handy person' schemes to

carry out small repairs and hospital discharge schemes. Also within the remit of HIAs are security and crime-prevention measures, safety advice to prevent accidents, and showing householders how to keep the home warm affordably.

The co-ordinating body for HIAs in England is called Foundations. To find out whether there is a Home Improvement Agency in your area, contact Foundations at Bleaklow House, Howard Town Mill, Glossop SK13 8HT. Telephone 01457 891909, email: <foundations@cel.co.uk>, website <[www.foundations.uk.com](http://www.foundations.uk.com)>.

Swale has a 'Staying Put' scheme run from Swale Council on 01795 417131. Faversham Assistance Centre (FACE) runs a practical help scheme. Tel. 01795 535580 or call into the office, located at the rear of Age Concern, behind Fuller's the builders, next to the Age Concern Shop.

This year Staying Put in partnership with other agencies will be holding their

## Living in Safety

event in Faversham on  
4th October from 10.30am till 2pm at the Alexander Centre, Faversham.

This event offers advice for over 60's on living a safe, independent and healthy life.

Included are demonstrations and the chance to take part in New Age Curling and Graceful Fitness classes. As well as prizes, displays, freebies and health checks. Healthy food tasting will be available from midday. It will be a chance to obtain lots of information on the services available to the over 60's and ways of making them live safe, healthy and independent in their own homes.

For more information contact Staying Put at Swale Borough Council on 417131.