

## Teenagers' Youth Club

(To be known as PFY)

7.30pm

in the Champion Hall  
meeting every  
fortnight; 30th March,  
13th and 27th April.

## 8 - 12 Youth Club,

50p per person

Crafts: April 6th

Games: April 20th

This will now be from 6.15pm -  
7.15pm, in the Champion Hall

## Youth Pilgrimage

16th April 2001

in Canterbury Cathedral  
at 12 noon

**V.R**  
**YOU-MIQUE**

"In God's Image"

The Service in the Cathedral is at 12 noon and the Archbishop of Canterbury is giving the talk. This year Church groups are asked not to use footpaths because of the foot and mouth outbreak and are making their way to the Canterbury on public transport or in cars. A procession will leave the Westgate Gardens at 11.15am to walk to the Cathedral. All are welcome.



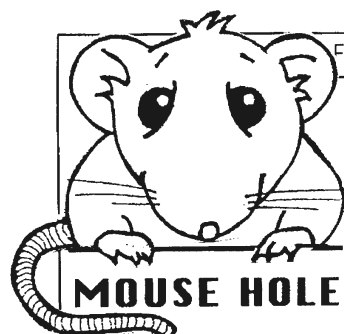
'All part of the service!'



**Ospringe** Sunday School will meet in Ospringe Church during the 11am Communion service on Palm Sunday, 8th April and 15th, Easter Day.

**Painter's Forstal** Sunday School meets at Whitehill Chapel, 11am on 1st April and 10.40am on 6th May.

**Eastling** Sunday School meets at 9.50am in Eastling Village Hall on 1st April and then not until 20th May.



## Easter Nests

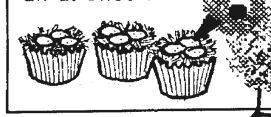


- Melt 110g/4oz of chocolate in a bowl in a pan half filled with hot water.

- Mix in 3 crushed Shredded Wheat or 150g/5oz of corn flakes until all coated with chocolate.

- Spoon the mixture into paper cake cases and press in the middle with a teaspoon to make a nest shape.

- Leave to set then fill with your sweet eggs....Don't eat them all at once!



From my home in the church I learn about all sorts of things...

## Jesus is alive !

When the women arrived at the tomb two days after Jesus had been buried they did not expect to see that the large stone sealing the entrance had been rolled away. What really frightened them was the young man dressed in a white robe sitting in the tomb. He said "Don't be alarmed...Jesus has been raised...He is going to Galilee ahead of you; there you will see him, just as he told you."



Read the Gospel accounts of Jesus' resurrection in **Matthew 28:1-9**, **Mark 16:1-13**, **Luke 24:1-49** and **John 20:1-29**. Who rolled the stone away?



Eggs and chicks are a sign of Spring and a symbol of new life...try making your own fluffy Easter chick.

1. Cut two rings out of cardboard and wind yellow wool around and through until you can't wind any more.

2. Cut between the rings then tie in the centre with a length of wool.

3. Pull the cardboard off and fluff up into a pom-pom. Make another smaller one for the head. Sew together and add eyes and beak of glued on card.

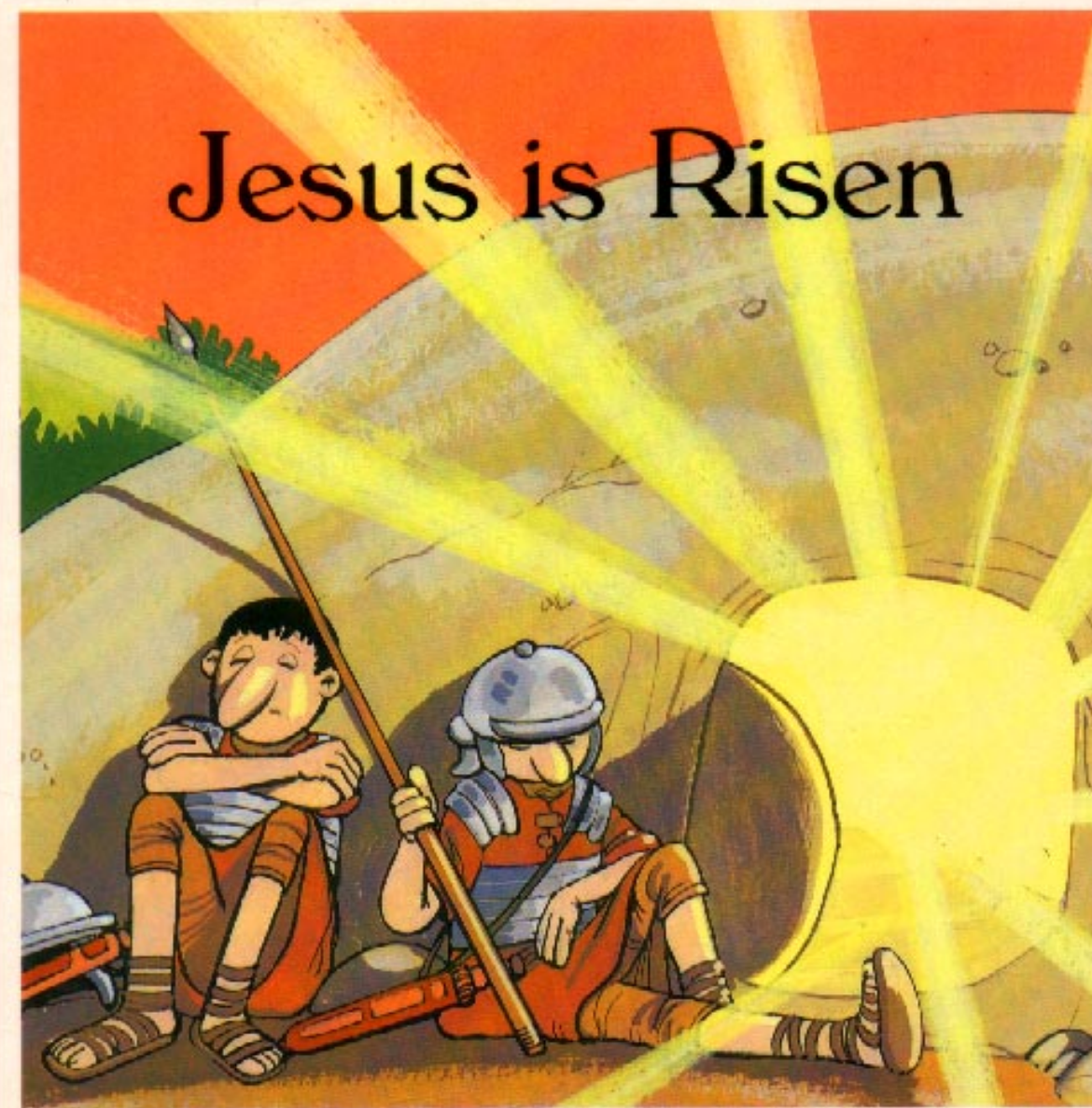


Jesus is Alive !  
Jesus has  
set us free !  
Alleluia.

# The Good News

## for April 2001

## Jesus is Risen



© Kevin Mayhew Ltd. Licence no 103032

## Easter Services

8am Holy Communion at Ospringe  
10am Holy Communion at Stalisfield  
10am Holy Communion at Eastling  
11am Holy Communion at Ospringe

The news magazine for the combined parishes of Eastling, Ospringe, Stalisfield and Otterden

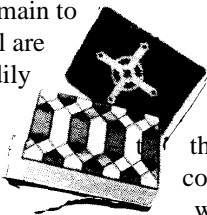
Message for the Month

Beginning with sunrise or 'dawn' services held in many places, Easter is the most holy day in the Christian faith. It is the day, Christians believe, when a crucified Saviour arose from the dead, assuring those who follow of forgiveness of sin and of eternal life. Why, then, is the cross the pre-eminent symbol of Christianity? Why not an open tomb, or the rays of the rising sun? Perhaps at least part of the answer is that the cross - a place of suffering and humiliation - strikes chords in the human condition. We, all of us, know or will know hurt. The scourging and the thorns and the painful lonely spectacle are not alien to us. They are much of the stuff of mortal life. Just as Christmas is accessible to our imaginations because everyone is born, the Crucifixion, at least on one level, is an event understandable because each of us sometimes agonizes. But *resurrection* - that is something outside our experience. That is - dare we utter the word? - supernatural.

Ospringe Kneeler Project Update

It is just over a year ago, that we ordered the first 20 kneeler kits, and got our project underway. I am so happy to tell you that in that time a total of 83 kneelers have been ordered and that 60 have been completed and are being used now in Church. Of those that remain to be completed I know that several are almost finished. So we are steadily adding to the number.

The total cost involved so far is £1989.95, and I am very glad to tell you that the total sum has now been paid. With the help of the PCC who advanced the money for each order, and through the generosity of our Church members and friends, and some fund raising, we have been able to repay all outstanding balances.



So that's why there is a kind of hush in believers' souls, and in many of those searching for faith, on Easter Day. It is the sound of 'searching silence' - an attempt to grasp the ungraspable - that a man both like and unlike us, died, was buried, conquered death on behalf of billions yet unborn, then took off his burial shroud to walk once more in the land of the living. Of course, the Easter story didn't pioneer events beyond our normal understanding. The whole drama unfolded during Passover, celebrating the time that the death angel spared Jewish households that marked their door frames with the blood of a lamb. But even angels are easier to comprehend than 'undying'. Spring helps. From nature come illustrations of new life. Empty dawns fill with bird song. Fields and trees, bare and brown, erupt into flowers and green leaves.

I would like to say a very big thank you to all who got involved in supporting this project, either by a donation or by carrying out the work. We have had many busy willing hands, and the result of their work is there for all to see in Ospringe Church. There have been many favourable comments. I believe that the choice of Cardinal Red as our main colour, was certainly the right one, and with all the other lovely colours in the patterns, they add a very warm and rich glow.

For the time being it has been decided to call a halt and take a breather, until the remaining ones are completed, and once in position we can decide whether any more

The season helps our faith, with its parables of new life, new growth. But Spring itself is not Easter. It is not a substitute for Easter. On Easter Day, in small country churches and mighty cathedrals, millions of people will exercise a wonderful, irrational faith. They will resist what a writer called 'the strange and perverse disinclination to believe in miracles'. They will imagine Jesus' empty tomb. And in so doing, they may see that a cross, viewed from a certain angle, looks much like a key. Happy Easter to you all. The Revd. Penny Fenton.

Prayer Pointers April 2001

Sundays	For a sense of Resurrection Joy.
Mondays	Loved ones and friends for whom Easter has no meaning.
Tuesdays	For all clergy at this busy time.
Wednesdays	The Easter Youth Pilgrimage.
Thursdays	The teaching profession.
Fridays	Those fighting against drug traffickers.
Saturdays	New converts to Christianity.

are needed. In due course we may decide to do some new ones for the Hart Chapel, and in that case, we would do them with blue as the main colour as they are now.

Thank you once again, everyone, I think that it is a wonderful achievement, and I know that it has given a great deal of enjoyment to many people over the last year. At the same time, we have been able to use the gifts that God has given us to glorify Him and beautify His Church.

May God Bless you all  
With Love, Pam

OSPRINGE CHOIR REPORT

We will continue to have short Choir Practices before the Services, 10.25 a.m. for 10.30 a.m., on the 1st, 2nd and 3rd Sundays in April. Passion Sunday is 1st April and Morning Prayer; 8th April is Palm Sunday, a Communion Service with distribution of Palm Crosses and 15th April is Easter Sunday and a Communion Service; 22nd April is the Family Service and 29th is a Benefice Service at Eastling at 10.30.a.m. We have had a good 10 minutes and have prepared "All in the April Evening" and Bob Chilcott's "The Irish Blessing". Carolynne Brightman and I went to Bob Chilcott's Workshop at Simon Langton Boys School in February and I learnt much from his teaching of "The Irish Blessing" and have tried to pass on the nuances to the Choir. See what you think. We also sang "Danny Boy" arranged by Bob Chilcott and "Home is a special kind of feeling" by John Rutter as well as some great exercises. This John Rutter piece was new to me and another of his masterpieces.

The second Choir Pew Runner is on order. Thank you to those who have supported my efforts. I hope for a grand celebration when both are on the Pews. Perhaps I can attract former members of the Choir from my time as your Choirmaster, and long before, for a BIG DO!

*We send our prayers and thoughts to our Farming Community with all the devastation they are facing. This prayer was in the Church Missionary Prayer Paper for February and I would like to share it with you.*

*"O God of Goodness, in the mystery of natural disasters we look to Thee, trusting that there is an explanation that will satisfy our minds and hearts. Accept our compassion for our fellow men, our desire for their relief, and our hope for knowledge that will control the forces of nature. Help us to help Thee complete Thy universe, O Creator Father, to remove its flaws, so that we may be sub-creators with Thee of the Kingdom of Thy love in Jesus Christ. AMEN.*

*(A Prayer on learning of disastrous floods in Bangladesh, "Jerusalem Prayers", George Appleton, S.P.C.K.)*

ACCOUNTING & BOOK-KEEPING SERVICES  
FRIENDLY: RELIABLE: CONFIDENTIAL

- \* ACCOUNTS
- \* BOOKKEEPING
- \* VAT, PAYROLL
- \* SELF ASSESSMENT

- \* TROUBLESHOOTING
- \* BUDGETS
- \* SYSTEMS
- \* E-COMMERCE WEBSITES

- \* TRAINING
- \* PLANNING
- \* PRESENTATIONS
- \* COMPUTERISATION

GERRY OLSON BA. ACCOUNTANT 01795 890231

CAROLYTES

HAND PAINTED LAMPSHADES

any design possible.....

TREASURED FRAMES

RECOVERED

your fabric or ours.....

Please ring.....01795 534323..... any time!

HAIRDRESSING

in the comfort of your own home.

Please ring Pat on

01795 886302

answerphone available,

please leave your name and number.

FROM THE ORGAN SEAT

I was devastated to return from our short break and find that water had come onto the organ pipes and seriously damaged the organ. The organ can be played but has to be "nursed". The organ tuner has worked on the damage, several pipes have to dry out and so has the wood. The builder has removed debris from the guttering of the roof of the chapel in which the organ is housed and he cannot find where the water came in. Neither can Mr Shepherd, but come in it did!! The organ builder will be back in April and is hopeful he can restore it to its former glory as long as more rain has not found a way in!

Mark Cheesman gave an excellent address on "The Lord's Prayer" at the January Family Service. I thought of all the versions I have sung. I love them all, from the off beat ones to Charlotte Church's composed by Albert Hay Malotte. Of course I was delighted that Cliff Richard's Millennium Prayer version was "Top of the Pops" particularly at that time and I was thrilled with the arrangement I did for our Millennium Service at Ospringe. Perhaps we can repeat it at the Celebration to inaugurate the Pew Runners. I have been moved when I have listened to "Our Father" said by just one person. Thank you Mark for this food for thought.

God bless, Vicky Shepherd.



Housekeeper

to run a house for two busy professional people.

Full time or maximum part time.

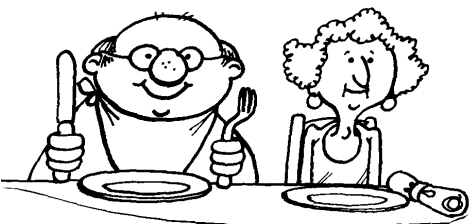
Terms negotiable, non resident, non smoker.

Own transport necessary.

Tel: 01622 859889

## Memorial Lilies at Easter

If anyone would like to contribute towards the Memorial Lilies on Easter Day in Ospringe or Eastling Church, would they contact the names below with their donation and the name/s they would like commemorated. It would be helpful if we know at least 10 days before Easter how much money we have to spend. If we can buy in good time, the price will be around £2 for each lily - in Holy Week the price goes up. A list of names will be displayed in each Church. Ospringe - Norma Curling, 01795 532630. Eastling - Pippa West, 01795 890273. Stalisfield - Vera Eckley, 01233 712944.



**The Lent Lunches**  
continue on Fridays 30th March  
and 6th April, 12 noon - 2pm in  
the Alexander Centre,  
Faversham.  
Open to everyone: soup and  
bread for a donation towards  
Christian Aid.

Churches Together in Faversham:

### Good Friday Service.

The annual combined open-air service is on Good Friday 13th April at 10.45 a.m. in Faversham Market Place. Music will be provided by the Faversham Gospel Mission Band. The 'Walk of Witness' prior to the service, carrying the large wooden cross down Preston Street, begins at 10.30 a.m. from the United Church at the top of Preston Street.

All Christians in the Faversham area are invited to attend. Please come and swell the numbers and remind Faversham what Good Friday is all about.

## Lent

### This Season of Grace

Scripture, Meditation and Prayer  
Monday 9th April  
9.30am at 9 Brogdale Road

### Our Journey into Mystery

Scripture, Meditation and Prayer  
Wednesdays 28th March, 4th and  
11th April  
11.30am in Eastling Church

### Evening Prayer

Book of Common Prayer  
Wednesdays 28th March, 4th and  
11th April  
3pm in Ospringe Church



Hand-painted ceramics are a tradition in Jaipur area of Rajasthan. Here we see a typical family workshop, with Lada Devi assisted by her daughter Minu. Nearby, her husband, Prabhudayal, is working at his potter's wheel.

The new Spring / Summer Catalogue is hot off the press. Lots of new cards, foods, clothes and gifts.

If you are interested in Fair Trade, Traidcraft goods are on sale at Ospringe family services, contact Jill Fagg(590507), and Eastling Newstyle, contact Hilary Harlow (890338). Phone either of us to borrow a catalogue and look through at your leisure.

## Christian Aid Week 13th - 19th May 2001

From the Archbishop

In 2001 Christian Aid Week will celebrate the contribution of churches and individuals across the UK and Ireland to the causes of fair trade and the cancellation of the unpayable debt of the world's poorest nations. Unpayable debt is not just about money - it is about human lives limited and lost through the lack of resources that you and I take for granted. The work of individuals and churches in this area makes such a difference to the lives of ordinary people in developing countries. Christian Aid week offers us a special chance to continue making such a difference.

**13th May Christian Aid Service  
(Churches Together) 6.30pm at  
United Church, Preston Street**



Over a quarter of a million people collect for Christian Aid week, which makes it the largest single organised act of witness by Christians in Britain and Ireland together. It shows that we actively care about those living in poverty. Christian Aid Sunday also offers us an opportunity to celebrate our vision of the Church's mission in the world. Jesus himself showed such special concern for the poor and the oppressed: "Blessed are you who are poor, for yours is the kingdom of God." Through the parable of the Good Samaritan, Jesus taught us that a true neighbour is one who takes care of another in need. Let us use Christian Aid week to demonstrate that we have taken these lessons to heart.

## EASTLING HORTICULTURAL SOCIETY

### ABOUT THE SHAKERS

There was quite a change from the usual gardening topics when, at their March meeting, members of Eastling Horticultural Society heard a talk on the American "Shakers" religious sect. Society member Mr Terrance Gilbert stepped in to provide the talk at short notice. He explained how the cult, best known for its furniture and quilts, started in Manchester, England. Initially the organisation flourished in America under the guidance of the charismatic Ann Lee, regarded by many of her followers as a reincarnation of Christ. However, the sect's imposition of strict celibacy on its members meant that it dwindled during the last century with only a few remaining adherents in the 1960s.

### APRIL MEETING

It's back to gardening for Eastling Horticultural Society's next meeting. On Thursday, 12 April, the topic will be "Alpines" with guest speaker Mr Ken Godden. The Meeting is in Eastling Village Hall, starting at 8pm. Admission is £1 for members of any local horticultural societies, and £3 for other visitors. For details of membership, call Mrs Helen Abell on 01795 890482.

### COMMITTEE

The Society's organising committee will meet on Wednesday, 4 April at 7.30pm at Forge House, The Street, by kind invitation of Mrs Janet Bryant.



Photo: Faversham News

### MILLENNIUM TREES

Splendid new trees to mark the New Millennium have been introduced at a number of locations around Eastling village. On Saturday, 24th February, three Silver Birches were planted at Moat Housing Society's Glebe Cottages and English Oaks in the Church car park and at the Village Hall.

Participants included the Reverend Penny Fenton, Moat Housing's area manager Mr Philip Cross, Parish Council chairman Mr Harold Wyld and Horticultural Society vice-chairman Mrs Janet Bryant. A number of villagers also turned out, despite the threat of snow flurries, to join in the proceedings. The trees were paid for by the Horticultural Society, additionally helped by a cash grant from Swale Borough Council. Each tree has a small plaque noting its planting in 2001.

### Y Course

Is there more to life than 'this'? Make your own mind up at THE 'Y' COURSE: a series of stimulating and enjoyable sessions where life's big issues are open to question.

### Why 'Y'?

A shape like the letter Y was used centuries ago to symbolise God. And The 'Y' Course recognises that life's great issues can't be faced on a human level alone.

### When?

Sunday evenings in June and July. Full details in next month's magazine.

### 'Growing in Pastoral Care'

It is hoped that this course will be run in the Benefice in May 2001. Diocesan training materials will be used during the four to five weekly sessions involved. Please let Penny (536366) know if you think you might be interested in taking part.

It is also possible that a further

Diocesan study package

### 'Joy in the Mourning'

will form the basis of a Benefice course starting in September.



### 8th April

Eastling Church, 10.30am

### Theme:

Does God heal today?

### Speaker:

Rev. Walter Robbins.

Come for complimentary  
Coffee and Croissants from 10am.

**Sunday  
Newstyle**

OSPRINGE PARISH COUNCIL

Since the last Parish Council meeting, the footway from the M2 bridge along to Lorenden will be repaired temporarily, and the potholes and general disrepair of a number of roads will all be attended to shortly by the Swale Highway Unit. Seeboard are attending to the resetting of timeclocks on a number of street lights, and have been given the go head to update a light fitting on the corner of Bayfield.

The next Parish Council meeting will be on Wednesday, 18th April commencing at 7pm in Whitehill Chapel, Painters Forstal. All members of the public are cordially invited to attend.

Future dates to note:-

The Annual Parish meeting will be held on Wednesday, 9th May in the Champion Hall, and the Annual Meeting on May 23rd in Whitehill Chapel, Painters Forstal, both commencing at 7.30pm.

VILLAGE DESIGN STATEMENT

There will be a public meeting on Tuesday 3rd April in the Champion Hall, Painters Forstal at 7.30pm to discuss the proposed Parish Design Statement. The document will describe the setting, landscape and visual character of the Parish together with its history and evolution. Please do make every effort to attend.

Jill Seaman, Clerk to the Council



EASTLING VILLAGE HALL TRUST

ANNUAL GENERAL MEETING MONDAY, 30th APRIL

The Annual General Meeting of Eastling Village Hall Trust will be held in the Hall at 8.00 p.m. on Monday, 30th April 2001. The meeting is open to all, and includes a public forum for questions and suggestions from villagers. This is your chance to raise that burning issue about the Hall that you have been mulling over. The meeting will also confirm the appointment of user group representatives and see the election of two village representatives to serve as Trustees. There is still time to submit a nomination for the elected members - further details and nomination forms are available from the Trust Secretary, Sue Parry, Magnolia Cottage, Newnham Lane, Eastling (tel: 890254).

PLEASE TURN UP AND SUPPORT THE TRUSTEES. The Village Hall is a great amenity to the local community and the Trustees would welcome your input.

EASTLING PARISH COUNCIL

PARISH APPRAISAL

All households in Eastling Parish should have received a copy of the new Eastling Parish Appraisal by the end of March. Based on information and views provided by local residents in December and January, the 28-page publication is a mine of information on what they do for work and leisure, where they live and what they feel is important locally.

Parish councillors have welcomed the report which they believe will be helpful in making decisions and representing the parish to official bodies including the county and borough councils. The cost of production and printing of the Appraisal was largely met by a rural community grant from Swale Borough Council.

CRIMESTOPPERS

Villagers attending the meeting were reminded of the Crimestoppers hotline which provides a means of passing information about criminal activity to the police anonymously. People calling the hotline number on 0800 555111 do not have to say who they are and will not be asked to become involved in subsequent police enquiries or any court action. The Crimestoppers organisers say that frequently these scraps of information prove helpful to the police in building up evidence that can lead to a successful prosecution.

REPORT ON MEETING HELD ON 12th MARCH 2001

LIGHTS AND DRAINS

Councillors agreed it was important to seek the views of tenants at Glebe Cottages on a villager's suggestion that the small estate's amber-coloured sodium street lamps would look better if changed to a whiter type of lighting. The Council will also be contacting Moat Housing Society and Kent Highways Unit to discuss the idea. Another request from an Eastling resident - to investigate the possibility of main drainage being provided in the village - was also discussed by parish councillors. Parish Council chairman Mr Harold Wyld reminded the meeting that plans to introduce main drainage had been drawn up on at least three occasions in the past 35 years. Each time, the schemes had been abandoned through lack of funding. Councillors agreed that, before considering whether to make any formal request, it would be sensible to contact Swale Borough Council and Southern Water to find out whether these organisations had any plans in mind.

ANNUAL PARISH MEETING

Eastling's Annual Parish Meeting is in Eastling Village Hall on Monday, 23rd April, starting at 7.30pm. Everyone is urged to attend to hear about the current work of the Parish Council and other local groups and organisations. The Meeting also provides a further opportunity for villagers to put forward ideas and matters of local concern. For further information, call the Parish Clerk, Mrs Sue Parry on 01795 890254.

FLOODING

Recent reoccurrence of deep flooding on the Otterden Road in the hollow between the Mill Lane junction and Wingfield Farm has prompted Eastling Parish Councillors to ask Swale Highways Unit to install permanent flood warning road signs. Councillors have also renewed demands to the Highways Unit for more effective action to prevent the regular flooding on the Eastling-Faversham Road, near the junction with North Eastling Lane. Believed to result from a combination of silted drainage gullies and land saturated by winter rainfall, the flooding has become a source of growing concern and frustration for residents and parish councillors.

No betrayal - no resurrection.

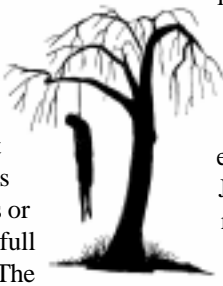
The paradox of Judas Iscariot

Although Judas is rarely mentioned in the Gospels without reference to the betrayal, it is unlikely that he was a thoroughgoing bad guy. He was after all called to be a disciple, so we must assume that he was genuinely committed at least at that stage. The disciples obviously trusted him as he held the common purse and they don't seem to have suspected him as the betrayer despite Jesus' increasingly heavy hints. His reputation was increasingly blackened as the scriptures were written. The earliest writer, Paul, only mentioned the word 'betrayed' once in all his writings ('who, on the same night that He was betrayed, took bread...' 1 Cor 11. 23), and even then the Greek could be translated as 'handed over' rather than 'betrayed'.

The next writer, Mark, seemed to view Judas more as an instrument of fate than an evil person. Only when Matthew came along was there any consideration of a motive (greed) and a large degree of predestiny was still accepted. Luke was the first to refer to Judas as a traitor and the first to talk of possession by Satan. Finally, John did a thorough hatchet job on Judas, telling us that he was a thief and also referring to Satanic possession. It is interesting that these are the only two references in the Bible to personal possession by Satan (rather than 'a devil').

Exaggerating Judas' malice is the easy way to explain his behaviour because one of the major difficulties about him is the enormity of his crime. How could one given so many gifts and privileges betray the Son of God for so small a price? Did he really know what he was doing? Was he predestined to this act to fulfil the prophecies about Jesus' death? What do we know about the historical Judas? He is believed to have come from Kerioth, a town in southern Judah (Iscariot = ish Kerioth). We are not told how he was called, but he was the only one of the Twelve who did not come from Galilee. Did this make him a misfit? Or was he perhaps the fifth column, the representative of the treacherous Jews in the resurrection story?

There are many theories as to Judas' motive. Greed is the obvious one, but thirty pieces of silver would only have been enough to live on for about six months - hardly worth betraying the Son of God for. Some say he was disillusioned when he realised that Jesus was not going to be a mighty military or political ruler. Others suggest that he wanted to force Jesus to use His powers to escape from His captors or that he wanted to incite the Jews to full blown rebellion in Jesus' defence. The Cainites, an early Gnostic sect, even believed that Judas was enlightened and



realised that Jesus needed to die in order to rise again and redeem us all! Whilst the last is implausible, we cannot now know which, if any, of the other motives was the true one, or whether it was, perhaps, a slow accumulation of several of them that tipped Judas over the edge.

And what of Jesus? He clearly knew Judas would betray Him, yet He did not try to stop him. In fact He continued to show him the same love and friendship as He did the other disciples. He even appears to have given Judas the place of honour at the Last Supper and in a final gesture of friendship (and a final appeal for a change of heart?), dipped bread in sauce and handed it to Judas. Could we give such love to someone we know will so utterly betray us? And although Judas had been watching for an opportunity to betray Jesus, in the end it was Jesus who gave it to him, saying, 'What you are about to do, do quickly'. Jesus was in control of the situation throughout.

One final thought. If Judas, undoubtedly overcome with remorse after Jesus was condemned, had sincerely repented to God rather than to the Chief Priests (Matthew 27. 3-5), would he have been forgiven?

And if we answer 'Yes', can we follow that example?

Mark Fagg.

April 2001 Diary Dates

1st	Eastling Church Council AGM	11am	Eastling Church
2nd	Coffee Morning	9.30 - 11.25am	Champion Hall
3rd	Village Design Meeting	7.30pm	Champion Hall
3rd	Stalisfield Church Council AGM	8pm	Stalisfield Church
4th	Evening Prayer	3pm	Ospringe Church
5th	Open Morning	9.30 - 11.25am	Eastling Village Hall
5th	Charing History Society	7.45pm	Charing Parish Hall
6th	Last Lent Lunch	12noon - 2pm	Alexander Centre
6th	8-12's Crafts	6.15pm	Champion Hall
7th	Easter Egg Hunt	10am	Ospringe School
7th	Coffee Morning & Egg Hunt	10.30am	Eastling Village Hall
7th	Stainer's Crucifixion	7pm	Faversham Parish Church
7th	Wine & Wisdom	7.30pm	Eastling Village Hall
8th	Sunday Newstyle	10.30am	Eastling Church
9th	Eastling NhW	8pm	Eastling Village Hall
10th	Study/discussion Group	8pm	Newhouse Farm, Eastling
11th	Evening Prayer	3pm	Ospringe Church
12th	Afternoon Club (Board Games)	2pm	Champion Hall
12th	Maundy Thursday Communion	8pm	Ospringe Church
12th	Horticultural Society	8pm	Eastling Village Hall
13th	Good Friday Open air service	10.45am	Market Place
13th	Teenagers' Youth Club	7.30pm	Champion Hall

16th	Youth Pilgrimage to Canterbury Cathedral for 12 noon.
17th	W.I. 2.15pm Champion Hall
18th	Otterden Parish Meeting 7.30pm Otterden Place
18th	Warren Street & Otterden NhW 8.15pm Otterden Place
18th	Ospringe Parish Council 7pm Champion Hall
20th	8-12's Games 6.15pm Champion Hall
23rd	Annual Parish Meeting 7.30pm Eastling Village Hall
26th	Afternoon Club (Bingo) 2pm Champion Hall
27th	Teenagers' Youth Club 7.30pm Champion Hall
28th	Mothers' Union 2pm Ospringe Church
30th	Eastling Hall Trust AGM 8pm Village Hall

Future Dates

4th May	Coffee Afternoon	2.30pm	Ospringe School
9th May	Annual Parish Meeting	7.30pm	Champion Hall
11th May	Annual Parish Meeting	7.30pm	Stalisfield Mem. Hall
12th May	Race Night		Ospringe School
13th May	Christian Aid Service	6.30pm	United Church, Preston St
23rd May	Annual Meeting	7.30pm	Champion Hall
9th June	Ospringe School Summer Fair		
17th June	Jazz	2pm - 6pm	Old Rectory, Stalisfield
17th June	Taizé Service (Churches Together)	6.30pm	at Ospringe.
30th June	Barn Dance		Painter's Farm

Services in our Benefice		Sharing Ministry in our Parishes	
<b>1st April 5th Sunday in Lent</b> Isaiah 43. 16 - 21, Philippians 3. 4b - 14, John 12. 1 - 8 Ospringe 8am Holy Communion (BCP) Eastling 9.50am Sunday School Eastling 10am Holy Communion (CW) + AGM Stalisfield 10am Holy Communion (CW) Ospringe 11am Morning Prayer (BCP) Whitehill Chapel 11am Sunday School + 9's-13's Whitehill Chapel 11am Covenant Service with Communion		Priest in Charge Reverend Penny Fenton (01795 536366) 9 Brogdale Road, Faversham. Curate Reverend Patricia Pollard (01795 535407) (N.S.M.) 7 Arthur Salmon Close, Faversham. Reader Mr Hugh Perks (01795 890603) Weald Cottage, Kettle Hill Road, Eastling Reader in Training Mr Norman Fowler (01795 890412) 4 Meesons Close, Eastling  Churchwardens Ospringe Mr N. Pollard. (01795 535407) Mr G. Shepherd Eastling Mrs H. Harlow (01795 890338) Mr N. Fowler (01795 890412) Stalisfield Mrs J. West (01795 890285) Mrs H. Galer (01795 890780)	
<b>Tuesday 3rd April</b> Whitehill Chapel 2.15pm Communion Service		<b>Contacting the Church's staff</b> For general enquiries and for specific enquiries about Baptisms and Weddings, please telephone Faversham 536366. If you would like the parish clergy to conduct a funeral, either in our churches or elsewhere, please ask the funeral director to make the necessary arrangements.  <b>FROM THE EDITOR</b> If you would like to submit articles, features or stories for publication, or would like any forthcoming events publicised, please send your magazine contribution by the 15th of the month preceding publication to the Editor, Mrs J. Fagg, Brownings Oast, Hansletts Lane, Faversham. ME13 0RS ( e-mail: jill.fagg@quista.net ) To advertise in this magazine contact Hilary Harlow on 01795 890338 ( e-mail: mharlow@talk21.com )	
<b>8th April Palm Sunday</b> Philippians 2. 5 - 11, Luke 19. 28 - 40 Eastling 8am Holy Communion (BCP) Stalisfield 10am Morning Prayer (BCP) Eastling 10.30am Sunday Newstyle Ospringe 11am Holy Communion (CW) Ospringe 11am Sunday School		<b>From the Registers</b>  <b>Funerals</b>  26th February 2001 at Charing John Norman EDWARDS  5th March 2001 Burial at Love Lane Rosemund Elizabeth Ann SMITH  8th March 2001 Funeral at Ospringe and Cremation at Charing Ronald 'Ron' GATES	
<b>12th April Maundy Thursday</b> Ospringe 8pm Holy Communion		<b>I Do Not Go Alone</b> If <i>death</i> should beckon me with outstretched hand And whisper softly of " <i>an unknown land</i> "... I shall not be afraid to go, For though the path I do not know... I take <i>Death's hand</i> without a fear, For he who safely brought me here... Will also take me safely back, And though in many things I lack... He will not let me go alone Into the " <i>valley that's unknown</i> "... So I reach out and take <i>Death's hand</i> And journey to the " <i>Promised Land</i> "! Helen Steiner Rice	
<b>13th April Good Friday</b> Stalisfield 10am Devotional Service Ospringe 12 noon Devotional Service Eastling 2pm Devotional Service			
<b>15th April Easter Day</b> Acts 10. 34-43, 1 Corinthians 15. 19 - 26, John 20. 1 - 18 Ospringe 8am Holy Communion (BCP) Stalisfield 10am Holy Communion (CW) Eastling 10am Holy Communion (CW) Ospringe 11am Holy Communion (CW)			
<b>22nd April Easter 2</b> Acts 5 . 27 - 32, Revelation 1. 4 - 8, John 20.. 19 - 31. Stalisfield 8am Holy Communion (BCP) Eastling 10am Family Service + Baptism Ospringe 11am Family Service + Baptism Whitehill Chapel 11am People's Choice			
<b>29th April Easter 3</b> Acts 9. 1 - 6, Revelation 5. 11 - 14, John 21. 1 - 19 Eastling 10.30am Holy Communion (CW)			
<b>6th May Easter 4</b> Acts 9. 36 - end, John 10. 22 - 30 Ospringe 8am Holy Communion (BCP) Eastling 10am Holy Communion (CW) Ospringe 11am Morning Prayer (BCP) Whitehill Chapel 10.40am Sunday School + 9's-13's Whitehill Chapel 11am Family Service Otterden 3pm Evening Prayer (Due to Foot & Mouth Outbreak venue may change)			

NEIGHBOURHOOD

STALISFIELD

A meeting of the Neighbourhood Watch Link people was held at The Old Vicarage on Tuesday, 27th February, 2001.

It was felt that the new Ringmaster 2000 system was working well, it had overcome the teething problems and, although more information is received than we need, it is better to have too much than too little. Link people must distribute, to their neighbours, all information as soon as it is received and it is vital that email is checked daily. It would be advisable for Link people who are going away, for any reason, for more than two days, to advise the Co-ordinator of their absence, so that measures to ensure really important information is relayed to their immediate neighbours in their absence.

Sarah Lewis suggested that the contact list of link people should be given to every link person, so that should it be necessary, it would be possible to contact one another.

Dick Moger had an attempted theft of garden furniture recently and as a result his near neighbours felt that it would be beneficial for them to join the Stalisfield NHW. Jean West said that was fine, but it may be better for them to join the Harthill Watch, since that is their actual Neighbourhood Watch area, she undertook to get contact details of the Hart Hill group for Dick. Stalisfield is close to the point where three police districts join,

we get information from Swale and with the assistance of Graham Galer (Otterden NHW) from Maidstone but nothing from Ashford. Dick Moger undertook to try to remedy this.

It was suggested that perhaps we get the police to our next meeting and that meetings should be held annually, unless there was need for an extraordinary meeting.

Jean West indicated her wish to stand down as Co-ordinator and Cat Horn volunteered to take over the task. This was gratefully accepted. Jean was thanked for her hard work in setting up the scheme in Stalisfield.

It was agreed that there was a danger of relaxing our guard and becoming complacent since there had been very little crime in our area recently but that we need to be aware that the police are not going to patrol rural areas and that we all need to be vigilant, and look after one another. Particularly since there appeared to be trend for many criminals to operate out of towns and in the country.

The importance of installing shed alarms was stressed - available from Sue Keats on (01227) 750831 at a cost of £6. Recent crime reports had indicated that theft from outbuildings was prevalent. Indeed those who were able to do so would be well advised to install house alarms also.

WATCH

EASTLING

**VITAL "WATCH" MEETING**

As a follow-up to the get-together for Eastling Neighbourhood Watch link persons held at the end of February, two of the local links, Stephen Edmed (who looks after Meesons Close) and Chon Wilson (who covers The Street), have suggested a Meeting to decide how to make the Eastling Watch more effective. With a spate of break-ins and burglaries in neighbouring parishes and a theft of equipment from buildings at North Court, Eastling in mid March, the need for an active Watch scheme in Eastling has never been greater. The Meeting is on Monday, 9th April at 8pm in Eastling Village Hall. All local Link Persons are invited and, as well as serious discussion, the idea is to make it a sociable occasion. So participants are urged to bring something to drink with a few "nibbles" - an idea everyone enjoyed at the February meeting. For more information or to say you are coming, call Mrs Sue Parry on 01795 890254.

**FOOT-AND-MOUTH**

Anyone wishing to see authoritative information on the current foot-and-mouth outbreak, could find the hot-link to the Ministry of Agriculture, Fisheries and Food website on the local Eastling Village and Otterden Online Internet websites a great time saver. The two local sites also include links to other sources of news and advice, such as Kent County Council and the National Farmers Union. Click on <http://go.to/eastling> and <http://go.to/otterden>.

Postage Stamps and old coins.

A big thank you to everyone who collected and gave their used stamps and spare coins to the Mid - Africa Ministry.

Everyone can help by saving used stamps from their mail and placing them in the green box at the back of Eastling Church. Any old coins or foreign currency you no longer need, pictorial phone cards and post cards are also of use. All these items are sorted, sold to collectors and enthusiasts.

For more information about Mid - Africa Ministry and the work they do check out their web site [www.midafricaministry.org](http://www.midafricaministry.org).

STALISFIELD

The Annual Parish Meeting for Stalisfield will be held on **Friday 11th May at 7.30pm** in Stalisfield Memorial Hall.

This meeting will be followed by the **A.G.M. of the Parish Council.**

All Stalisfield residents are invited to come and support the parish council.

Otterden Parish Meeting

**Wednesday 18th April, 7.30pm**

**Otterden Place**

**WARREN STREET and OTTERDEN**

**NEIGHBOURHOOD WATCH**

We will be holding our next regular 6-monthly NhW meeting on Wednesday April 18th at Otterden Place.

The meeting will begin immediately after the end of the Otterden Parish Council AGM, i.e. at approximately 8.15 pm.

Anyone interested is welcome to attend.

**Don't Forget  
The Coffee Morning  
Eastling Village Hall  
Saturday 7th April  
10.30am  
In aid of CLIC**

(Cancer and Leukaemia in Children).  
Easter Egg Hunt for the under  
5's, Cake Stall,  
Children's clothes and Books  
(nice not jumble), Raffle,  
Decorated Egg and  
Easter Bonnet  
competitions,  
plants, flowers and  
pretty cards.  
Please come and have  
some fun while helping to raise  
money for this children's charity.  
For further information (and  
offers of help!) please ring Sarah  
Palmer on 01795 890232.



**EASTLING & PAINTERS  
FORSTAL PLAYGROUP**

Don't forget the COFFEE MORNING to be held on Monday 2nd April at Painters Forstal between 9.30 and 11.25am. You're bound to enjoy the Easter Biscuits and Chocolate Nests which will be on sale, and we look forward to welcoming all parents, relatives, friends and younger children for the morning  
A reminder that the COFFEE MORNING and EASTER EGG HUNT will be held in Eastling Village Hall on Thursday, 5th April 9.30am-11.25am, when all parents, grandparents, friends and, of course, younger children are welcome. Entrance for non-Playgroup children will be £1.00 and includes a drink and biscuit. This will be your last opportunity to buy your EASTER RAFFLE tickets at 50p for 5 on sale now. The last day of Spring Term will be on Friday 6th April and Summer Term will commence on Monday 23rd April. Any enquiries to Jill Seaman, 01795 890519



**Afternoon Club**

*Arrangements are being made for our first half-day outing (Wednesday May 23rd). There are still a few seats left at £7 per head. Please contact me at the number below.*

*Activities for April:*

*12th Board Games*

*26th Bingo*

*Rodney (tel: 536424)*

**OSPRINGE CHURCH  
200 Club**

You contribute £1 a month for at least one year and you could win a prize in our monthly draw. Contact Carol or Stuart Marshall on 537873 for more details. The winning numbers for the March draw were:  
1st - 46, 2nd - 17, 3rd -13.

**Friends of Eastling School**

We had an extremely well attended Jumble Sale and raised a record £219 to go into our funds for the School. Thanks to everyone who supported it either by donating jumble or attending. We are still collecting all the tokens we can, Tesco's 'Computers for Schools' or tokens from cereal boxes, crisp packets or any others that would benefit our School. Please drop them into the School office during the week or give them to a pupil or parent. The Easter holidays commence on Friday 6th April and we're back to school on Monday 23rd April. Have a very Happy Easter and we look forward to telling you about our exciting events in the summer term.  
Celia Hamilton-Jones and Hanneke Kosterink

Wine and Wisdom  
Saturday 7th April,  
7.30pm,  
Eastling Village Hall  
Your last chance to book a table of six at £4.00 per person, food and wine included.  
Ring me, Norman,  
on 890242.



**Painter's Forstal  
Gardeners' Club**

The next meeting is not until 14th May, which will be a demonstration of Hanging Baskets in the Champion Hall, Painter's Forstal. Further details from Fav. 533608.

**Painter's Forstal  
Village Amenities**

Thank you to all who came to the AGM and took part in the Quiz. The trophy was won by the W.I. Team. We are very grateful to Mr D Green for organising the quiz.

**Charing and District Local  
History Society**

On Thursday 5th April, Sarah Pearson will tell the story of a local landmark  
THE ARCHBISHOP'S PALACE at CHARING.  
The presentation will be given in the Parish Hall, Charing, at 8pm. Everyone will be welcomed at 7.45pm when the doors open. Non-members pay £1. Please note the earlier date of this lecture.

**Having a Party?  
Planning a Wedding?  
Venue for your Club .....**  
Hall and smaller rooms available with kitchen facilities at  
**Eastling Village Hall.**

For more information please contact Mary Eagleton on 890436.

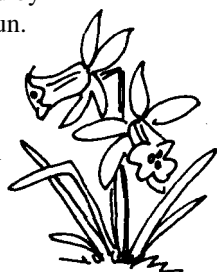
**Painter's Forstal and  
Ospringe Women's Institute**

Tuesday April 17th, 2.15 pm,  
Champion Hall, Painter's Forstal  
Talk: Local Gardens by Mrs E Thomas  
Competition: Garden flowers arranged in a tumbler.  
Prospective members are invited to attend two monthly meetings without commitment.

**MOTHERS' UNION  
NEWS**

At the February meeting Pat gave us a wonderful talk about her holiday in Malaysia. She brought souvenirs and photos for us to see and explained the culture and sights they visited. The meeting ended with the Ash Wednesday service. The 'business' side of the meeting included thanks to all members of the Mothers' Union for raising £131.00 towards Demelza House. It was also noted that Janet McDonald (Action and Outreach) will run from Grove Ferry to Whitstable (20 miles) sponsored by the Mothers' Union for the Lady Day Run. Easter cards and gifts can be ordered from the Mothers' Union by contacting Pat - Tel. 531811  
The next meeting will be on 28th March at 2.00 pm. at Church. Anyone wishing to come along to our meetings - please contact Pat on 531811.

Carol



**Watch this Space.....**

**Jazz  
in the  
Old Vicarage Garden  
Stalisfield  
on  
Sunday 17th  
June 2001  
2pm to 6pm**



**Barn Dance**

(Arranged by the Village Amenities Committee)  
June 30th 2001 at  
The Barn, Painter's Farm  
(by kind permission of Doris Knowler)  
Tickets £5.00  
Bring your own refreshments  
Ring 532756 or 537530 to book.

**Celebration**

of 20 years of  
Accredited Lay Assistants in the  
Diocese of Canterbury  
**Saturday 5th May  
11.00am**

**St. Mary Bredin, Canterbury**  
Preacher - The Ven. John Pritchard,  
Archdeacon of Canterbury  
Musical Accompaniment - *River*  
Anyone who has been involved in, or has an interest in, the Healing Ministry of the Diocese is warmly invited to attend.  
Further details from 01303 230762

**Ospringe School Association**

The coffee afternoon on 9th March was the best yet. The hall was buzzing for an hour and a half and there was a great deal of interest in the new school uniform supplies. Just for the record, the uniform has not changed but the change of suppliers has allowed the school to slightly update the logo.

There will be another coffee afternoon (with the opportunity to order / purchase uniform) on Friday May 4th at 2.30pm.

The year 6 children are now preparing for the first ever Ospringe school residential trip to Swattenden near Cranbrook? They will be returning just in time to participate in the

**Easter Egg Hunt on April 7th,** although I am sure some of the teachers will be hoping for a lie-in, the Hunt starts at 10.00am. There will be written clues for the

older children, and picture clues for the younger ones. Refreshments will be available. After the holidays it will be all systems go for the **Race Night on Saturday May 12th.** Tickets and horses are already on sale, and last year the event was a sell out - so get your tickets early this time. For further details contact the school on 532004. Finally the **Summer Fair** is on **Saturday 9th June from 11am to 2pm.** We hope that the earlier date will avoid other summer events, and that the weather will be good! As this year is the schools 150th anniversary the theme will be 'Victorian' and stall holders will be expected to dress suitably! If anyone has any traditional games they could lend us please contact the school.

Jill Fagg